

N A S H V I L L E
P L A N N I N G

February 1, 2024

To: Stephanie James Metro Water Services

Re: **Cortner Subdivision**
Planning Commission Mandatory Referral 2024M-025ES-001

On behalf of the Metropolitan Planning Commission, the following item, referred to the Commission as required by the Metro Charter, has been recommended for *approval* to the Metropolitan Council:

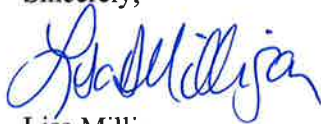
A request for the acceptance of approximately 36 linear feet of eight-inch sanitary sewer main (PVC), one sanitary sewer manhole and any associated easements to serve the Cortner Subdivision development.

The relevant Metro agencies (Metro Parks, Metro Public Works, Metro Water Services, Metro Emergency Communications, the Nashville Electric Service, Metro Finance – Public Property and the Metro Historical Commission) have reviewed the proposal and concur in the recommendation for approval. This request must be approved by the Metro Council to become effective. A sketch showing the location of the request is attached to this letter.

Conditions that apply to this approval: none

This recommendation for approval is given as set forth in the Metropolitan Planning Commission Rules and Procedures. If you have any questions about this matter, please contact Delilah Rhodes at Delilah.Rhodes@nashville.gov or 615-862-7208

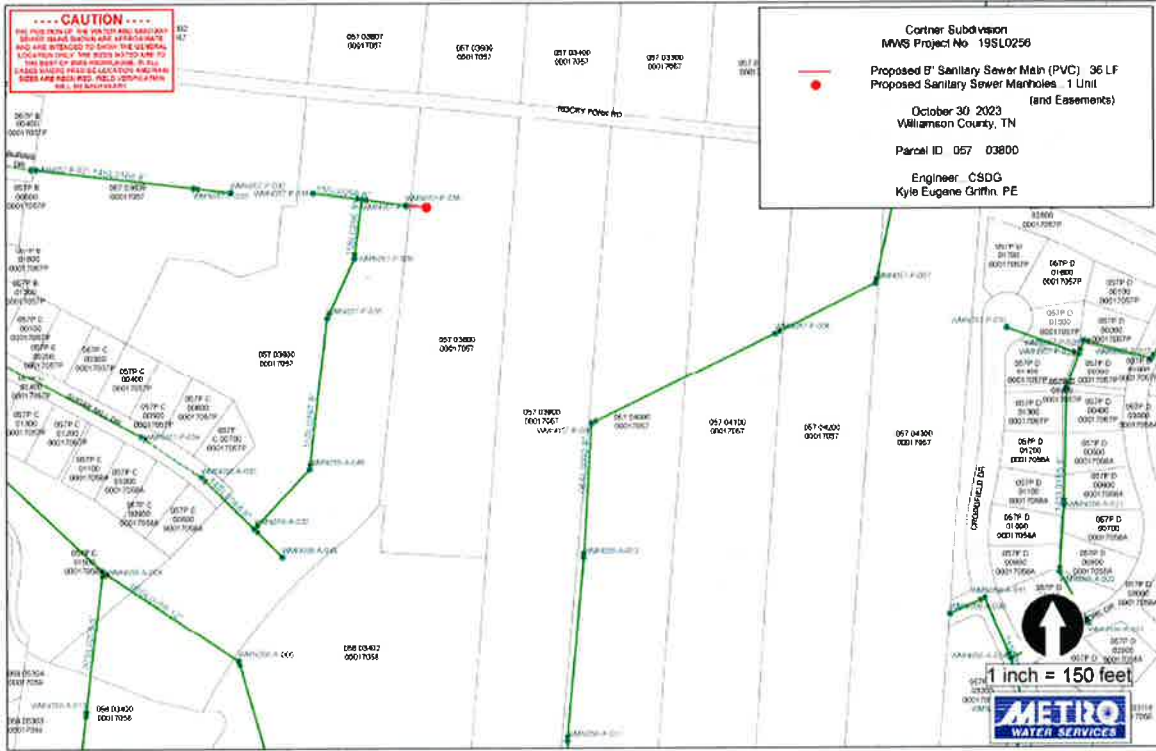
Sincerely,



Lisa Milligan
Assistant Director Land Development
Metro Planning Department
cc: *Metro Clerk*

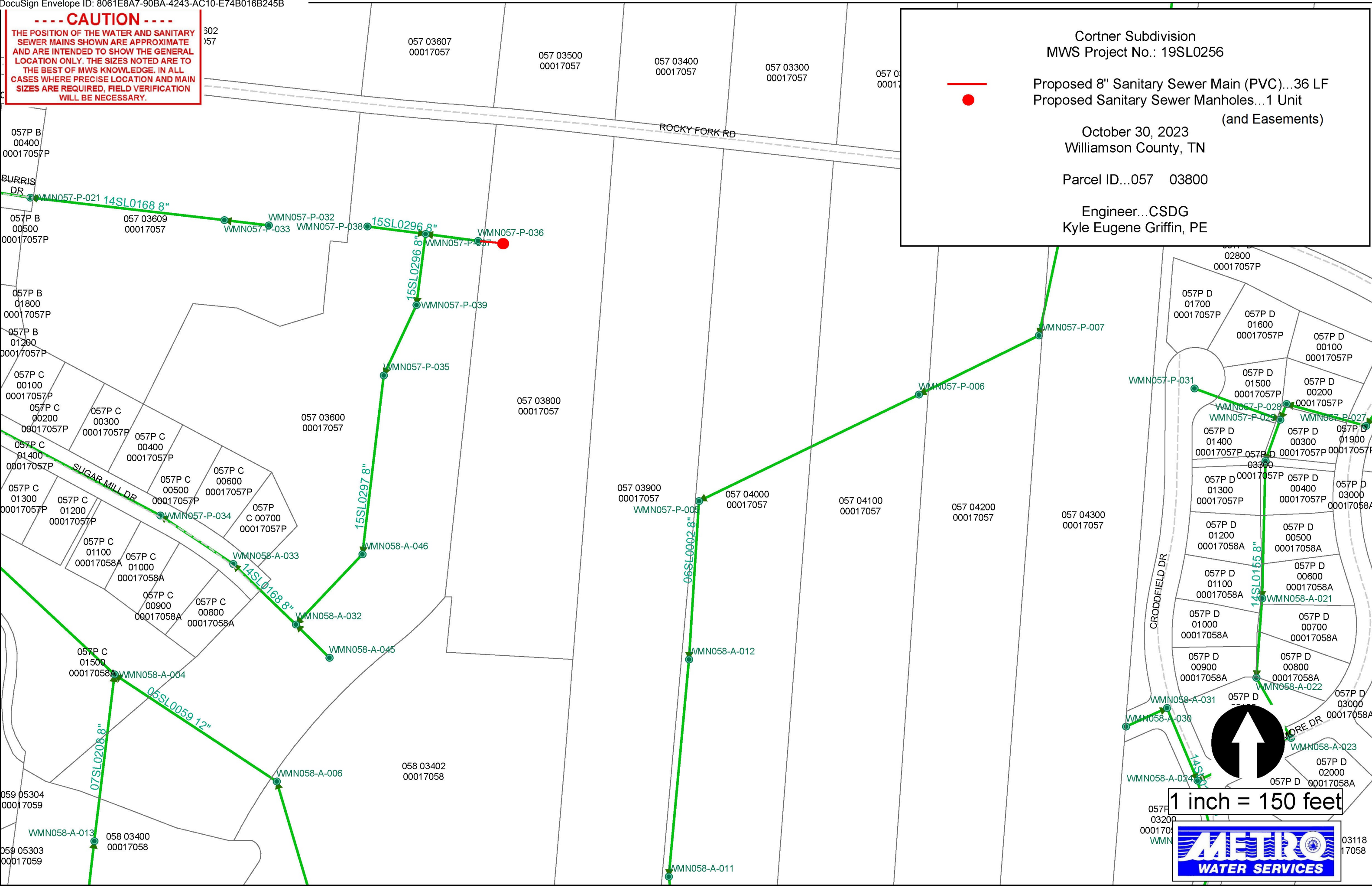
**Re: Cortner Subdivision
Planning Commission Mandatory Referral 2024M-025ES-001**

A request for the acceptance of approximately 36 linear feet of eight-inch sanitary sewer main (PVC), one sanitary sewer manhole and any associated easements to serve the Cortner Subdivision development.



----- CAUTION -----

THE POSITION OF THE WATER AND SANITARY SEWER MAINS SHOWN ARE APPROXIMATE AND ARE INTENDED TO SHOW THE GENERAL LOCATION ONLY. THE SIZES NOTED ARE TO THE BEST OF MWS KNOWLEDGE. IN ALL CASES WHERE PRECISE LOCATION AND MAIN SIZES ARE REQUIRED, FIELD VERIFICATION WILL BE NECESSARY.

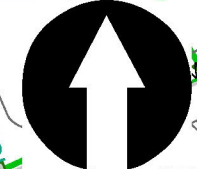
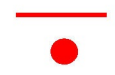


Cortner Subdivision
MWS Project No.: 19SL0256
Proposed 8" Sanitary Sewer Main (PVC)...36 LF
Proposed Sanitary Sewer Manholes...1 Unit
(and Easements)

October 30, 2023
Williamson County, TN

Parcel ID...057 03800

Engineer...CSDG
Kyle Eugene Griffin, PE



1 inch = 150 feet



057P B
00400
00017057P

057P B
00500
00017057P

057P B
01800
00017057P

057P B
01200
00017057P

057P C
00100
00017057P

057P C
00200
00017057P

057P C
01400
00017057P

057P C
01300
00017057P

057P C
01100
00017058A

057P C
01000
00017058A

057P C
00900
00017058A

057P C
01500
00017058A

059 05304
00017059

059 05303
00017059

057 03607
00017057

057 03500
00017057

057 03400
00017057

057 03300
00017057

057 03200
00017057

057 03600
00017057

057 03800
00017057

057 03900
00017057

057 04000
00017057

057 04100
00017057

057 04200
00017057

057 04300
00017057

058 03402
00017058

07SL0208 8"

05SL0059 12"

15SL0297 8"

15SL0296 8"

15SL0296 8"

14SL0168 8"

06SL0002 8"

14SL0155 8"

WMN058-A-024

WMN058-A-030

WMN058-A-031

WMN058-A-022

WMN058-A-021

WMN057-P-028

WMN057-P-029

WMN057-P-031

WMN057-P-006

WMN057-P-007

WMN057-P-037

WMN057-P-038

WMN057-P-032

WMN057-P-033

WMN057-P-039

WMN057-P-035

WMN057-P-034

WMN058-A-033

WMN058-A-032

WMN058-A-045

WMN058-A-046

WMN058-A-012

WMN058-A-011

WMN058-A-023

WMN058-A-021

WMN058-A-022

WMN058-A-021

WMN058-A-021

WMN058-A-021

WMN058-A-021

WMN058-A-021

WMN058-A-021

WMN058-A-021

WMN058-A-021

WMN058-A-021

WMN058-A-021

WMN058-A-021