

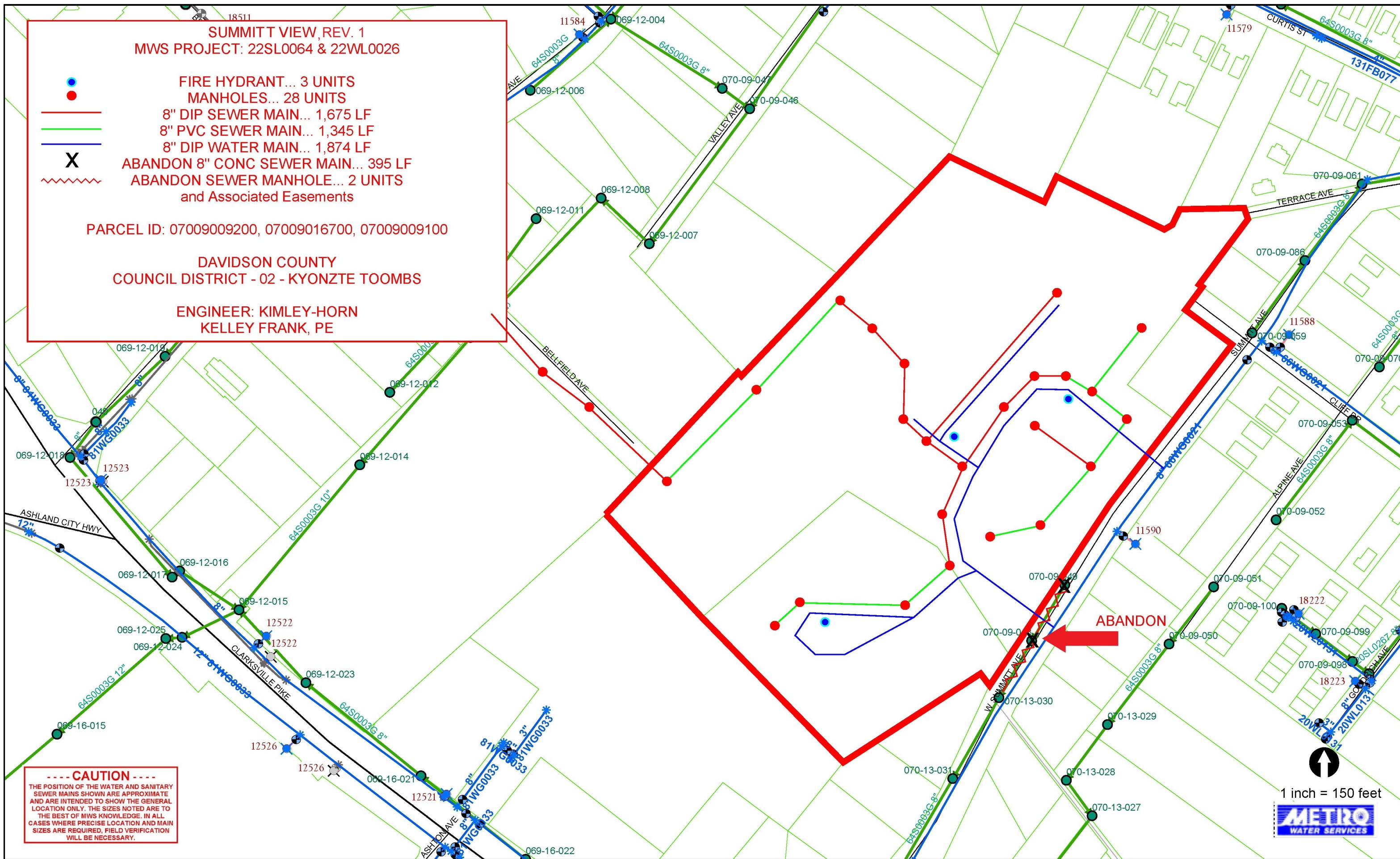
**SUMMITT VIEW, REV. 1**  
**MWS PROJECT: 22SL0064 & 22WL0026**

**FIRE HYDRANT... 3 UNITS**  
**MANHOLES... 28 UNITS**  
**8" DIP SEWER MAIN... 1,675 LF**  
**8" PVC SEWER MAIN... 1,345 LF**  
**8" DIP WATER MAIN... 1,874 LF**  
**ABANDON 8" CONC SEWER MAIN... 395 LF**  
**ABANDON SEWER MANHOLE... 2 UNITS**  
**and Associated Easements**

**PARCEL ID: 07009009200, 07009016700, 07009009100**

**DAVIDSON COUNTY**  
**COUNCIL DISTRICT - 02 - KYONZTE TOOMBS**

**ENGINEER: KIMLEY-HORN**  
**KELLEY FRANK, PE**



**----- CAUTION -----**  
 THE POSITION OF THE WATER AND SANITARY SEWER MAINS SHOWN ARE APPROXIMATE AND ARE INTENDED TO SHOW THE GENERAL LOCATION ONLY. THE SIZES NOTED ARE TO THE BEST OF MWS KNOWLEDGE. IN ALL CASES WHERE PRECISE LOCATION AND MAIN SIZES ARE REQUIRED, FIELD VERIFICATION WILL BE NECESSARY.







September 10, 2024

To: Mike Atchison Metro Water Services

**Re: Summitt View (Rev. 1)  
Planning Commission Mandatory Referral 2023M-181ES-002  
Council District #02 Kyonzté Toombs, Council Member**

On behalf of the Metropolitan Planning Commission, the following item, referred to the Commission as required by the Metro Charter, has been recommended for *approval* to the Metropolitan Council:

*A request to amend Council ordinance BL2024-171 and Proposal No. 2023M-181ES-001 to include the abandonment of certain sanitary sewer mains and sewer manholes. Specific infrastructure instead now will be the abandonment of approximately 395 linear feet of eight-inch concrete sanitary sewer mains and two sanitary sewer manholes and the acceptance of approximately 1,874 linear feet of eight-inch water mains (DIP), three fire hydrant assemblies, 1,675 linear feet of eight-inch sewer mains (DIP), 1,345 linear feet of eight-inch sewer mains (PVC), 28 sanitary sewer manholes, and associated easements to serve the Summitt View, Revision 1 development.*

The relevant Metro agencies (Metro Parks, Nashville Department of Transportation, Metro Water Services, Metro Emergency Communications, the Nashville Electric Service, Metro Finance – Public Property and the Metro Historical Commission) have reviewed the proposal and concur in the recommendation for approval. This request must be approved by the Metro Council to become effective. A sketch showing the location of the request is attached to this letter.

**Conditions that apply to this approval: none**

This recommendation for approval is given as set forth in the Metropolitan Planning Commission Rules and Procedures. If you have any questions about this matter, please contact Delilah Rhodes at [Christopher.Paulsen@nashville.gov](mailto:Christopher.Paulsen@nashville.gov) or 615-880-2452

Sincerely,

A handwritten signature in blue ink that reads "Lisa Milligan".

Lisa Milligan  
Assistant Director Land Development  
Metro Planning Department  
cc: *Metro Clerk*

**Re: Summitt View (Rev. 1)  
Planning Commission Mandatory Referral 2023M-181ES-002  
Council District #02 Kyonzté Toombs, Council Member**

*A request to amend Council ordinance BL2024-171 and Proposal No. 2023M-181ES-001 to include the abandonment of certain sanitary sewer mains and sewer manholes. Specific infrastructure instead now will be the abandonment of approximately 395 linear feet of eight-inch concrete sanitary sewer mains and two sanitary sewer manholes and the acceptance of approximately 1,874 linear feet of eight-inch water mains (DIP), three fire hydrant assemblies, 1,675 linear feet of eight-inch sewer mains (DIP), 1,345 linear feet of eight-inch sewer mains (PVC), 28 sanitary sewer manholes, and associated easements to serve the Summitt View, Revision 1 development.*

