

Harding Place Hotel
MWS Project Nos.: 20SL0187 & 19WL0112

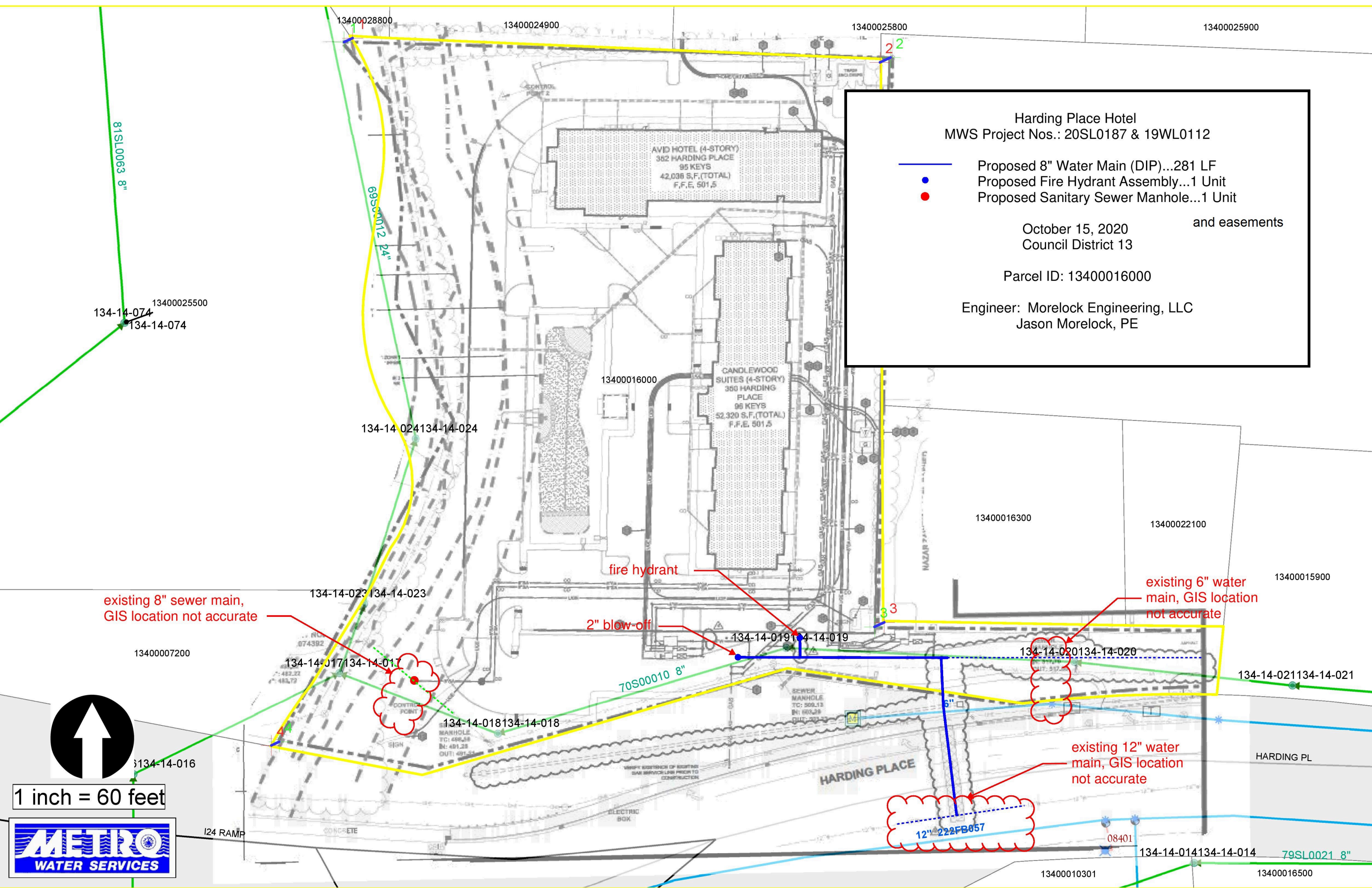
- Proposed 8" Water Main (DIP)...281 LF
- Proposed Fire Hydrant Assembly...1 Unit
- Proposed Sanitary Sewer Manhole...1 Unit

and easements

October 15, 2020
Council District 13

Parcel ID: 13400016000

Engineer: Morelock Engineering, LLC
Jason Morelock, PE

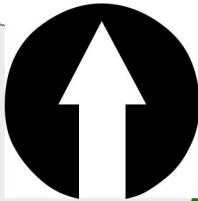


1 inch = 60 feet



AVID HOTEL (4-STORY)
362 HARDING PLACE
95 KEYS
42,038 S.F.(TOTAL)
F.F.E. 501.5

CANDLEWOOD SUITES (4-STORY)
360 HARDING PLACE
95 KEYS
52,320 S.F.(TOTAL)
F.F.E. 501.5



I24 RAMP

HARDING PLACE

HARDING PL

12" 222FB057

existing 8" sewer main,
GIS location not accurate

existing 6" water
main, GIS location
not accurate

existing 12" water
main, GIS location
not accurate

fire hydrant

2" blow-off

70S00010 8"

81SL0063 8"

69S00012 24"

79SL0021 8"

134-14-074
134-14-074

134-14-024
134-14-024

134-14-023
134-14-023

134-14-017
134-14-017

134-14-018
134-14-018

134-14-019
134-14-019

134-14-020
134-14-020

134-14-021
134-14-021

13400007200

13400025500

13400028800

13400024900

13400025800

13400025900

13400016000

13400016300

13400022100

13400015900

13400010301

134-14-014
134-14-014

13400016500