

Padel Haus  
MWS Project No.: 24SL0289

Abandon 8" Sanitary Sewer Main (UK)...223 LF  
and Associated Easements  
Abandon Sanitary Sewer Manholes...2 Units  
and Associated Easements

February 11, 2025  
Council District 16

Parcel IDs...11909010300

Engineer...TTL  
Randy G. Laine, PE

Abandon Approximately 223 LF of 8-Inch  
Sanitary Sewer (UK)

----- CAUTION -----  
THE POSITION OF THE WATER AND SANITARY  
SEWER MAINS SHOWN ARE APPROXIMATE  
AND ARE INTENDED TO SHOW THE GENERAL  
LOCATION ONLY. THE SIZES NOTED ARE TO  
THE BEST OF MWS KNOWLEDGE. IN ALL  
CASES WHERE PRECISE LOCATION AND MAIN  
SIZES ARE REQUIRED, FIELD VERIFICATION  
WILL BE NECESSARY.



1 inch = 50 feet





February 28, 2025

To: Donnie Stevanus Metro Water Services

Re: **Padel Haus**  
**Planning Commission Mandatory Referral 2025M-021ES-001**  
**Council District # 16 Ginny Welsch, Council Member**

On behalf of the Metropolitan Planning Commission, the following item, referred to the Commission as required by the Metro Charter, has been recommended for *approval* to the Metropolitan Council:

*A request for the abandonment of approximately 223 linear feet of eight-inch sanitary sewer and two sanitary sewer manholes, and any associated easements, to serve the Padel Haus development.*

The relevant Metro agencies (Metro Parks, Nashville Department of Transportation, Metro Water Services, Metro Emergency Communications, the Nashville Electric Service, General Services – Public Property and the Metro Historical Commission) have reviewed the proposal and concur in the recommendation for approval. This request must be approved by the Metro Council to become effective. A sketch showing the location of the request is attached to this letter.

**Conditions that apply to this approval: none**

This recommendation for approval is given as set forth in the Metropolitan Planning Commission Rules and Procedures. If you have any questions about this matter, please contact Delilah Rhodes at [Delilah.Rhodes@nashville.gov](mailto:Delilah.Rhodes@nashville.gov) or 615-862-7208

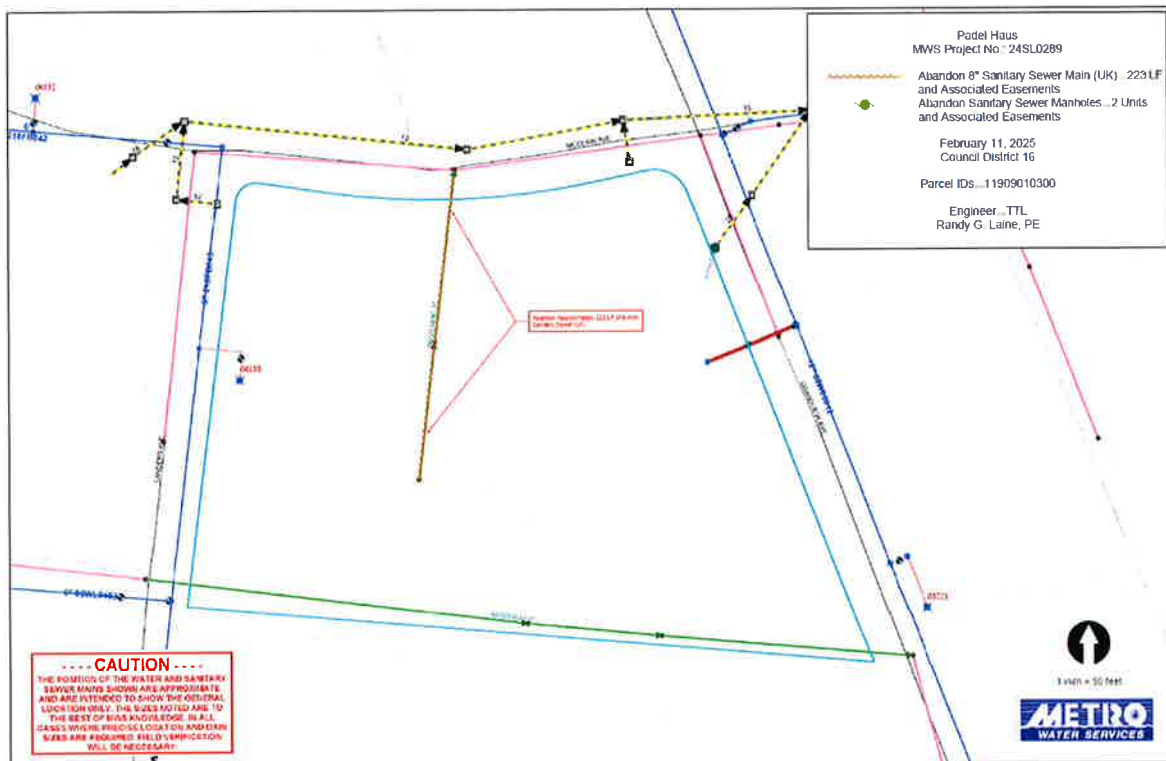
Sincerely,

A handwritten signature in blue ink that reads "Lisa Milligan".

Lisa Milligan  
Assistant Director Land Development  
Metro Planning Department  
cc: *Metro Clerk*

**Re: Padel Haus**  
**Planning Commission Mandatory Referral 2025M-021ES-001**  
**Council District # 16 Ginny Welsch, Council Member**

*A request for the abandonment of approximately 223 linear feet of eight-inch sanitary sewer and two sanitary sewer manholes, and any associated easements, to serve the Padel Haus development.*



ORIGINAL

METROPOLITAN COUNTY COUNCIL

Bill No. \_\_\_\_\_

An ordinance authorizing The Metropolitan Government of Nashville and Davidson County to abandon existing public sanitary sewer main, sanitary sewer manholes and easements, for property located at 2807 Grandview Avenue, also known as Padel Haus, (MWS Project No. 24-SL-289 and Proposal No. 2025M-021ES-001).

Introduced \_\_\_\_\_

Passed First Reading \_\_\_\_\_

Amended \_\_\_\_\_

Passed Second Reading \_\_\_\_\_

Passed Third Reading \_\_\_\_\_

Approved \_\_\_\_\_

By \_\_\_\_\_  
Metropolitan Mayor

Advertised \_\_\_\_\_

Effective Date \_\_\_\_\_