



February 1, 2024

To: Mike Atchison Metro Water Services

Re: **Belle Arbor Phase 7**
Planning Commission Mandatory Referral 2024M-015ES-001
Council District #03 Jennifer Gamble, Council Member

On behalf of the Metropolitan Planning Commission, the following item, referred to the Commission as required by the Metro Charter, has been recommended for *approval* to the Metropolitan Council:

A request for the acceptance approximately 231 linear feet of six-inch water main (DIP), approximately 593 linear feet of eight-inch water main (DIP), two fire hydrant assemblies, approximately 396 linear feet of eight-inch sanitary sewer main (PVC), one sanitary sewer manhole, and associated easements to serve the Belle Arbor Phase 7 development.

The relevant Metro agencies (Metro Parks, Metro Public Works, Metro Water Services, Metro Emergency Communications, the Nashville Electric Service, Metro Finance – Public Property and the Metro Historical Commission) have reviewed the proposal and concur in the recommendation for approval. This request must be approved by the Metro Council to become effective. A sketch showing the location of the request is attached to this letter.

Conditions that apply to this approval: none

This recommendation for approval is given as set forth in the Metropolitan Planning Commission Rules and Procedures. If you have any questions about this matter, please contact Delilah Rhodes at Delilah.Rhodes@nashville.gov or 615-862-7208

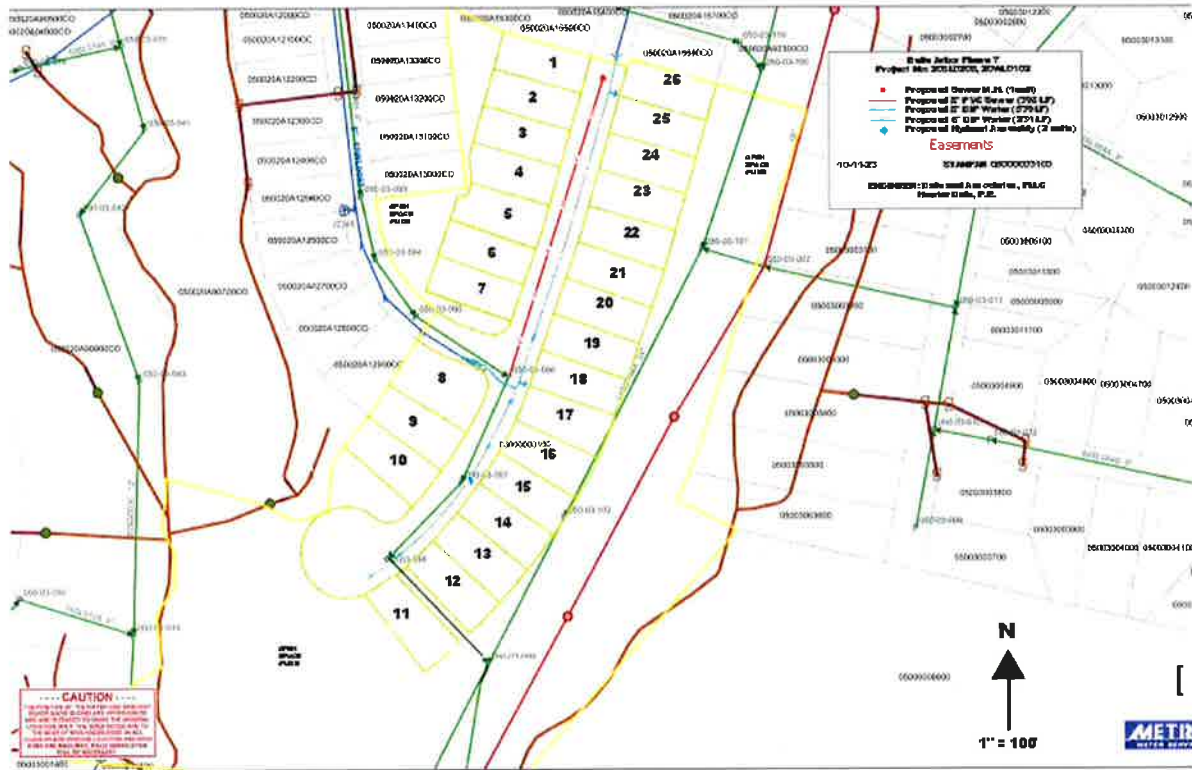
Sincerely,

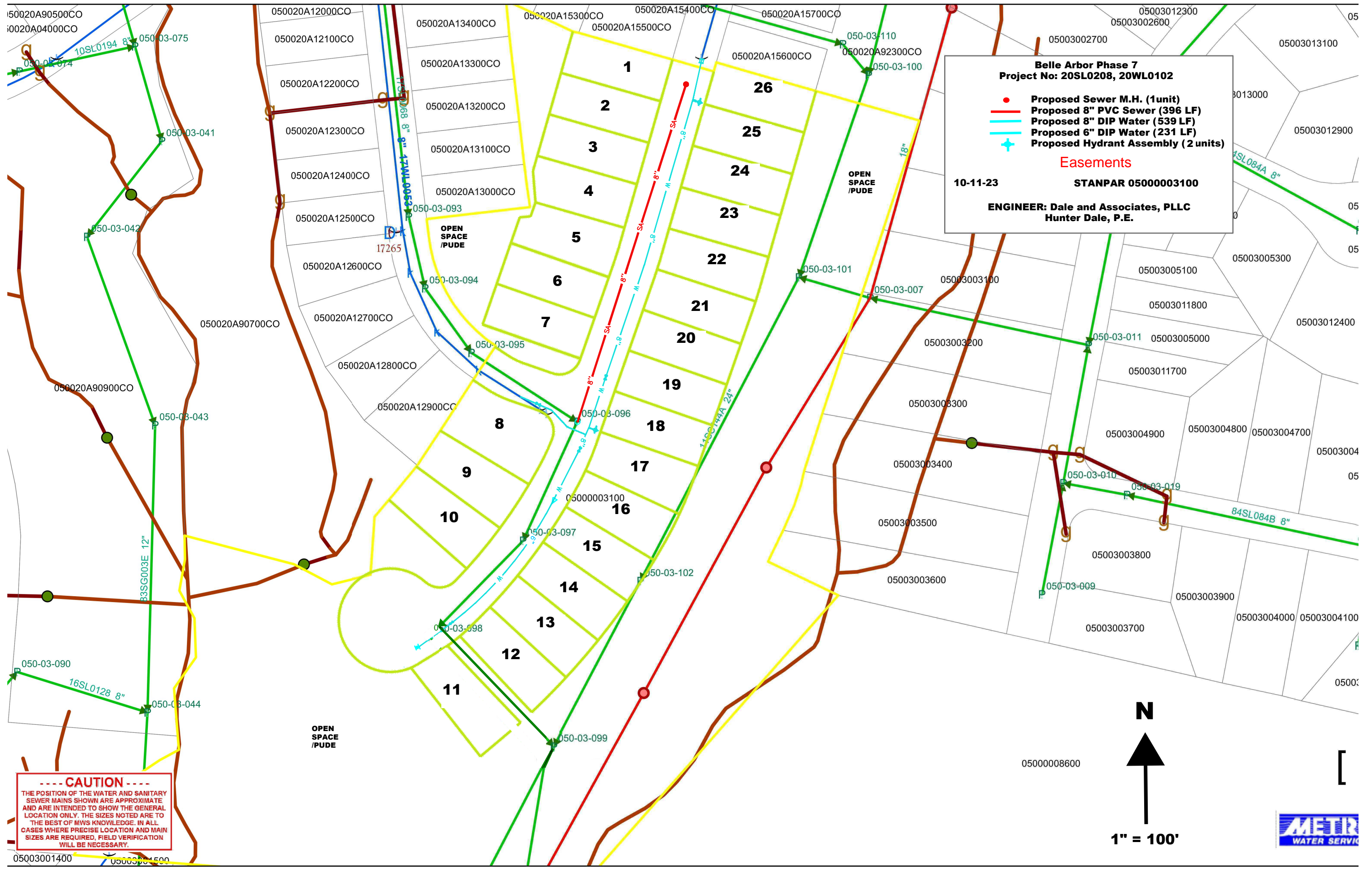
A handwritten signature in blue ink that reads "Lisa Milligan".

Lisa Milligan
Assistant Director Land Development
Metro Planning Department
cc: *Metro Clerk*

**Re: Belle Arbor Phase 7
Planning Commission Mandatory Referral 2024M-015ES-001
Council District #03 Jennifer Gamble, Council Member**

A request for the acceptance approximately 231 linear feet of six-inch water main (DIP), approximately 593 linear feet of eight-inch water main (DIP), two fire hydrant assemblies, approximately 396 linear feet of eight-inch sanitary sewer main (PVC), one sanitary sewer manhole, and associated easements to serve the Belle Arbor Phase 7 development.





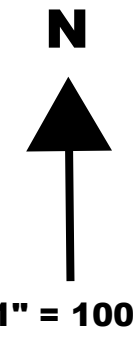
Belle Arbor Phase 7
Project No: 20SL0208, 20WL0102

- Proposed Sewer M.H. (1 unit)
- Proposed 8" PVC Sewer (396 LF)
- Proposed 8" DIP Water (539 LF)
- + Proposed 6" DIP Water (231 LF)
- + Proposed Hydrant Assembly (2 units)

Easements
 10-11-23
STANPAR 0500003100

ENGINEER: Dale and Associates, PLLC
Hunter Dale, P.E.

----- CAUTION -----
 THE POSITION OF THE WATER AND SANITARY SEWER MAINS SHOWN ARE APPROXIMATE AND ARE INTENDED TO SHOW THE GENERAL LOCATION ONLY. THE SIZES NOTED ARE TO THE BEST OF MWS KNOWLEDGE. IN ALL CASES WHERE PRECISE LOCATION AND MAIN SIZES ARE REQUIRED, FIELD VERIFICATION WILL BE NECESSARY.



1" = 100'

