



January 17, 2024

To: Mike Atchison Metro Water Services

**Re: Chase Bank West End  
Planning Commission Mandatory Referral 2024M-006ES-001  
Council District #18 Tom Cash, Council Member**

On behalf of the Metropolitan Planning Commission, the following item, referred to the Commission as required by the Metro Charter, has been recommended for *approval* to the Metropolitan Council:

*A request for the acceptance of approximately 105 linear feet of eight-inch sanitary sewer main (PVC) and one sanitary sewer manhole to serve the Chase Bank West End development.*

The relevant Metro agencies (Metro Parks, Metro Public Works, Metro Water Services, Metro Emergency Communications, the Nashville Electric Service, Metro Finance – Public Property and the Metro Historical Commission) have reviewed the proposal and concur in the recommendation for approval. This request must be approved by the Metro Council to become effective. A sketch showing the location of the request is attached to this letter.

**Conditions that apply to this approval: none**

This recommendation for approval is given as set forth in the Metropolitan Planning Commission Rules and Procedures. If you have any questions about this matter, please contact Delilah Rhodes at [Delilah.Rhodes@nashville.gov](mailto:Delilah.Rhodes@nashville.gov) or 615-862-7208

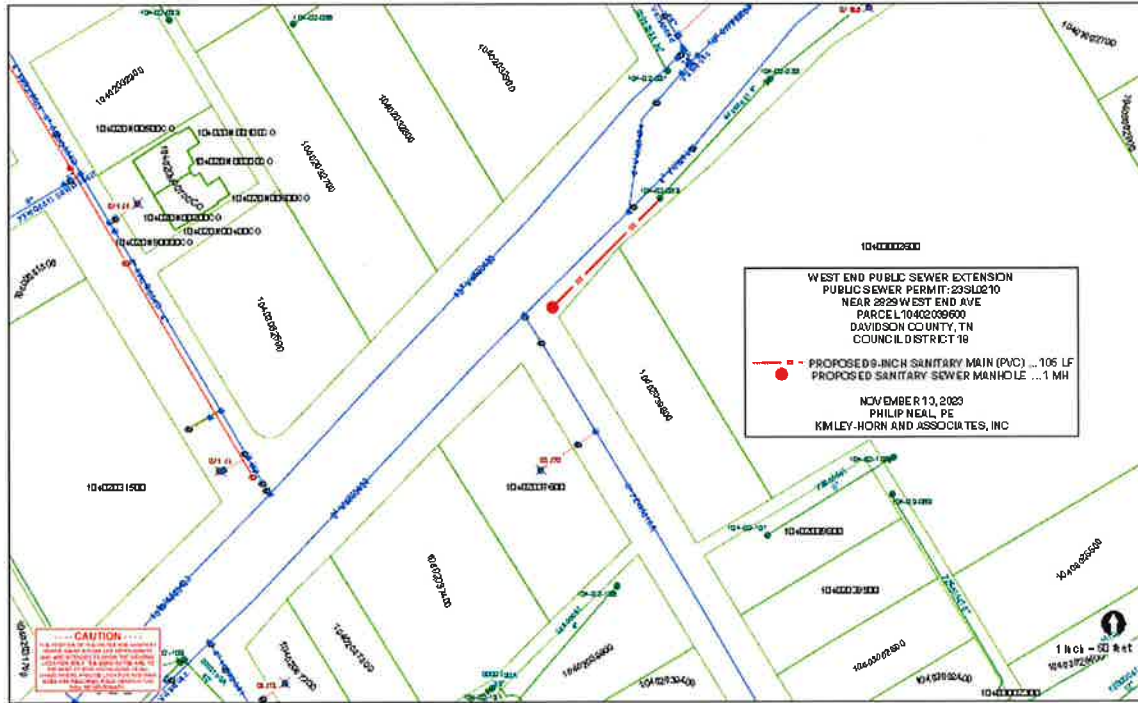
Sincerely,

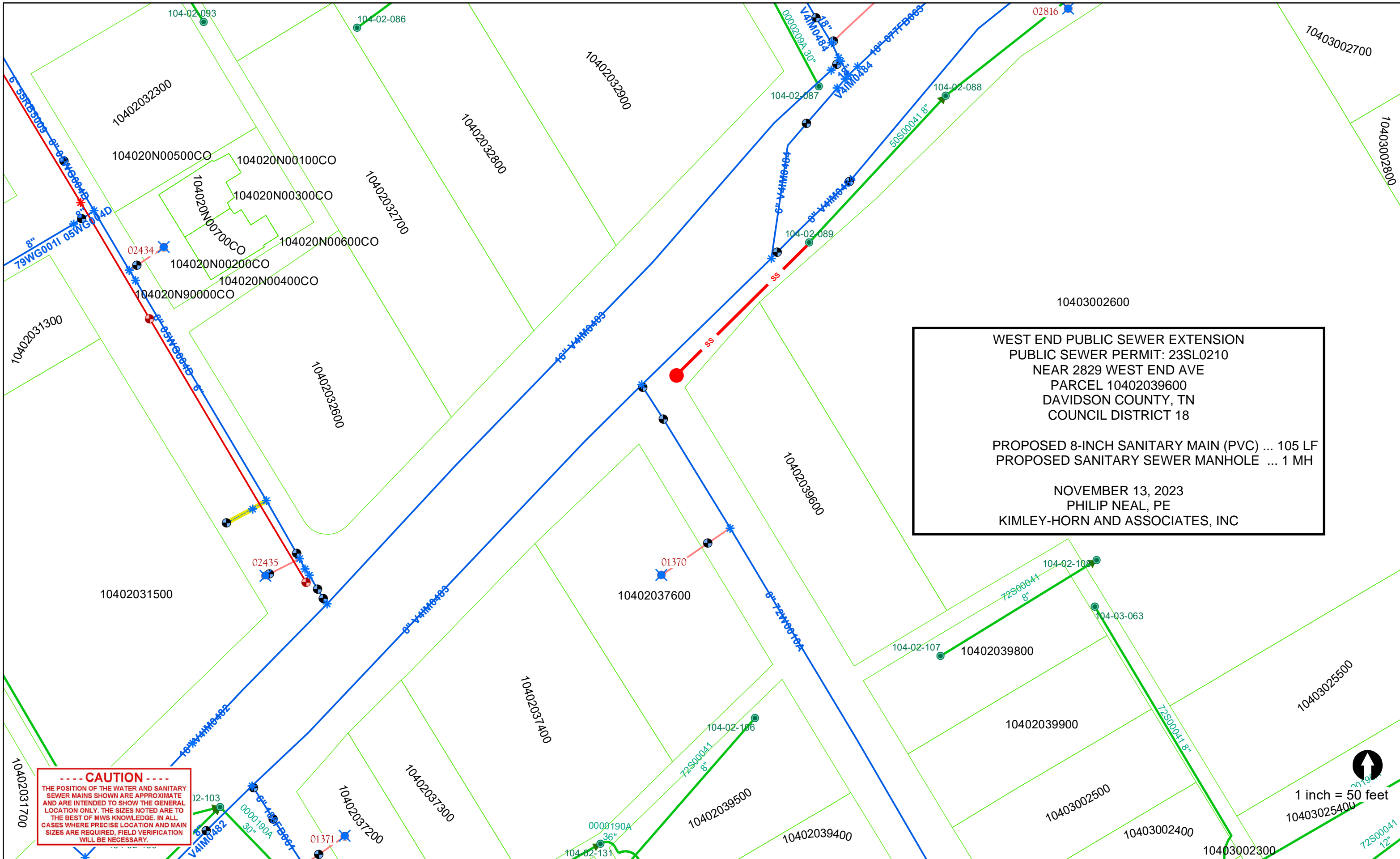
A handwritten signature in blue ink, appearing to read "Lisa Milligan".

Lisa Milligan  
Assistant Director Land Development  
Metro Planning Department  
cc: *Metro Clerk*

**Re: Chase Bank West End  
Planning Commission Mandatory Referral 2024M-006ES-001  
Council District #18 Tom Cash, Council Member**

*A request for the acceptance of approximately 105 linear feet of eight-inch sanitary sewer main (PVC) and one sanitary sewer manhole to serve the Chase Bank West End development.*





WEST END PUBLIC SEWER EXTENSION  
 PUBLIC SEWER PERMIT: 23SL0210  
 NEAR 2829 WEST END AVE  
 PARCEL 10402039600  
 DAVIDSON COUNTY, TN  
 COUNCIL DISTRICT 18

PROPOSED 8-INCH SANITARY MAIN (PVC) ... 105 LF  
 PROPOSED SANITARY SEWER MANHOLE ... 1 MH

NOVEMBER 13, 2023  
 PHILIP NEAL, PE  
 KIMLEY-HORN AND ASSOCIATES, INC

**----- CAUTION -----**  
 THE POSITION OF THE WATER AND SANITARY SEWER MAINS SHOWN ARE APPROXIMATE AND ARE INTENDED TO SHOW THE GENERAL LOCATION ONLY. THE SIZES NOTED ARE TO THE BEST OF MWS KNOWLEDGE. IN ALL CASES WHERE PRECISE LOCATION AND MAIN SIZES ARE REQUIRED, FIELD VERIFICATION WILL BE NECESSARY.

1 inch = 50 feet