



**METROPOLITAN GOVERNMENT OF NASHVILLE
AND DAVIDSON COUNTY**

Metro Office Building
800 President Ronald Reagan Way
P. O. Box 196300
Nashville, TN 37219-6300

October 19, 2022

To: Stephanie James, Metro Water Services

**Re: THE CHELSEA AT OCEOLA
Planning Commission Mandatory Referral #2022M-157ES-001
Council District #20 Mary Carolyn Roberts, Council Member**

On behalf of the Metropolitan Planning Commission, the following item, referred to the Commission as required by the Metro Charter, has been recommended for *approval* to the Metropolitan Council:

A request for the abandonment of approximately 180 linear feet of four-inch water main and 188 linear feet of two-inch water main and the acceptance of approximately 374 linear feet of eight inch (DIP) of water main and one sanitary sewer manhole to serve The Chelsea at Oceola development.

The relevant Metro agencies (Metro Parks, Metro Public Works, Metro Water Services, Metro Emergency Communications, the Nashville Electric Service, Metro Finance – Public Property and the Metro Historical Commission) have reviewed the proposal and concur in the recommendation for approval. This request must be approved by the Metro Council to become effective. A sketch showing the location of the request is attached to this letter.

Conditions that apply to this approval: none

This recommendation for approval is given as set forth in the Metropolitan Planning Commission Rules and Procedures. If you have any questions about this matter, please contact Delilah Rhodes at delilah.rhodes@nashville.gov or 615-862-7208.

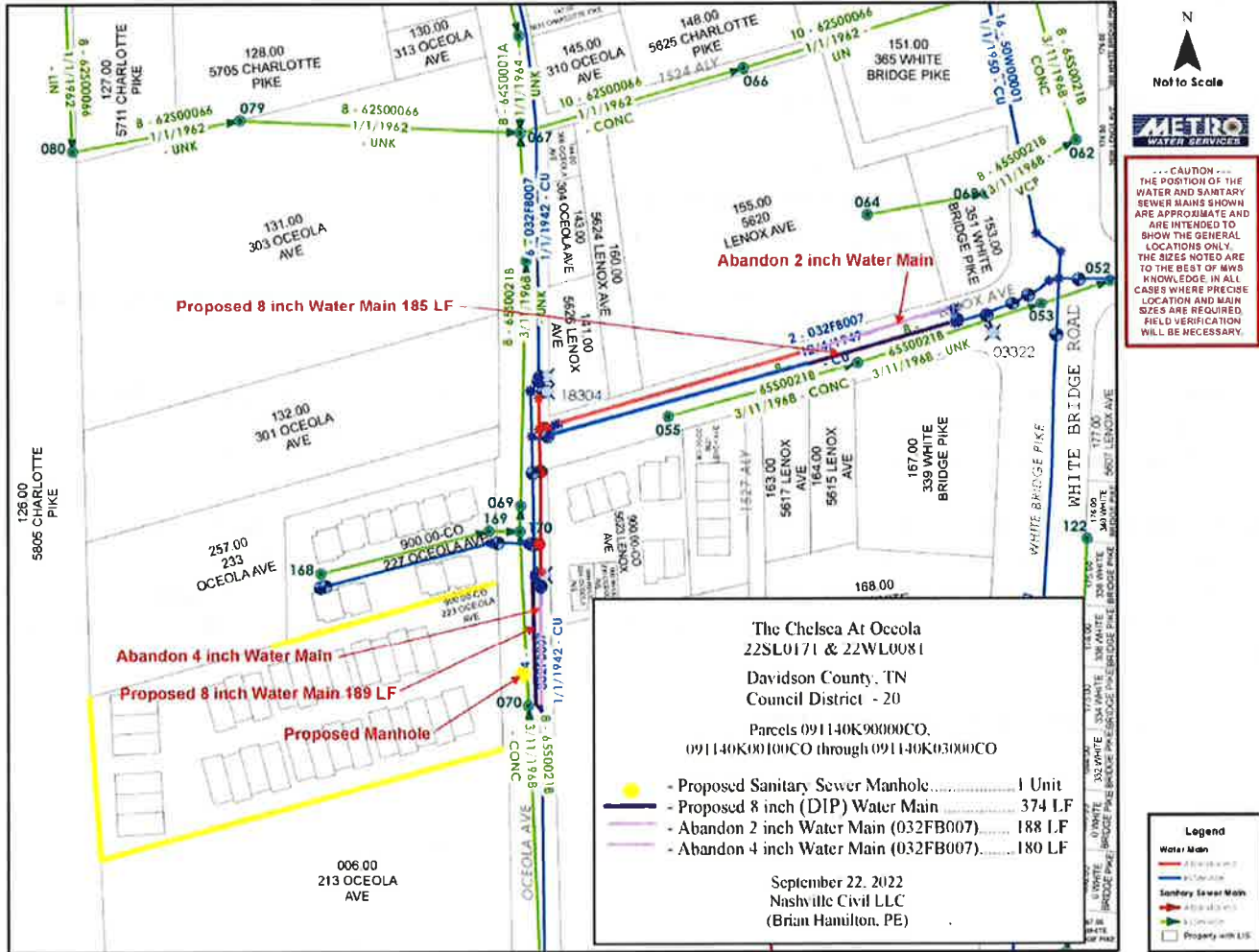
Sincerely,

A handwritten signature in blue ink that reads "Lisa Milligan".

Lisa Milligan
Land Development Manager
Metro Planning Department
cc: *Metro Clerk*

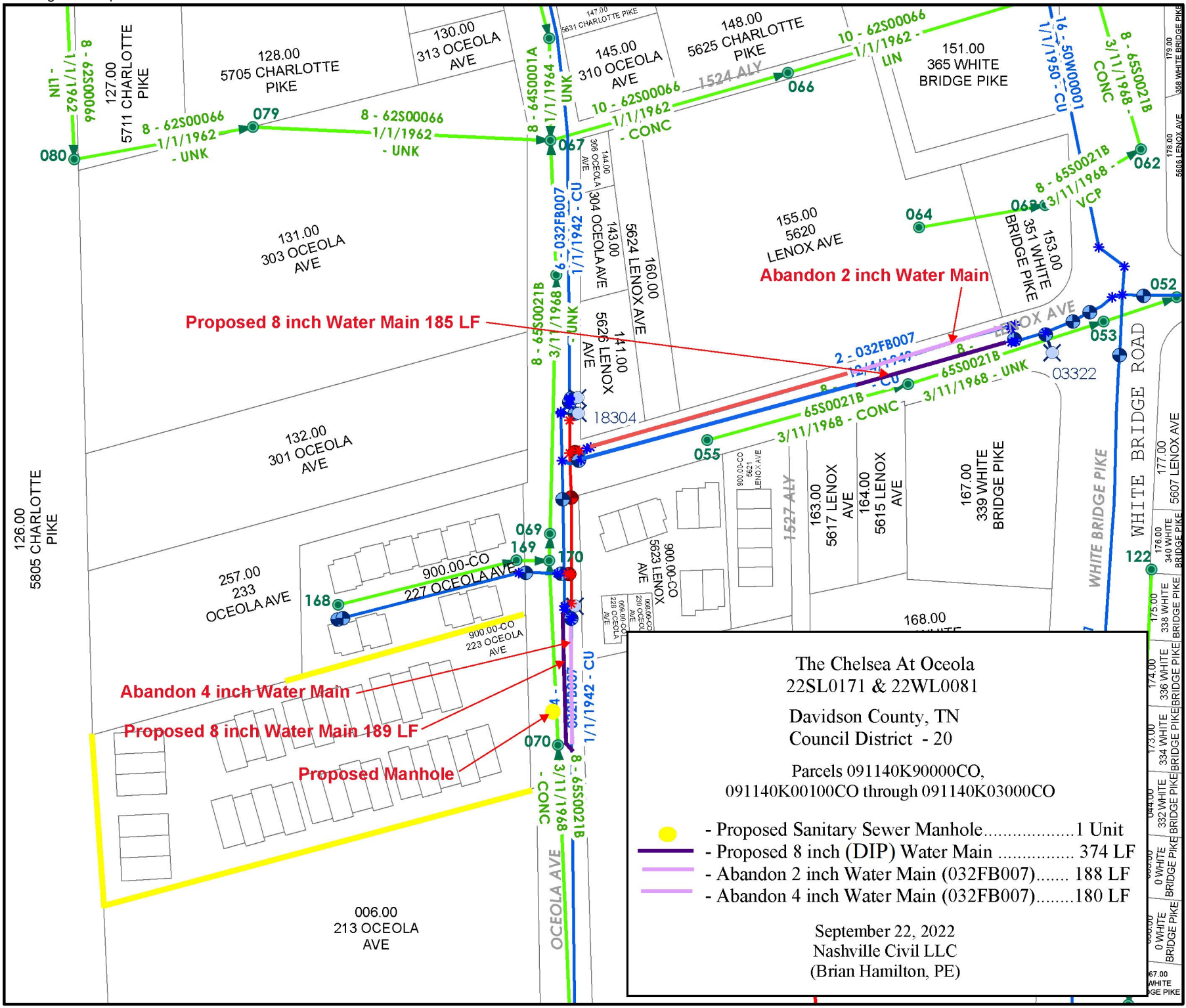
Re: THE CHELSEA AT OCEOLA
Planning Commission Mandatory Referral #2022M-157ES-001
Council District #20 Mary Carolyn Roberts, Council Member

A request for the abandonment of approximately 180 linear feet of four-inch water main and 188 linear feet of two-inch water main and the acceptance of approximately 374 linear feet of eight inch (DIP) of water main and one sanitary sewer manhole to serve The Chelsea at Oceola development.





--- CAUTION ---
 THE POSITION OF THE WATER AND SANITARY SEWER MAINS SHOWN ARE APPROXIMATE AND ARE INTENDED TO SHOW THE GENERAL LOCATIONS ONLY. THE SIZES NOTED ARE TO THE BEST OF MWS KNOWLEDGE. IN ALL CASES WHERE PRECISE LOCATION AND MAIN SIZES ARE REQUIRED, FIELD VERIFICATION WILL BE NECESSARY.



Proposed 8 inch Water Main 185 LF

Abandon 2 inch Water Main

Abandon 4 inch Water Main

Proposed 8 inch Water Main 189 LF

Proposed Manhole

The Chelsea At Oceola
 22SL0171 & 22WL0081
 Davidson County, TN
 Council District - 20

Parcels 091140K9000CO,
 091140K00100CO through 091140K03000CO

- - Proposed Sanitary Sewer Manhole..... 1 Unit
- - Proposed 8 inch (DIP) Water Main 374 LF
- - Abandon 2 inch Water Main (032FB007)..... 188 LF
- - Abandon 4 inch Water Main (032FB007)..... 180 LF

September 22, 2022
 Nashville Civil LLC
 (Brian Hamilton, PE)

Legend

Water Main

- Abandoned
- In Service

Sanitary Sewer Main

- Abandoned
- In Service

Property with LIS