



**METROPOLITAN GOVERNMENT OF NASHVILLE
AND DAVIDSON COUNTY**

Metro Office Building
800 President Ronald Reagan Way
P.O. Box 196300
Nashville, TN 37219-6300

January 6, 2023

To: Stephanie James Metro Water Services

**Re: 1631 CORPORATE PLACE
Planning Commission Mandatory Referral # 2022M-195ES-001
Council District #33 Antoinette Lee, Council Member**

On behalf of the Metropolitan Planning Commission, the following item, referred to the Commission as required by the Metro Charter, has been recommended for *approval* to the Metropolitan Council:

A request for the acceptance of approximately 478 linear feet of eight-inch water main (DIP) and one fire hydrant assembly to serve the development at 1631 Corporate Place.

The relevant Metro agencies (Metro Parks, Metro Public Works, Metro Water Services, Metro Emergency Communications, the Nashville Electric Service, Metro Finance – Public Property and the Metro Historical Commission) have reviewed the proposal and concur in the recommendation for approval. This request must be approved by the Metro Council to become effective. A sketch showing the location of the request is attached to this letter.

Conditions that apply to this approval: none

This recommendation for approval is given as set forth in the Metropolitan Planning Commission Rules and Procedures. If you have any questions about this matter, please contact Delilah Rhodes at delilah.rhodes@nashville.gov or 615-862-7208.

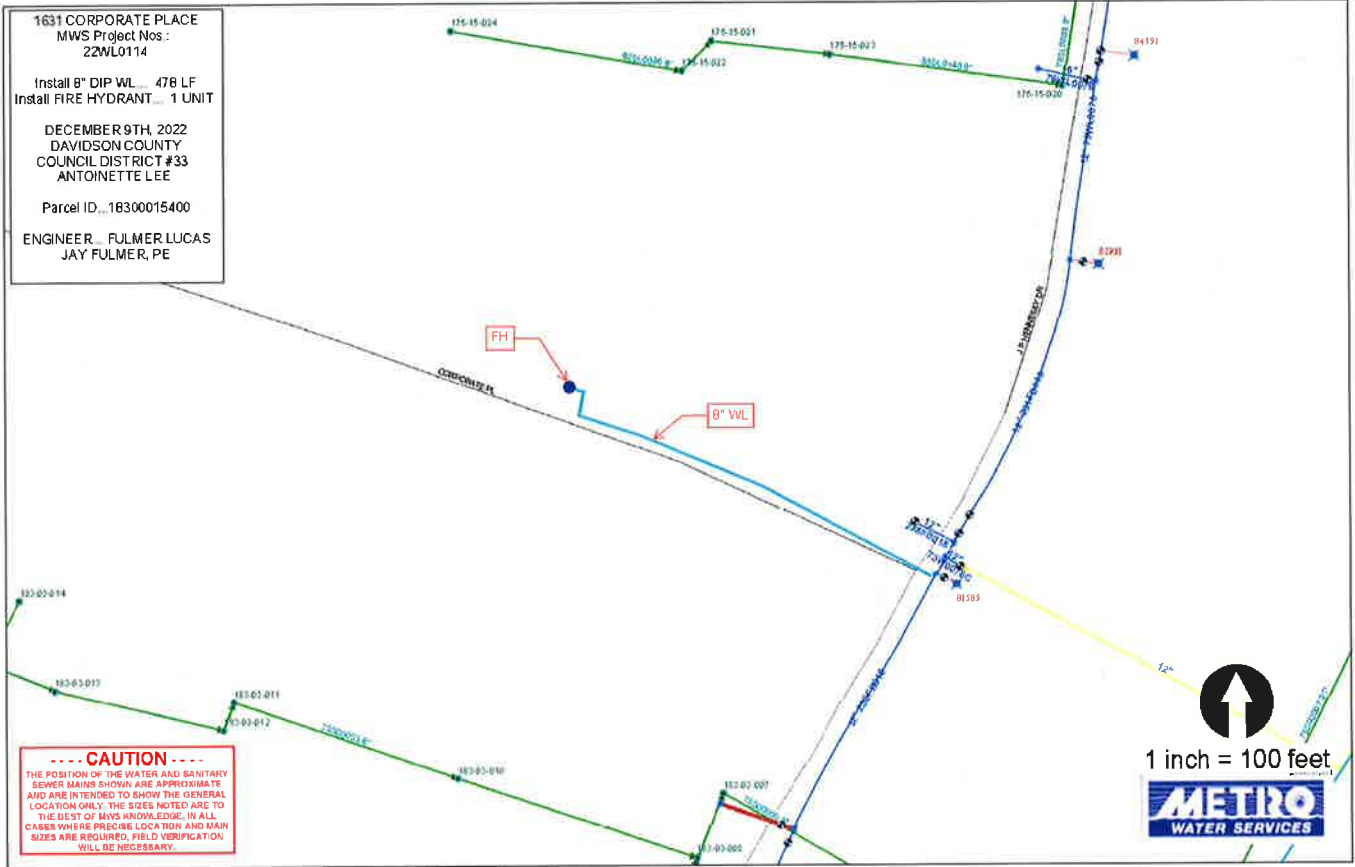
Sincerely,

A handwritten signature in blue ink, appearing to read "Lisa Milligan".

Lisa Milligan
Land Development Manager
Metro Planning Department
cc: Metro Clerk

Re: 1631 CORPORATE PLACE
Planning Commission Mandatory Referral # 2022M-195ES-001
Council District #33 Antoinette Lee, Council Member

A request for the acceptance of approximately 478 linear feet of eight-inch water main (DIP) and one fire hydrant assembly to serve the development at 1631 Corporate Place.



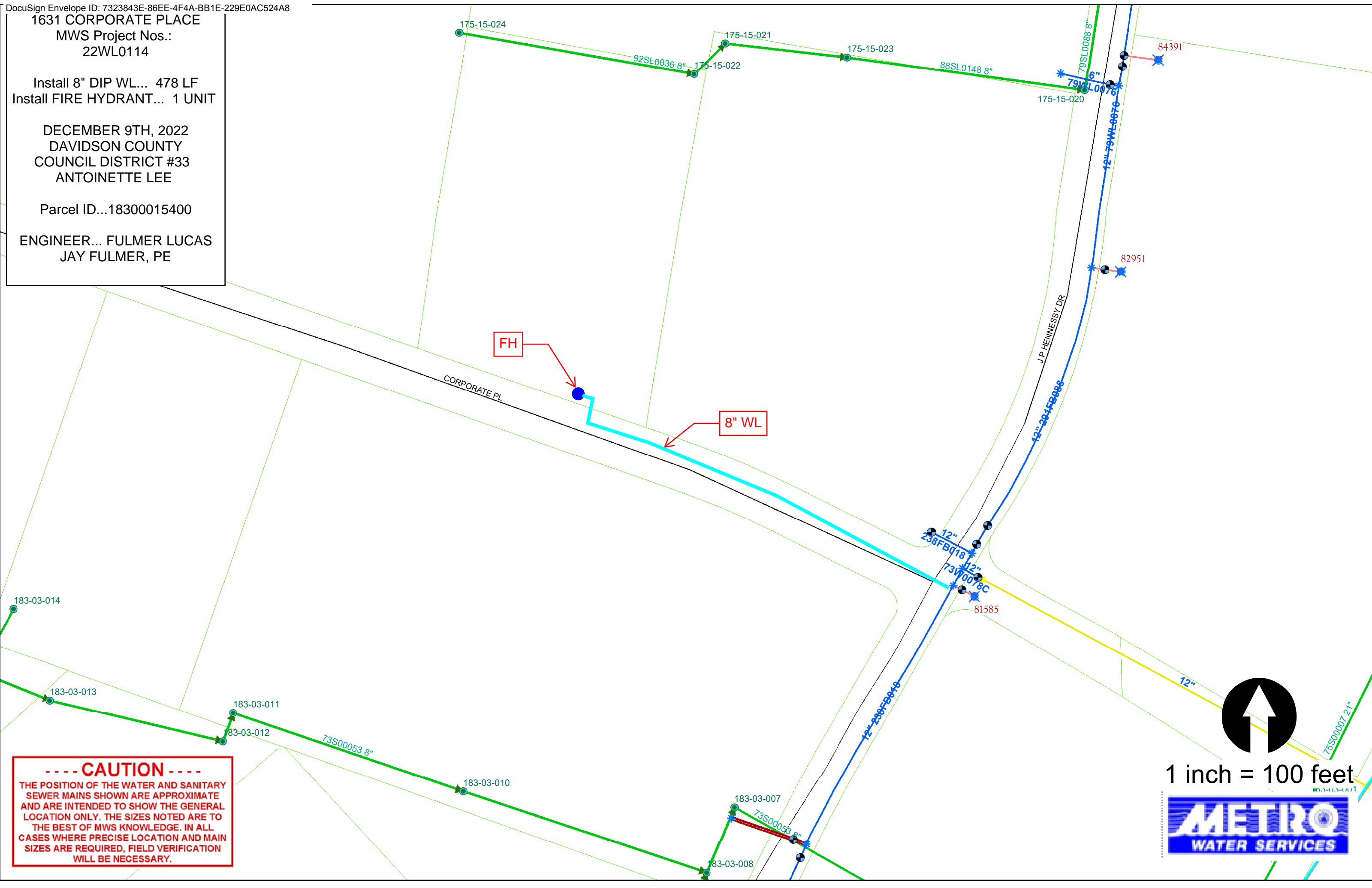
1631 CORPORATE PLACE
MWS Project Nos.:
22WL0114

Install 8" DIP WL... 478 LF
Install FIRE HYDRANT... 1 UNIT

DECEMBER 9TH, 2022
DAVIDSON COUNTY
COUNCIL DISTRICT #33
ANTOINETTE LEE

Parcel ID...18300015400

ENGINEER... FULMER LUCAS
JAY FULMER, PE



----- CAUTION -----
 THE POSITION OF THE WATER AND SANITARY
 SEWER MAINS SHOWN ARE APPROXIMATE
 AND ARE INTENDED TO SHOW THE GENERAL
 LOCATION ONLY. THE SIZES NOTED ARE TO
 THE BEST OF MWS KNOWLEDGE. IN ALL
 CASES WHERE PRECISE LOCATION AND MAIN
 SIZES ARE REQUIRED, FIELD VERIFICATION
 WILL BE NECESSARY.

1 inch = 100 feet