



**METROPOLITAN GOVERNMENT OF NASHVILLE
AND DAVIDSON COUNTY**

Metro Office Building
800 President Ronald Reagan Way
P.O. Box 196300
Nashville, TN 37219-6300

July 3, 2023

To: Edward Thurman Metro Water Services

**Re: 5400 MT. VIEW ROAD
Planning Commission Mandatory Referral 2023M-108ES-001
Council District #32 Joy Styles, Council Member**

On behalf of the Metropolitan Planning Commission, the following item, referred to the Commission as required by the Metro Charter, has been recommended for *approval* to the Metropolitan Council:

A request for the acceptance of approximately 300 linear feet of 8-inch sanitary sewer main (PVC), 354 linear feet of 8-inch sanitary sewer main (DIP), and four sanitary sewer manholes to serve the development at 5400 Mt. View Road.

The relevant Metro agencies (Metro Parks, Metro Public Works, Metro Water Services, Metro Emergency Communications, the Nashville Electric Service, Metro Finance – Public Property and the Metro Historical Commission) have reviewed the proposal and concur in the recommendation for approval. This request must be approved by the Metro Council to become effective. A sketch showing the location of the request is attached to this letter.

Conditions that apply to this approval: none

This recommendation for approval is given as set forth in the Metropolitan Planning Commission Rules and Procedures. If you have any questions about this matter, please contact Delilah Rhodes at delilah.rhodes@nashville.gov or 615-862-7208.

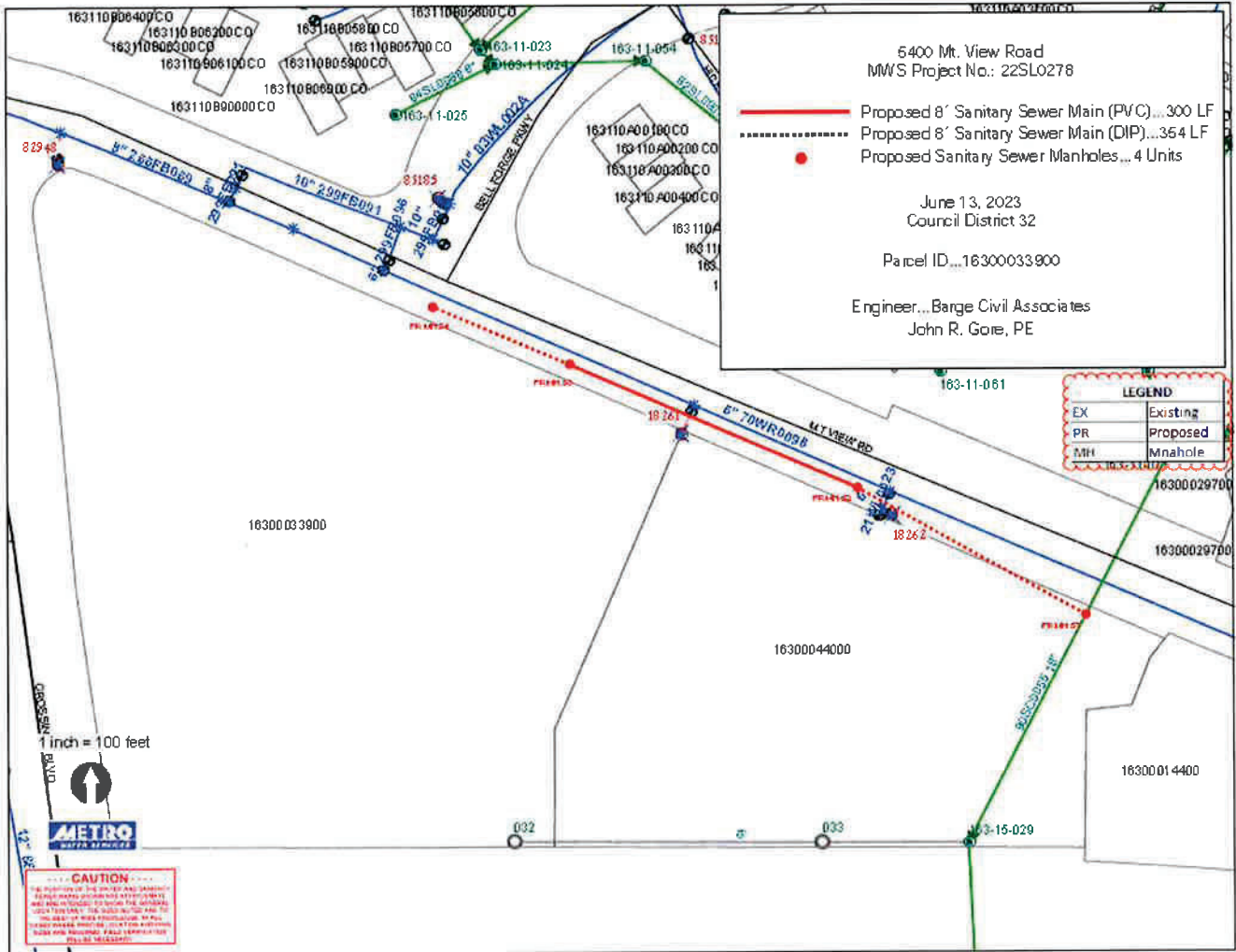
Sincerely,

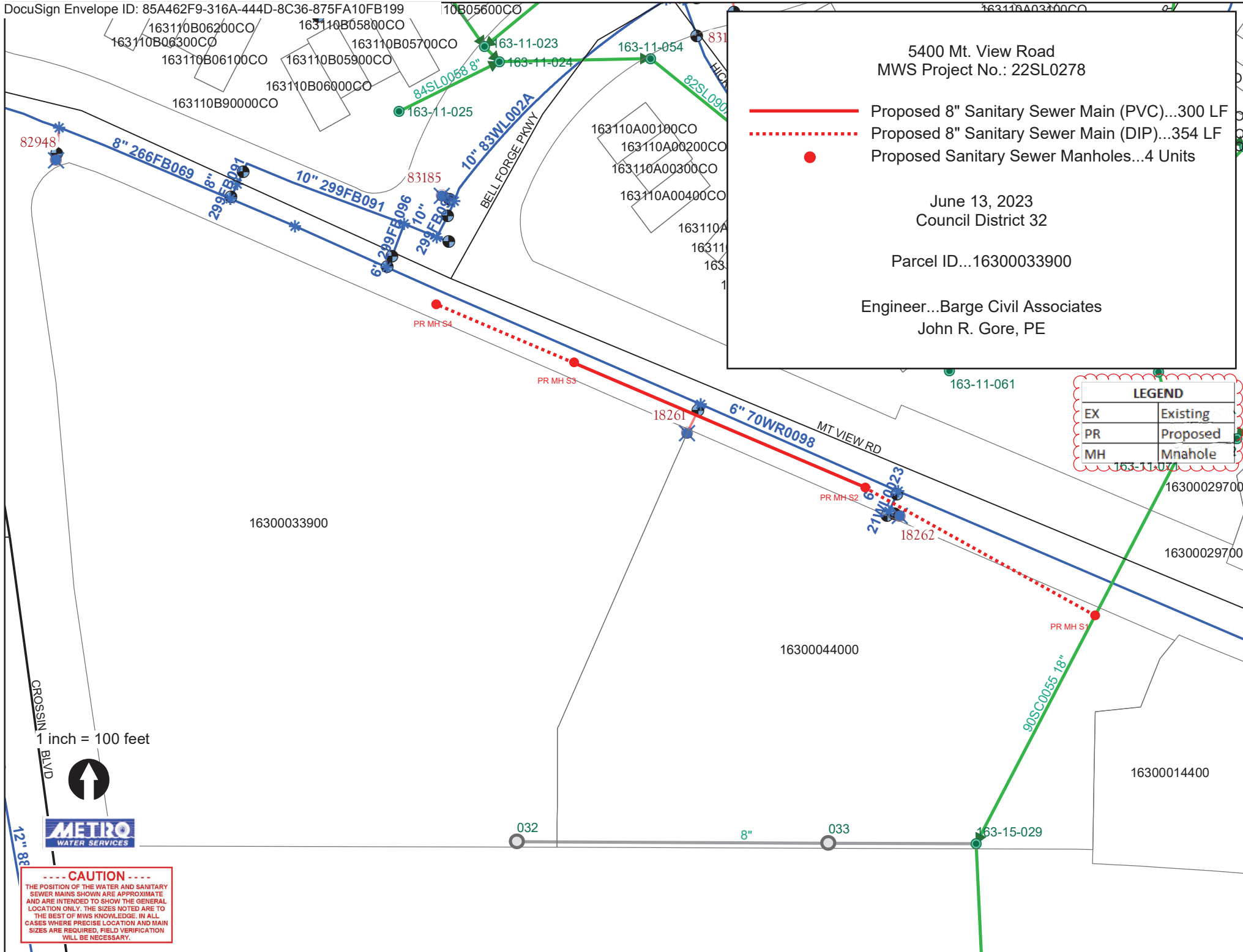
A handwritten signature in blue ink that reads "Lisa Milligan".

Lisa Milligan
Land Development Manager
Metro Planning Department
cc: *Metro Clerk*

Re: 5400 MT. VIEW ROAD
Planning Commission Mandatory Referral # 2023M-108ES-001
Council District #32 Joy Styles, Council Member

A request for the acceptance of approximately 300 linear feet of 8-inch sanitary sewer main (PVC), 354 linear feet of 8-inch sanitary sewer main (DIP), and four sanitary sewer manholes to serve the development at 5400 Mt. View Road.





5400 Mt. View Road
MWS Project No.: 22SL0278

- Proposed 8" Sanitary Sewer Main (PVC)...300 LF
- - - - - Proposed 8" Sanitary Sewer Main (DIP)...354 LF
- Proposed Sanitary Sewer Manholes...4 Units

June 13, 2023
Council District 32

Parcel ID... 16300033900

Engineer... Barge Civil Associates
John R. Gore, PE

LEGEND	
EX	Existing
PR	Proposed
MH	Mnahole

1 inch = 100 feet



CAUTION

THE POSITION OF THE WATER AND SANITARY SEWER MAINS SHOWN ARE APPROXIMATE AND ARE INTENDED TO SHOW THE GENERAL LOCATION ONLY. THE SIZES NOTED ARE TO THE BEST OF MWS KNOWLEDGE. IN ALL CASES WHERE PRECISE LOCATION AND MAIN SIZES ARE REQUIRED, FIELD VERIFICATION WILL BE NECESSARY.