



**METROPOLITAN GOVERNMENT
OF NASHVILLE AND DAVIDSON COUNTY**

Planning Department
Metro Office Building
800 Second Avenue South
Nashville, Tennessee 37201

January 24, 2022

To: Mike Atchison, Metro Water Services

**Re: Chaudhuri Acres
Planning Commission Mandatory Referral #2022M-015ES-001**

On behalf of the Metropolitan Planning Commission, the following item, referred to the Commission as required by the Metro Charter, has been recommended for *approval* to the Metropolitan Council:

A request for the acceptance of 815 linear feet of eight inch sanitary sewer main (PVC) and five sanitary sewer manholes to serve the Chaudhuri Acres development in Williamson County (see sketch for details).

The relevant Metro agencies (Metro Parks, Metro Public Works, Metro Water Services, Metro Emergency Communications, the Nashville Electric Service, Metro Finance – Public Property and the Metro Historical Commission) have reviewed the proposal and concur in the recommendation for approval. This request must be approved by the Metro Council to become effective. A sketch showing the location of the request is attached to this letter.

Conditions that apply to this approval: none

This recommendation for approval is given as set forth in the Metropolitan Planning Commission Rules and Procedures. If you have any questions about this matter, please contact Michelle Hollingsworth at michelle.hollingsworth@nashville.gov or 615-862-7197.

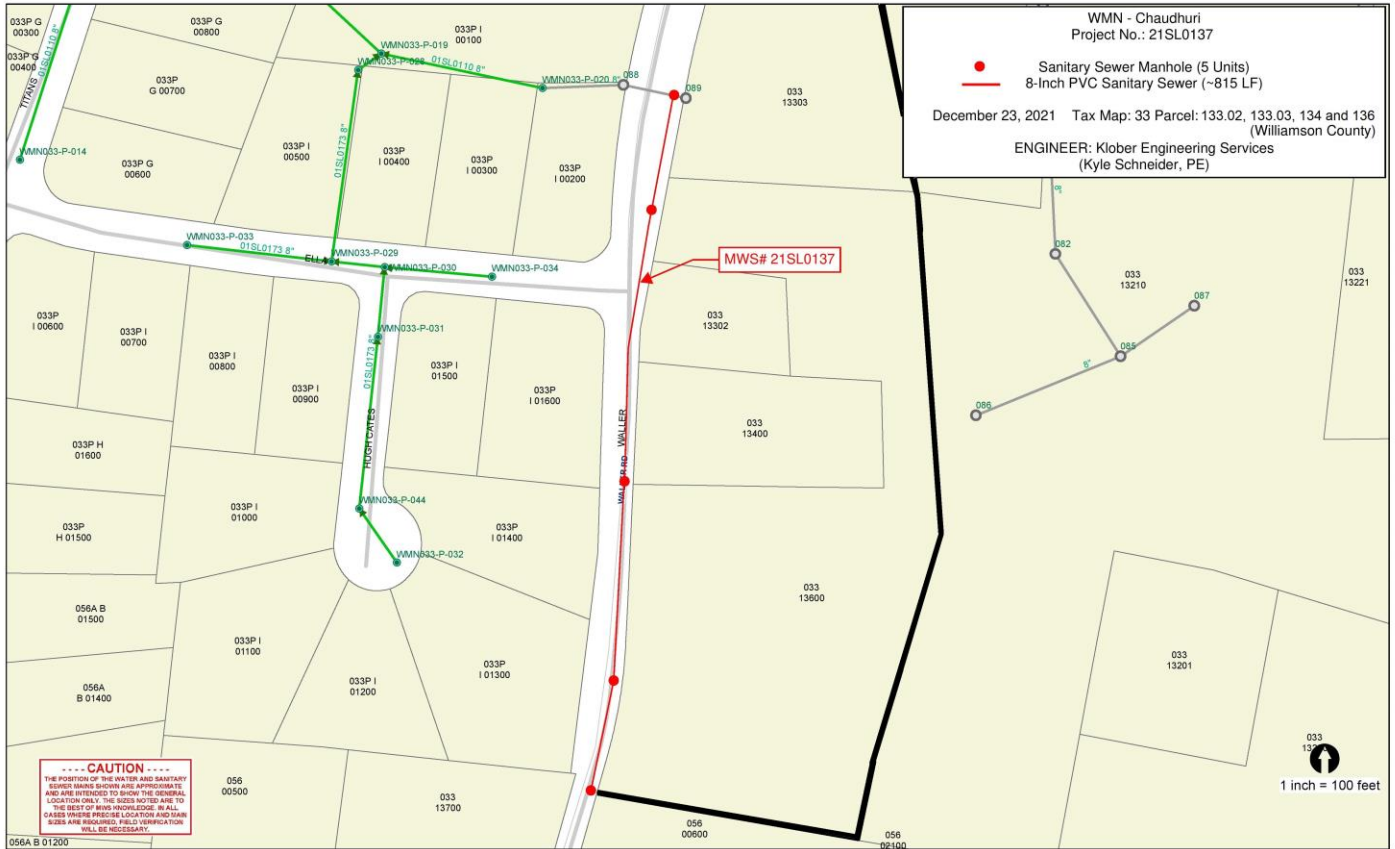
Sincerely,

A handwritten signature in black ink that reads 'Robert Leeman'.

Robert Leeman
Deputy Director
Metro Planning Department
cc: *Metro Clerk*

**Re: Chaudhuri Acres
Planning Commission Mandatory Referral #2022M-015ES-001**

A request for the acceptance of 815 linear feet of eight inch sanitary sewer main (PVC) and five sanitary sewer manholes to serve the Chaudhuri Acres development in Williamson County (see sketch for details).

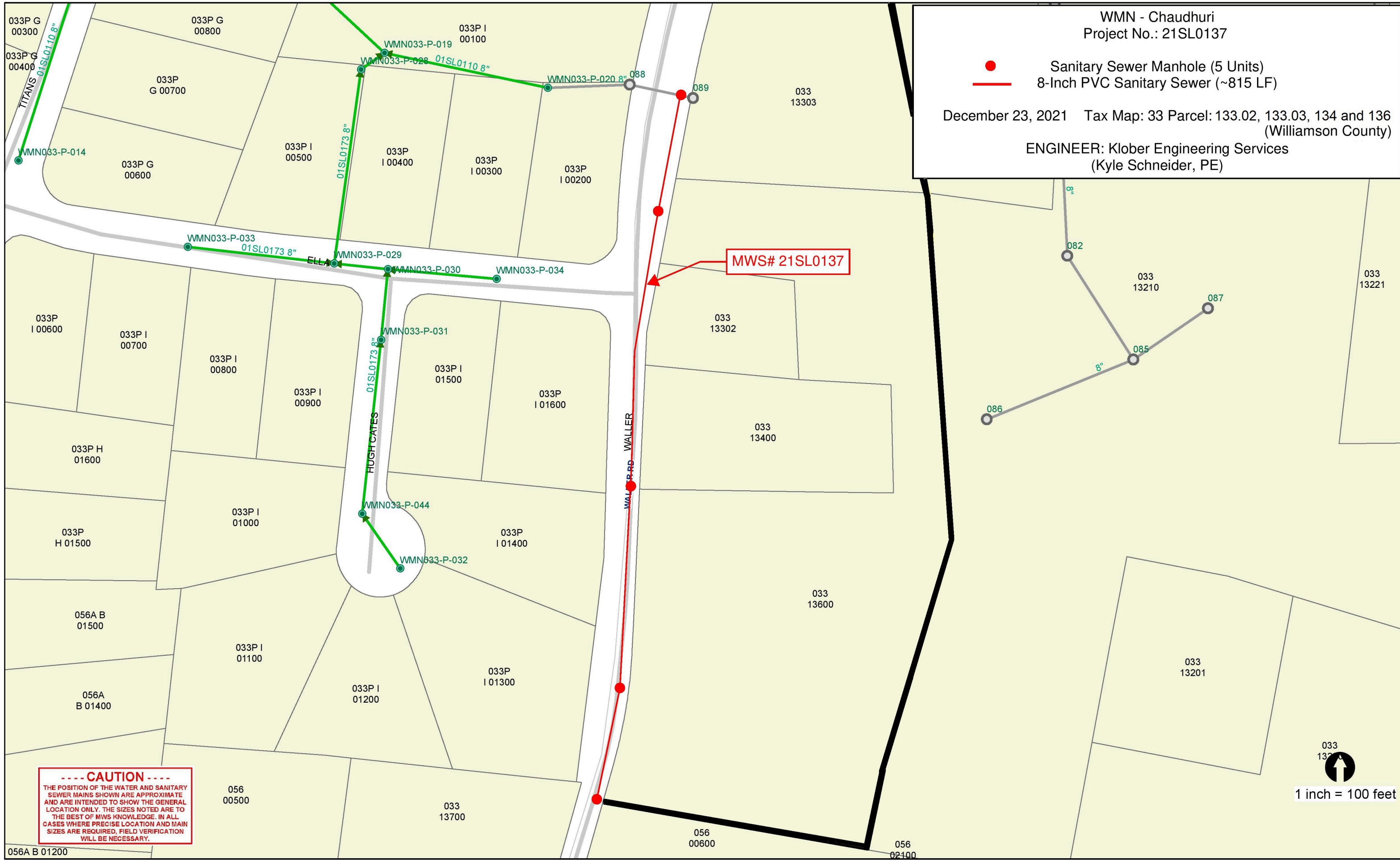


WMN - Chaudhuri
Project No.: 21SL0137

- Sanitary Sewer Manhole (5 Units)
- 8-Inch PVC Sanitary Sewer (~815 LF)

December 23, 2021 Tax Map: 33 Parcel: 133.02, 133.03, 134 and 136
(Williamson County)

ENGINEER: Klobber Engineering Services
(Kyle Schneider, PE)



MWS# 21SL0137

----- CAUTION -----
 THE POSITION OF THE WATER AND SANITARY SEWER MAINS SHOWN ARE APPROXIMATE AND ARE INTENDED TO SHOW THE GENERAL LOCATION ONLY. THE SIZES NOTED ARE TO THE BEST OF MWS KNOWLEDGE. IN ALL CASES WHERE PRECISE LOCATION AND MAIN SIZES ARE REQUIRED, FIELD VERIFICATION WILL BE NECESSARY.

