



**METROPOLITAN GOVERNMENT OF NASHVILLE  
AND DAVIDSON COUNTY**

Metro Office Building  
800 President Ronald Reagan Way  
P.O. Box 196300  
Nashville, TN 37219-6300

October 6, 2023

To: Stephanie James Metro Water Services

**Re: Homes at Providence Heights  
Planning Commission Mandatory Referral 2023M-149ES-001  
Council District #26 Courtney Johnston, Council Member**

On behalf of the Metropolitan Planning Commission, the following item, referred to the Commission as required by the Metro Charter, has been recommended for *approval* to the Metropolitan Council:

*A request for the acceptance of approximately 52 linear feet of six inch water main (DIP) and approximately 57 linear feet of eight inch sanitary sewer main (DIP), one sanitary sewer manhole, and associated easement to serve the Homes at Providence Heights.*

The relevant Metro agencies (Metro Parks, Metro Public Works, Metro Water Services, Metro Emergency Communications, the Nashville Electric Service, Metro Finance – Public Property and the Metro Historical Commission) have reviewed the proposal and concur in the recommendation for approval. This request must be approved by the Metro Council to become effective. A sketch showing the location of the request is attached to this letter.

**Conditions that apply to this approval: none**

This recommendation for approval is given as set forth in the Metropolitan Planning Commission Rules and Procedures. If you have any questions about this matter, please contact Christopher Paulsen at [Christopher.paulsen@nashville.gov](mailto:Christopher.paulsen@nashville.gov) or 615-880-2452.

Sincerely,

A handwritten signature in blue ink that reads 'Lisa Milligan'.

Lisa Milligan  
Land Development Manager  
Metro Planning Department  
cc: Metro Clerk

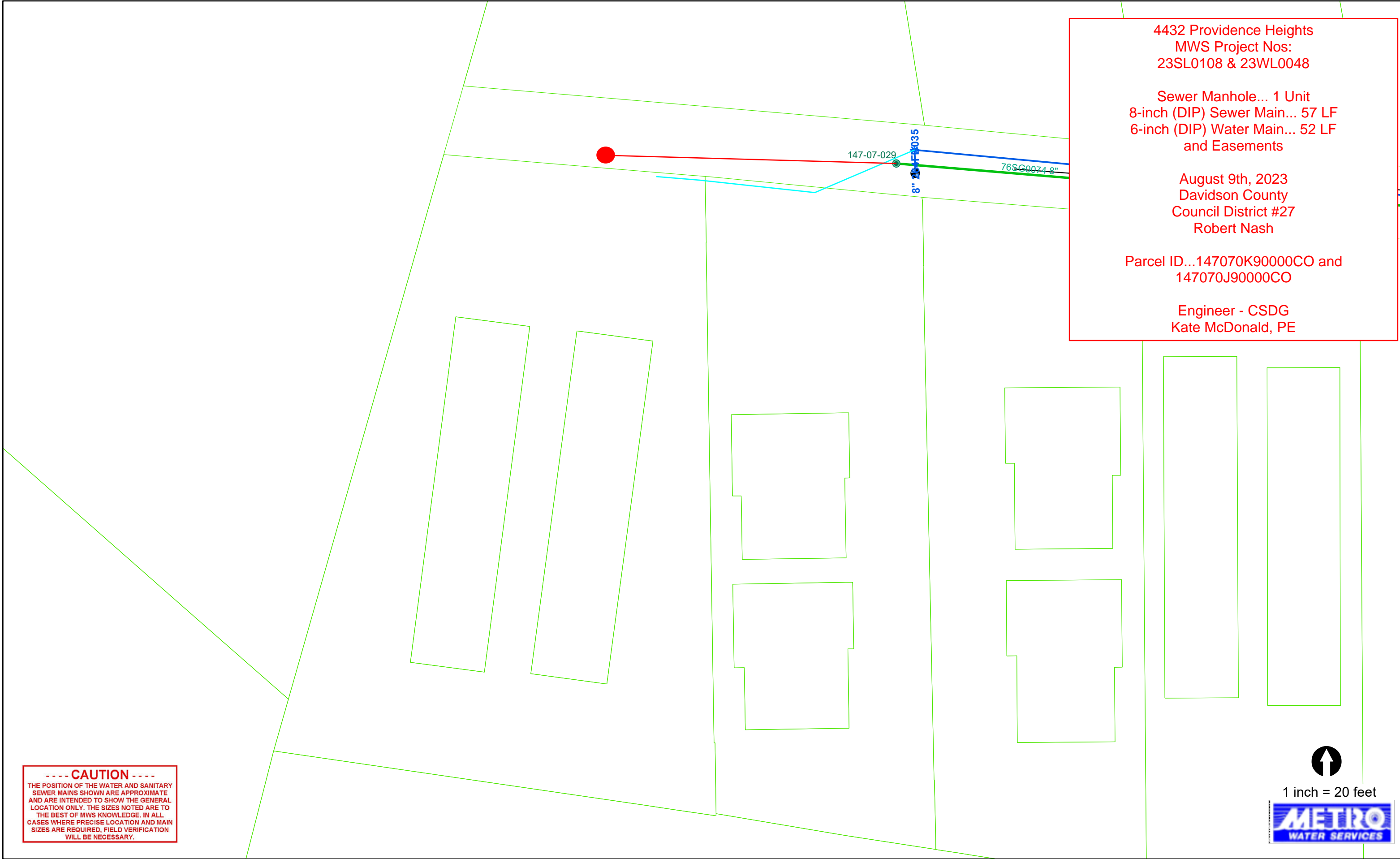
4432 Providence Heights  
 MWS Project Nos:  
 23SL0108 & 23WL0048

Sewer Manhole... 1 Unit  
 8-inch (DIP) Sewer Main... 57 LF  
 6-inch (DIP) Water Main... 52 LF  
 and Easements

August 9th, 2023  
 Davidson County  
 Council District #27  
 Robert Nash

Parcel ID...147070K90000CO and  
 147070J90000CO

Engineer - CSDG  
 Kate McDonald, PE



----- CAUTION -----  
 THE POSITION OF THE WATER AND SANITARY  
 SEWER MAINS SHOWN ARE APPROXIMATE  
 AND ARE INTENDED TO SHOW THE GENERAL  
 LOCATION ONLY. THE SIZES NOTED ARE TO  
 THE BEST OF MWS KNOWLEDGE. IN ALL  
 CASES WHERE PRECISE LOCATION AND MAIN  
 SIZES ARE REQUIRED, FIELD VERIFICATION  
 WILL BE NECESSARY.

