

N A S H V I L L E
P L A N N I N G

November 8, 2023

To: Stephanie James Metro Water Services

**Re: 1241 ANTIOCH DEVELOPMENT
Planning Commission Mandatory Referral 2023M-176ES-001
Council District #28 David Benton, Council Member**

On behalf of the Metropolitan Planning Commission, the following item, referred to the Commission as required by the Metro Charter, has been recommended for *approval* to the Metropolitan Council:

A request for the abandonment of approximately 286 linear feet of eight-inch water main (DIP) and the acceptance of approximately 296 linear feet of eight-inch water main (DIP) to serve the development at 1241 Antioch Pike.

The relevant Metro agencies (Metro Parks, Metro Public Works, Metro Water Services, Metro Emergency Communications, the Nashville Electric Service, Metro Finance – Public Property and the Metro Historical Commission) have reviewed the proposal and concur in the recommendation for approval. This request must be approved by the Metro Council to become effective. A sketch showing the location of the request is attached to this letter.

Conditions that apply to this approval: none

This recommendation for approval is given as set forth in the Metropolitan Planning Commission Rules and Procedures. If you have any questions about this matter, please contact Delilah Rhodes at Delilah.Rhodes@nashville.gov or 615-862-7208.

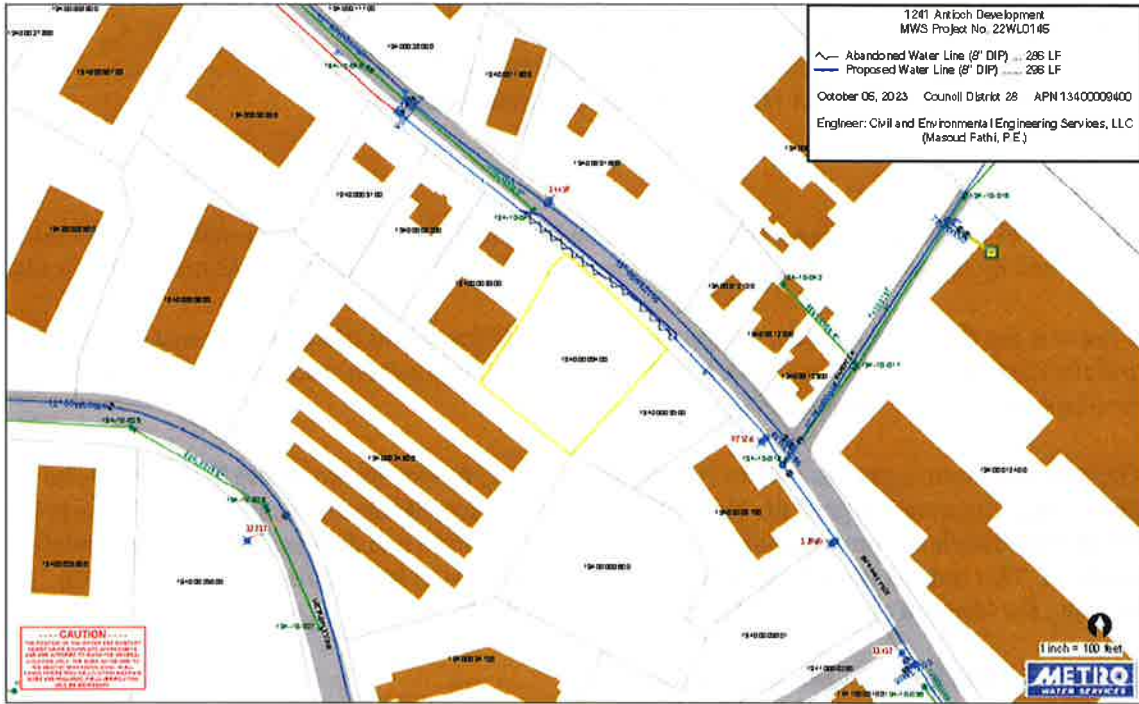
Sincerely,



Lisa Milligan
Assistant Director Land Development
Metro Planning Department
cc: *Metro Clerk*

Re: 1241 ANTIOCH DEVELOPMENT
Planning Commission Mandatory Referral 2023M-176ES-001
Council District #28 David Benton, Council Member

A request for the abandonment of approximately 286 linear feet of eight-inch water main (DIP) and the acceptance of approximately 296 linear feet of eight-inch water main (DIP) to serve the development at 1241 Antioch Pike.

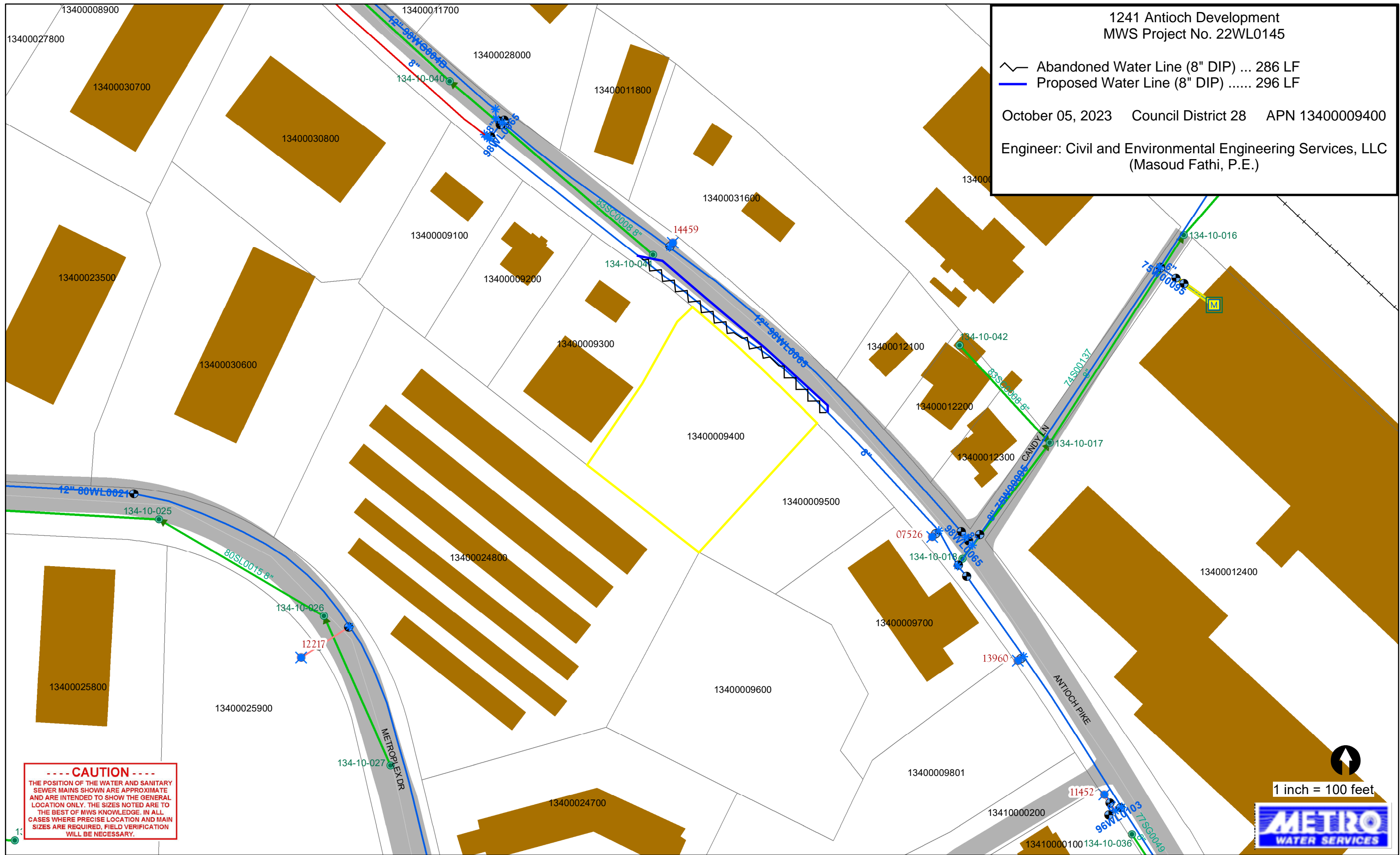


1241 Antioch Development
MWS Project No. 22WL0145

~ Abandoned Water Line (8" DIP) ... 286 LF
— Proposed Water Line (8" DIP) 296 LF

October 05, 2023 Council District 28 APN 13400009400

Engineer: Civil and Environmental Engineering Services, LLC
(Masoud Fathi, P.E.)



----- CAUTION -----
THE POSITION OF THE WATER AND SANITARY SEWER MAINS SHOWN ARE APPROXIMATE AND ARE INTENDED TO SHOW THE GENERAL LOCATION ONLY. THE SIZES NOTED ARE TO THE BEST OF MWS KNOWLEDGE. IN ALL CASES WHERE PRECISE LOCATION AND MAIN SIZES ARE REQUIRED, FIELD VERIFICATION WILL BE NECESSARY.

1 inch = 100 feet

