



**METROPOLITAN GOVERNMENT OF NASHVILLE
AND DAVIDSON COUNTY**

Metro Office Building
800 President Ronald Reagan Way
P.O. Box 196300
Nashville, TN 37219-6300

February 16, 2023

To: Edward Thurman Metro Water Services

**Re: 1620 CORPORATE PLACE
Planning Commission Mandatory Referral # 2023M-026ES-001
Council District #33 Antoinette Lee, Council Member**

On behalf of the Metropolitan Planning Commission, the following item, referred to the Commission as required by the Metro Charter, has been recommended for *approval* to the Metropolitan Council:

A request for the acceptance of approximately 490 linear feet of eight-inch water main (DIP) and one fire hydrant assembly to serve the development at 1620 Corporate Place.

The relevant Metro agencies (Metro Parks, Metro Public Works, Metro Water Services, Metro Emergency Communications, the Nashville Electric Service, Metro Finance – Public Property and the Metro Historical Commission) have reviewed the proposal and concur in the recommendation for approval. This request must be approved by the Metro Council to become effective. A sketch showing the location of the request is attached to this letter.

Conditions that apply to this approval: none

This recommendation for approval is given as set forth in the Metropolitan Planning Commission Rules and Procedures. If you have any questions about this matter, please contact Delilah Rhodes at delilah.rhodes@nashville.gov or 615-862-7208.

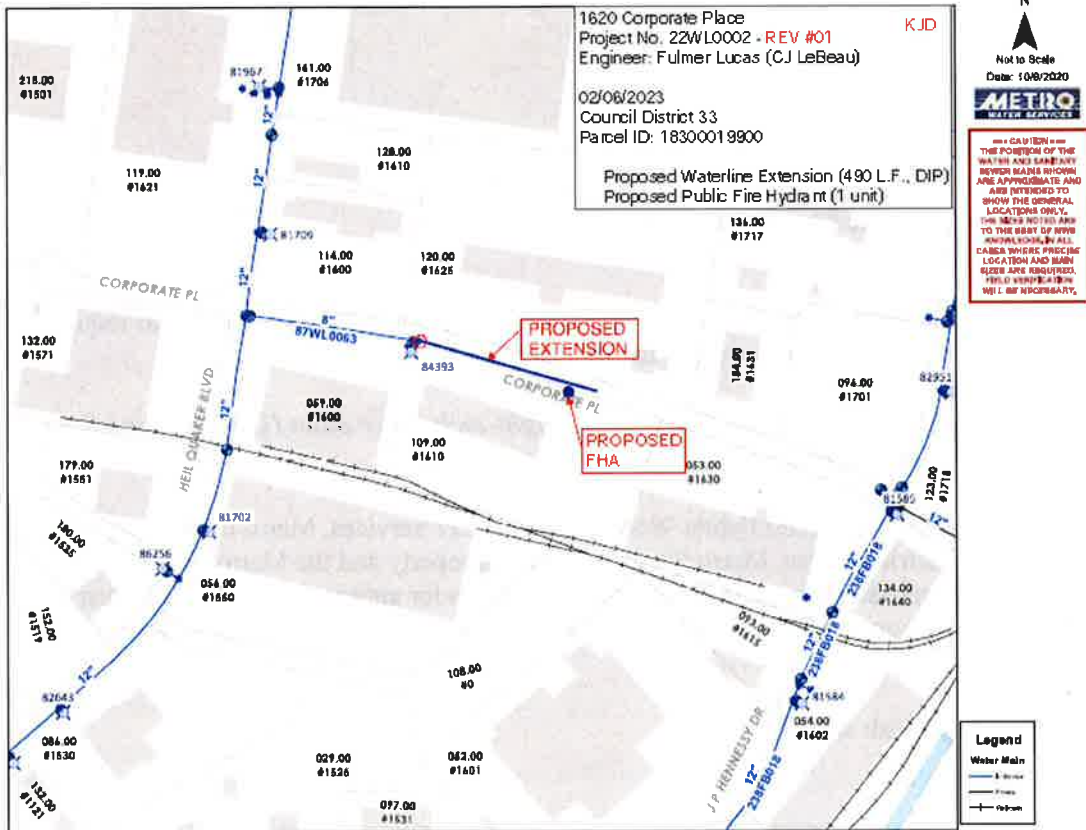
Sincerely,

A handwritten signature in blue ink that reads 'Lisa Milligan'.

Lisa Milligan
Land Development Manager
Metro Planning Department
cc: *Metro Clerk*

Re: 1620 CORPORATE PLACE
Planning Commission Mandatory Referral # 2023M-026ES-001
Council District #33 Antoinette Lee, Council Member

A request for the acceptance of approximately 490 linear feet of eight-inch water main (DIP) and one fire hydrant assembly to serve the development at 1620 Corporate Place.



1620 Corporate Place
Project No. 22WL0002 - REV #01
Engineer: Fulmer Lucas (CJ LeBeau)

KJD

02/06/2023
Council District 33
Parcel ID: 18300019900

Proposed Waterline Extension (490 L.F., DIP)
Proposed Public Fire Hydrant (1 unit)

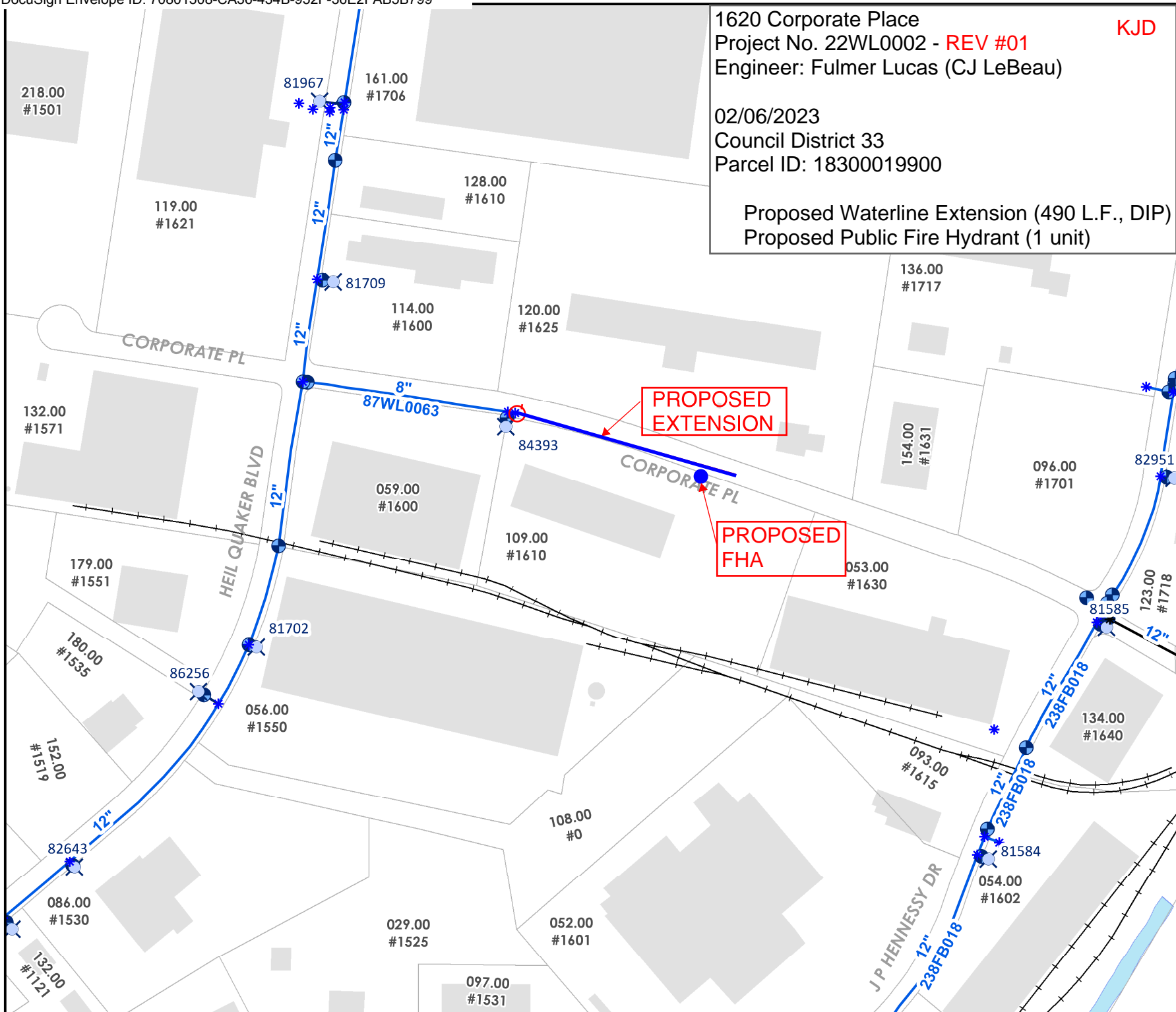
N



Not to Scale
Date: 10/9/2020



--- CAUTION ---
THE POSITION OF THE
WATER AND SANITARY
SEWER MAINS SHOWN
ARE APPROXIMATE AND
ARE INTENDED TO
SHOW THE GENERAL
LOCATIONS ONLY.
THE SIZES NOTED ARE
TO THE BEST OF MWS
KNOWLEDGE. IN ALL
CASES WHERE PRECISE
LOCATION AND MAIN
SIZES ARE REQUIRED,
FIELD VERIFICATION
WILL BE NECESSARY.



Legend

- Water Main
 - In Service (blue line)
 - Private (black line)
 - Railroads (black line with cross-ticks)