



May 23, 2024

To: Mike Atchison Metro Water Services

**Re: Rosebrooke Section 4B
Planning Commission Mandatory Referral 2024M-072ES-001**

On behalf of the Metropolitan Planning Commission, the following item, referred to the Commission as required by the Metro Charter, has been recommended for *approval* to the Metropolitan Council:

A request for the acceptance of approximately 610 linear feet of eight-inch sanitary sewer mains (PVC), four sanitary sewer manholes, and easements to serve the Rosebrooke Section 4B development.

The relevant Metro agencies (Metro Parks, Nashville Department of Transportation, Metro Water Services, Metro Emergency Communications, the Nashville Electric Service, Metro Finance – Public Property and the Metro Historical Commission) have reviewed the proposal and concur in the recommendation for approval. This request must be approved by the Metro Council to become effective. A sketch showing the location of the request is attached to this letter.

Conditions that apply to this approval: none

This recommendation for approval is given as set forth in the Metropolitan Planning Commission Rules and Procedures. If you have any questions about this matter, please contact Delilah Rhodes at Delilah.Rhodes@nashville.gov or 615-862-7208

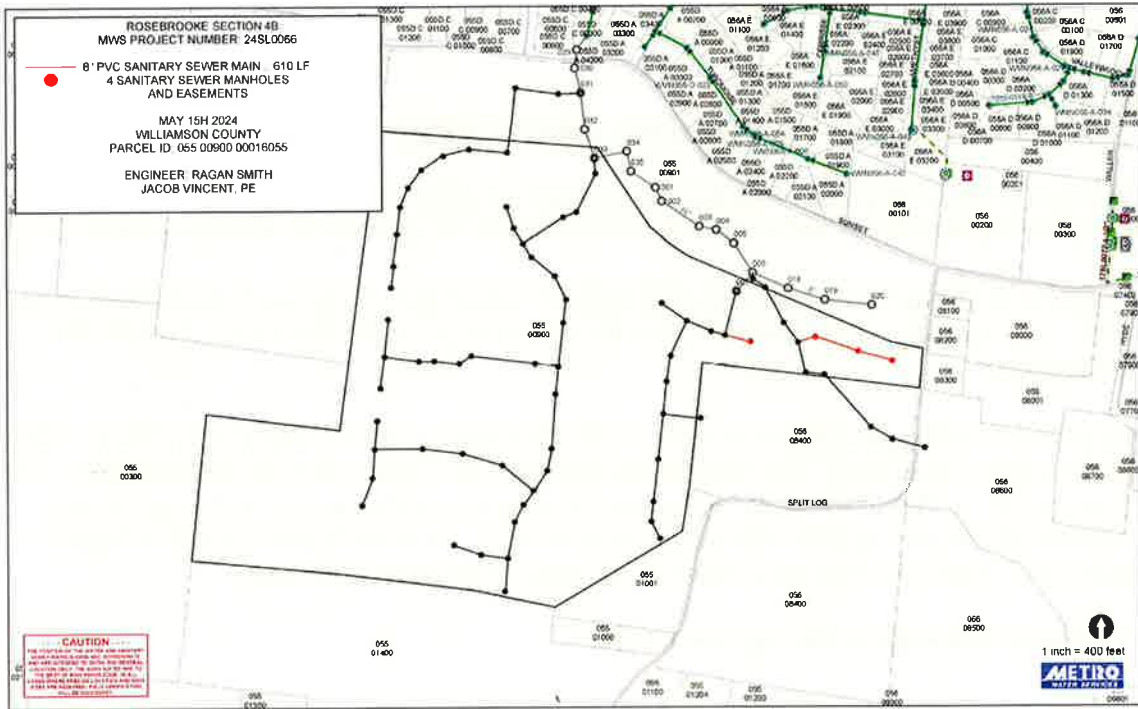
Sincerely,

A handwritten signature in black ink that reads "Lisa Milligan". The signature is written in a cursive, flowing style.

Lisa Milligan
Assistant Director Land Development
Metro Planning Department
cc: *Metro Clerk*

**Re: Rosebrooke Section 4B
Planning Commission Mandatory Referral 2024M-072ES-001**

A request for the acceptance of approximately 610 linear feet of eight-inch sanitary sewer mains (PVC), four sanitary sewer manholes, and easements to serve the Rosebrooke Section 4B development.

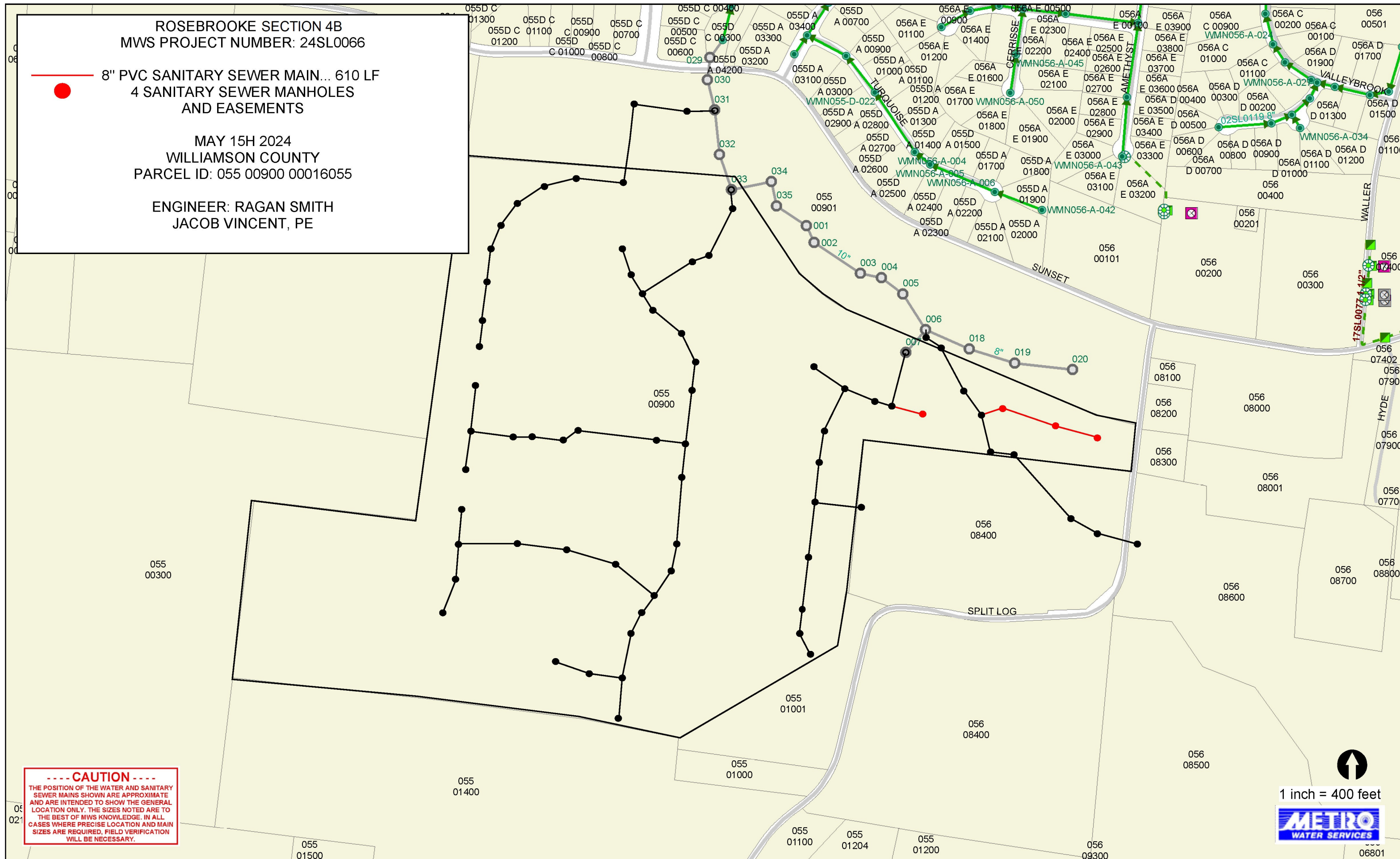


ROSEBROOKE SECTION 4B
MWS PROJECT NUMBER: 24SL0066

8" PVC SANITARY SEWER MAIN... 610 LF
4 SANITARY SEWER MANHOLES
AND EASEMENTS

MAY 15H 2024
WILLIAMSON COUNTY
PARCEL ID: 055 00900 00016055

ENGINEER: RAGAN SMITH
JACOB VINCENT, PE



----- CAUTION -----
THE POSITION OF THE WATER AND SANITARY SEWER MAINS SHOWN ARE APPROXIMATE AND ARE INTENDED TO SHOW THE GENERAL LOCATION ONLY. THE SIZES NOTED ARE TO THE BEST OF MWS KNOWLEDGE. IN ALL CASES WHERE PRECISE LOCATION AND MAIN SIZES ARE REQUIRED, FIELD VERIFICATION WILL BE NECESSARY.

1 inch = 400 feet