



**METROPOLITAN GOVERNMENT
OF NASHVILLE AND DAVIDSON COUNTY**

Planning Department
Metro Office Building
800 Second Avenue South
Nashville, Tennessee 37201

May 9, 2022

To: Mike Atchison, Public Metro Water

**Re: BLUE HOLE RESIDENTIAL DEVELOPMENT
Planning Commission Mandatory Referral #2022M-071ES-001
Council District #31– John Rutherford, Council Member**

On behalf of the Metropolitan Planning Commission, the following item, referred to the Commission as required by the Metro Charter, has been recommended for *approval* to the Metropolitan Council:

A request for the acceptance of approximately 778 linear feet of 8-inch sanitary sewer main (PVC), 148 linear feet of 8-inch sanitary sewer main encased in 16-inch steel pipe (DIP), five sanitary sewer manholes, one fire hydrant assembly and easement to serve the Blue Hole Residential development. Requested by Metro Water, Intuition Development, LLC, owner.

The relevant Metro agencies (Metro Parks, Metro Public Works, Metro Water Services, Metro Emergency Communications, the Nashville Electric Service, Metro Finance – Public Property and the Metro Historical Commission) have reviewed the proposal and concur in the recommendation for approval. This request must be approved by the Metro Council to become effective. A sketch showing the location of the request is attached to this letter.

Conditions that apply to this approval: none

This recommendation for approval is given as set forth in the Metropolitan Planning Commission Rules and Procedures. If you have any questions about this matter, please contact Delilah Rhodes at delilah.rhodes@nashville.gov or 615-862-7208.

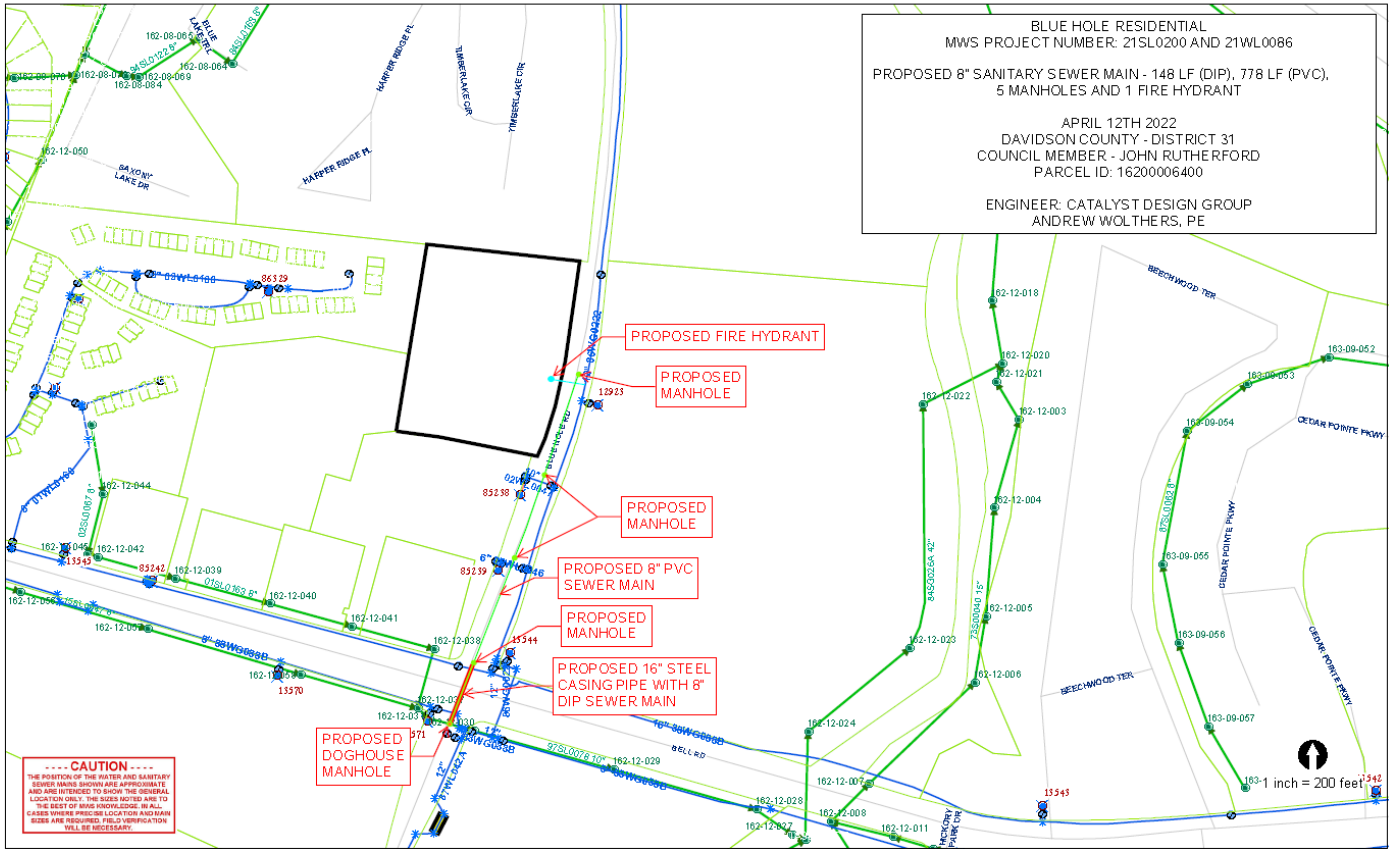
Sincerely,

A handwritten signature in cursive script that reads "Robert Leeman".

Robert Leeman
Deputy Director
Metro Planning Department
cc: *Metro Clerk*

Re: BLUE HOLE RESIDENTIAL DEVELOPMENT
Planning Commission Mandatory Referral #2022M-071ES-001
Council District #31– John Rutherford, Council Member

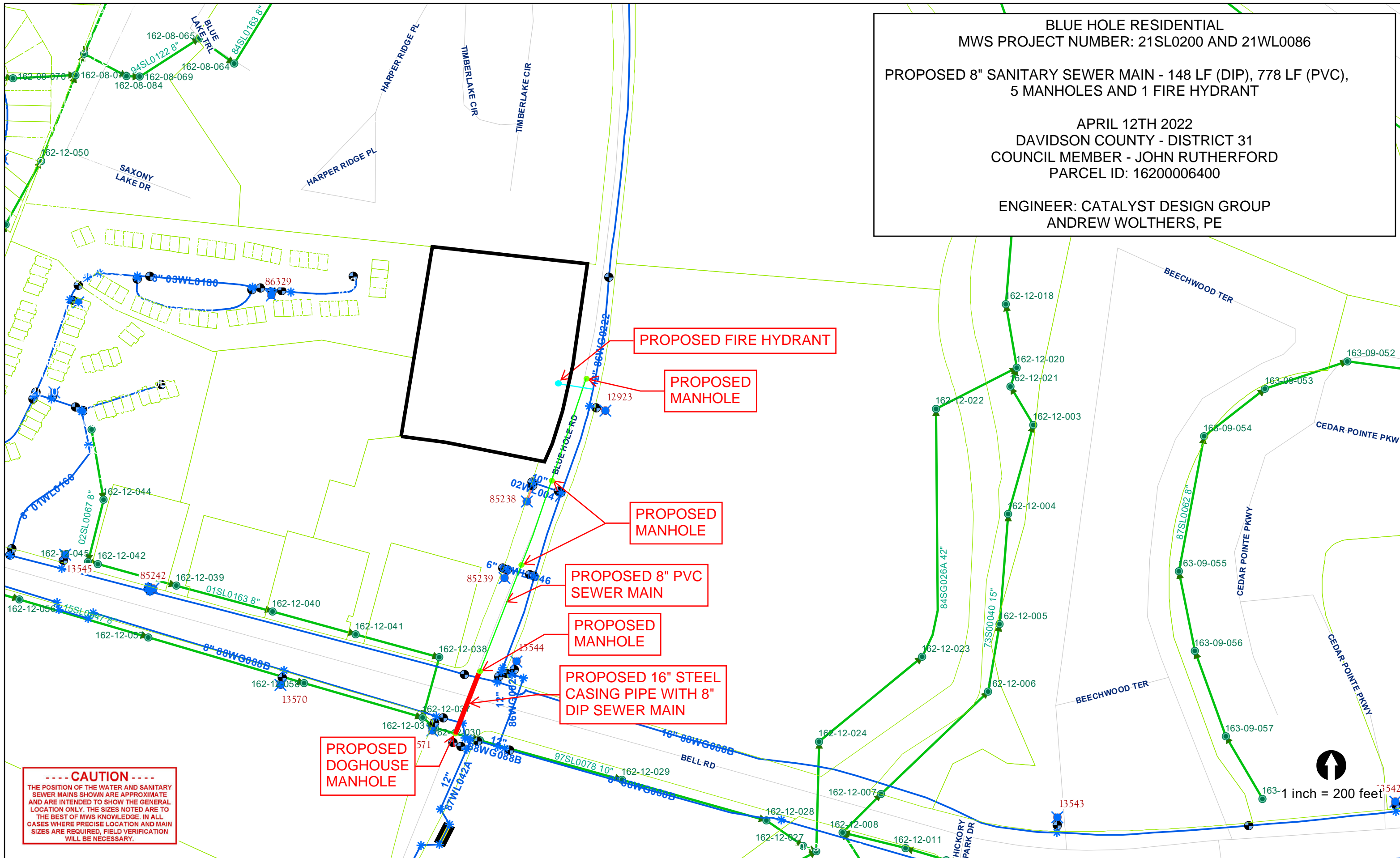
A request for the acceptance of approximately 778 linear feet of 8-inch sanitary sewer main (PVC), 148 linear feet of 8-inch sanitary sewer main encased in 16-inch steel pipe (DIP), five sanitary sewer manholes, one fire hydrant assembly and easement to serve the Blue Hole Residential development. Requested by Metro Water, Intuition Development, LLC, owner.



BLUE HOLE RESIDENTIAL
MWS PROJECT NUMBER: 21SL0200 AND 21WL0086
PROPOSED 8" SANITARY SEWER MAIN - 148 LF (DIP), 778 LF (PVC),
5 MANHOLES AND 1 FIRE HYDRANT

APRIL 12TH 2022
DAVIDSON COUNTY - DISTRICT 31
COUNCIL MEMBER - JOHN RUTHERFORD
PARCEL ID: 16200006400

ENGINEER: CATALYST DESIGN GROUP
ANDREW WOLTERS, PE



-----CAUTION-----
THE POSITION OF THE WATER AND SANITARY SEWER MAINS SHOWN ARE APPROXIMATE AND ARE INTENDED TO SHOW THE GENERAL LOCATION ONLY. THE SIZES NOTED ARE TO THE BEST OF MWS KNOWLEDGE. IN ALL CASES WHERE PRECISE LOCATION AND MAIN SIZES ARE REQUIRED, FIELD VERIFICATION WILL BE NECESSARY.