



**METROPOLITAN GOVERNMENT  
OF NASHVILLE AND DAVIDSON COUNTY**

Planning Department  
Metro Office Building  
800 Second Avenue South  
Nashville, Tennessee 37201

May 23, 2022

To: Stephanie James, Public Metro Water

**Re: WILLIAMS PITTS AVENUE STORAGE  
Planning Commission Mandatory Referral #2022M-079ES-001  
Council District #11 Larry Hager, Council Member**

On behalf of the Metropolitan Planning Commission, the following item, referred to the Commission as required by the Metro Charter, has been recommended for *approval* to the Metropolitan Council:

*A request for abandonment of approximately 35 linear feet of eight-inch sewer main (PVC), the abandonment of two sanitary sewer manholes, and the acceptance of one sanitary sewer manhole to serve the Williams Pitts Avenue Storage development.*

The relevant Metro agencies (Metro Parks, Metro Public Works, Metro Water Services, Metro Emergency Communications, the Nashville Electric Service, Metro Finance – Public Property and the Metro Historical Commission) have reviewed the proposal and concur in the recommendation for approval. This request must be approved by the Metro Council to become effective. A sketch showing the location of the request is attached to this letter.

**Conditions that apply to this approval: none**

This recommendation for approval is given as set forth in the Metropolitan Planning Commission Rules and Procedures. If you have any questions about this matter, please contact Delilah Rhodes at [delilah.rhodes@nashville.gov](mailto:delilah.rhodes@nashville.gov) or 615-862-7208.

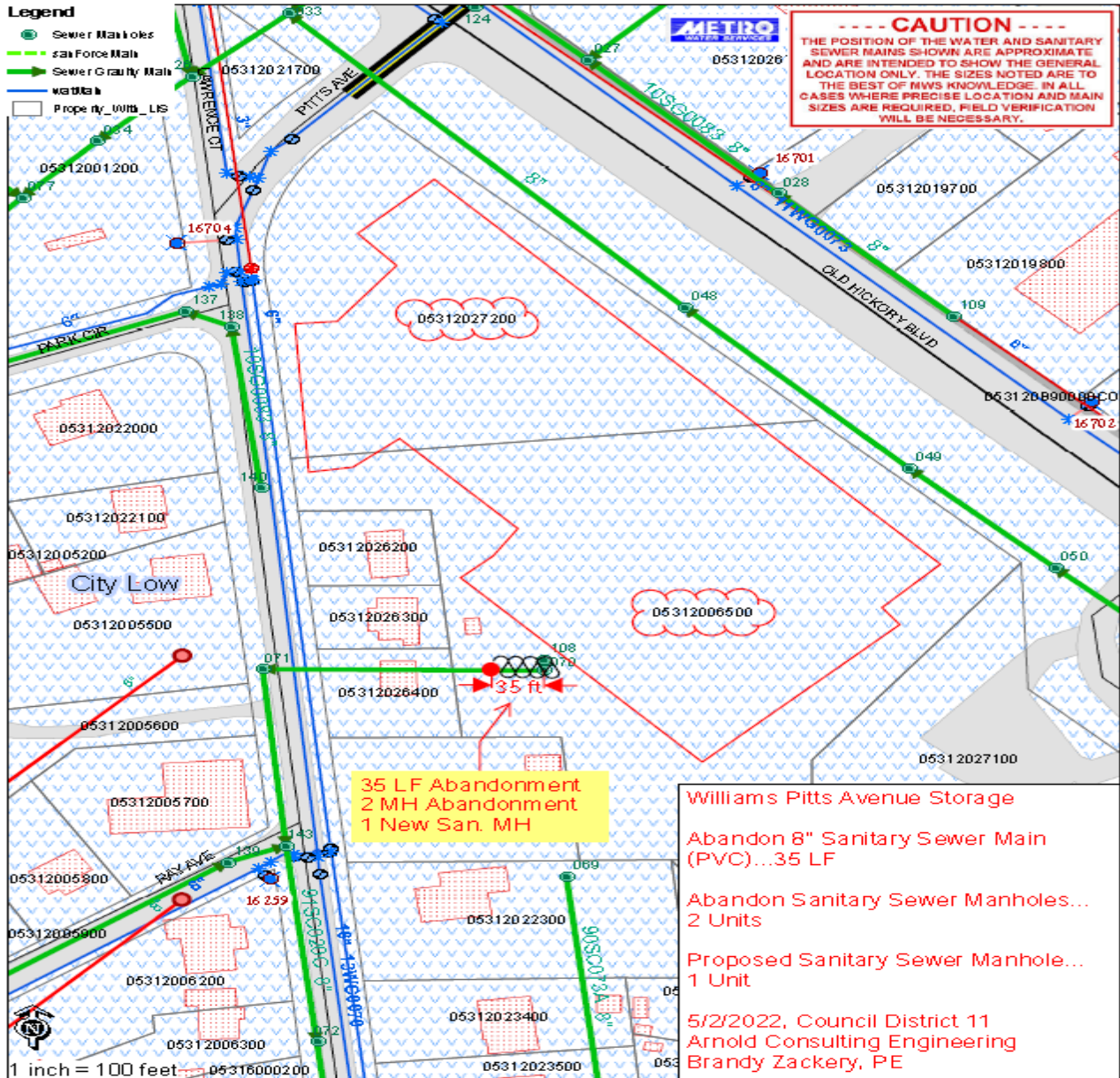
Sincerely,

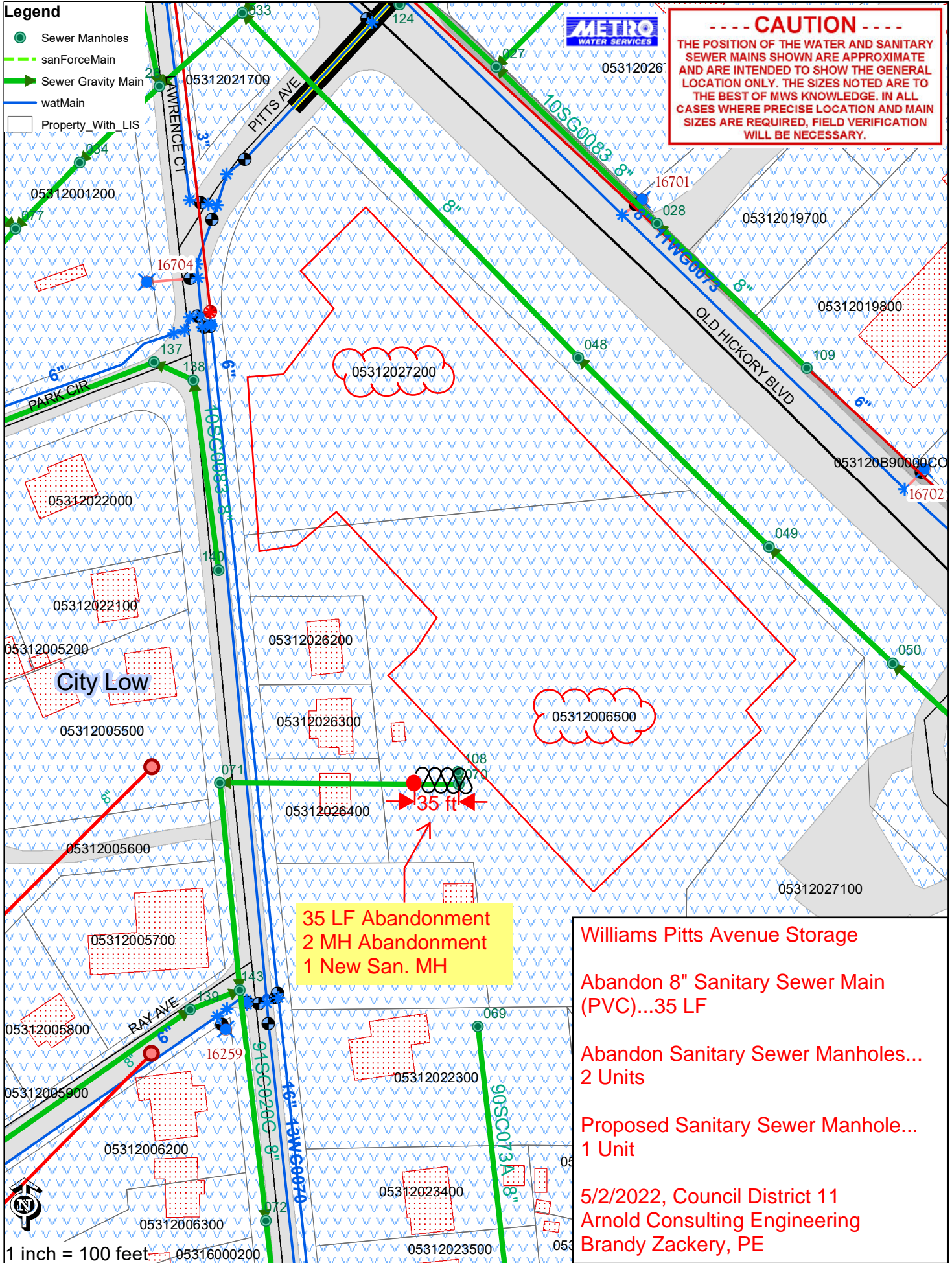
A handwritten signature in black ink that reads 'Robert Leeman'.

Robert Leeman  
Deputy Director  
Metro Planning Department  
cc: *Metro Clerk*

**Re: WILLIAMS PITTS AVENUE STORAGE**  
**Planning Commission Mandatory Referral #2022M-079ES-001**  
**Council District #11 Larry Hager, Council Member**

*A request for abandonment of approximately 35 linear feet of eight-inch sewer main (PVC), the abandonment of two sanitary sewer manholes, and the acceptance of one sanitary sewer manhole to serve the Williams Pitts Avenue Storage development.*





**Legend**

- Sewer Manholes
- sanForceMain
- Sewer Gravity Main
- watMain
- Property With LIS



**----- CAUTION -----**

THE POSITION OF THE WATER AND SANITARY SEWER MAINS SHOWN ARE APPROXIMATE AND ARE INTENDED TO SHOW THE GENERAL LOCATION ONLY. THE SIZES NOTED ARE TO THE BEST OF MWS KNOWLEDGE. IN ALL CASES WHERE PRECISE LOCATION AND MAIN SIZES ARE REQUIRED, FIELD VERIFICATION WILL BE NECESSARY.

35 LF Abandonment  
2 MH Abandonment  
1 New San. MH

**Williams Pitts Avenue Storage**

Abandon 8" Sanitary Sewer Main (PVC)...35 LF

Abandon Sanitary Sewer Manholes... 2 Units

Proposed Sanitary Sewer Manhole... 1 Unit

5/2/2022, Council District 11  
Arnold Consulting Engineering  
Brandy Zackery, PE

1 inch = 100 feet