



**METROPOLITAN GOVERNMENT OF NASHVILLE
AND DAVIDSON COUNTY**

Metro Office Building
800 President Ronald Reagan Way
P.O. Box 196300
Nashville, TN 37219-6300

November 2, 2022

To: Stephanie James, Metro Water Services

**Re: 1010 CHURCH STREET DEVELOPMENT
Planning Commission Mandatory Referral #2022M-165ES-001
Council District #19 Freddie O'Connell, Council Member**

On behalf of the Metropolitan Planning Commission, the following item, referred to the Commission as required by the Metro Charter, has been recommended for *approval* to the Metropolitan Council:

A request for the acceptance of 111 linear feet of eight-inch water main (DIP), approximately 28 linear feet of 12-inch sanitary sewer main (DIP) and one sanitary sewer manhole to serve the development at 1010 Church Street.

The relevant Metro agencies (Metro Parks, Metro Public Works, Metro Water Services, Metro Emergency Communications, the Nashville Electric Service, Metro Finance – Public Property and the Metro Historical Commission) have reviewed the proposal and concur in the recommendation for approval. This request must be approved by the Metro Council to become effective. A sketch showing the location of the request is attached to this letter.

Conditions that apply to this approval: none

This recommendation for approval is given as set forth in the Metropolitan Planning Commission Rules and Procedures. If you have any questions about this matter, please contact Delilah Rhodes at delilah.rhodes@nashville.gov or 615-862-7208.

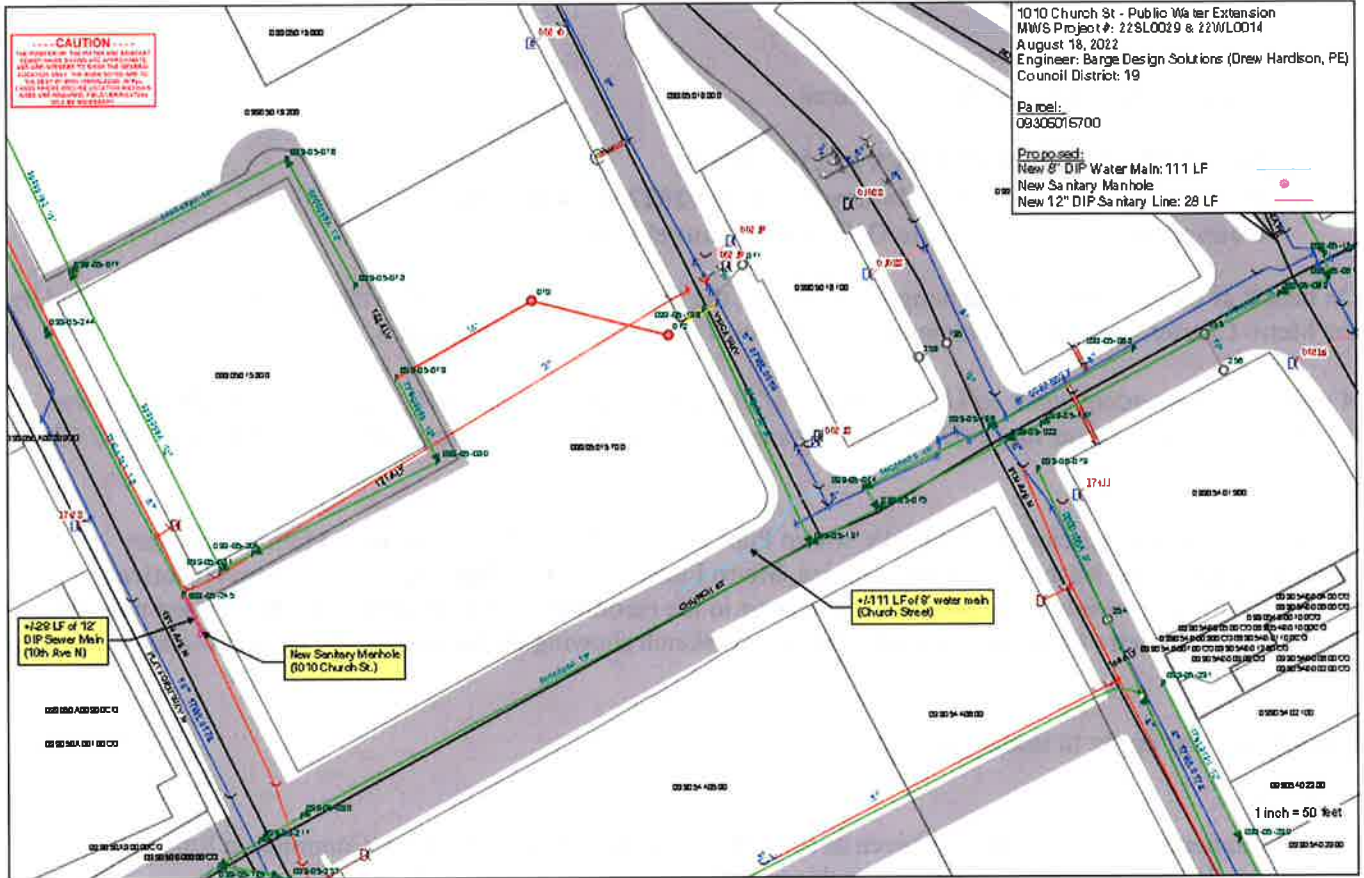
Sincerely,

A handwritten signature in blue ink, appearing to read "Lisa Milligan".

Lisa Milligan
Land Development Manager
Metro Planning Department
cc: Metro Clerk

Re: 1010 CHURCH STREET DEVELOPMENT
Planning Commission Mandatory Referral #2022M-165ES-001
Council District #19 Freddie O'Connell, Council Member

A request for the acceptance of 111 linear feet of eight-inch water main (DIP), approximately 28 linear feet of 12-inch sanitary sewer main (DIP) and one sanitary sewer manhole to serve the development at 1010 Church Street.

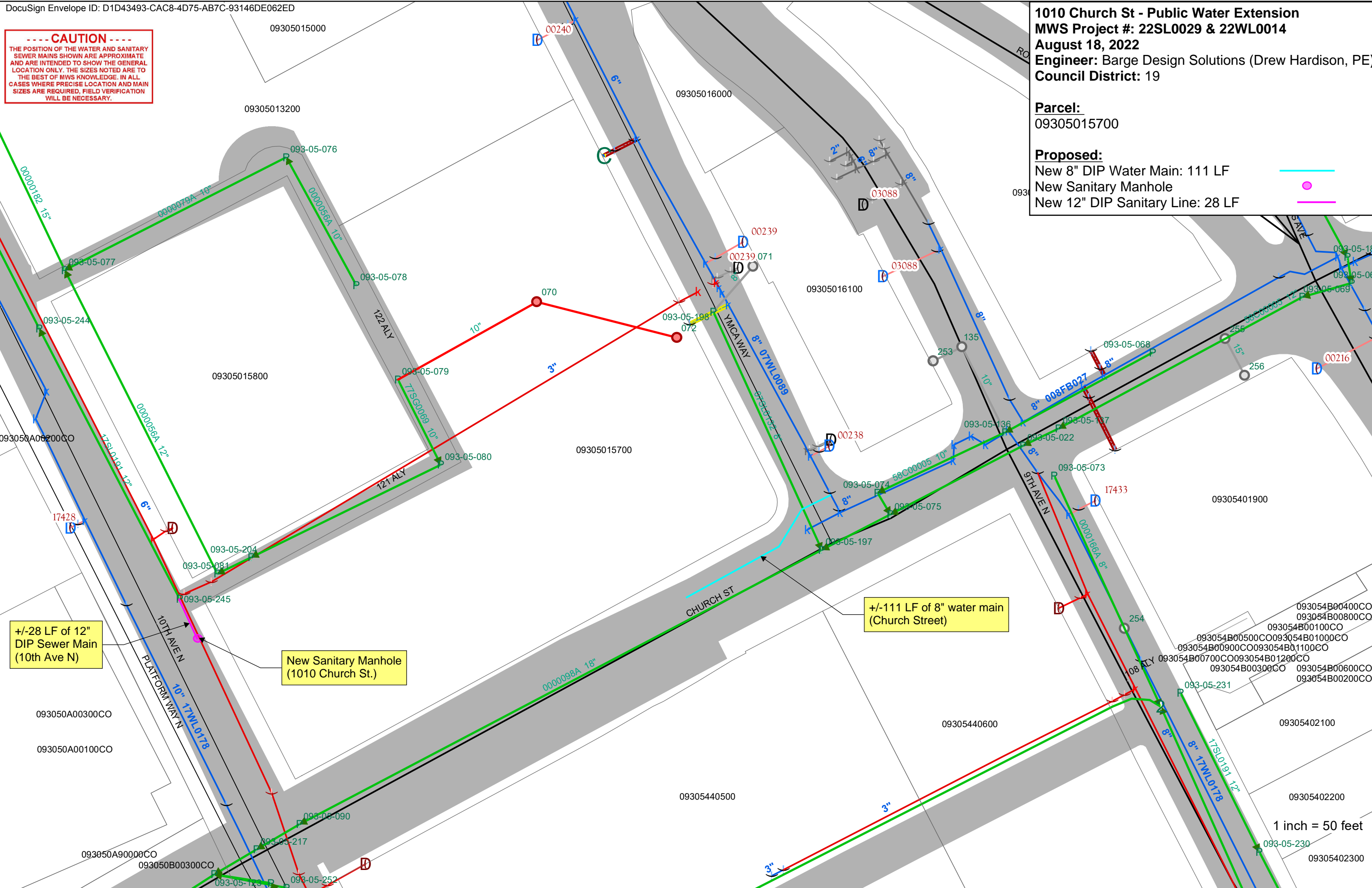
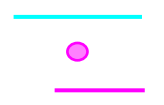


-----CAUTION-----
THE POSITION OF THE WATER AND SANITARY SEWER MAINS SHOWN ARE APPROXIMATE AND ARE INTENDED TO SHOW THE GENERAL LOCATION ONLY. THE SIZES NOTED ARE TO THE BEST OF MWS KNOWLEDGE. IN ALL CASES WHERE PRECISE LOCATION AND MAIN SIZES ARE REQUIRED, FIELD VERIFICATION WILL BE NECESSARY.

1010 Church St - Public Water Extension
MWS Project #: 22SL0029 & 22WL0014
August 18, 2022
Engineer: Barge Design Solutions (Drew Hardison, PE)
Council District: 19

Parcel:
09305015700

Proposed:
New 8" DIP Water Main: 111 LF
New Sanitary Manhole
New 12" DIP Sanitary Line: 28 LF



+/-28 LF of 12" DIP Sewer Main (10th Ave N)

New Sanitary Manhole (1010 Church St.)

+/-111 LF of 8" water main (Church Street)

1 inch = 50 feet

093050A00300CO
093050A00100CO

093050A90000CO
093050B00300CO

093054B00400CO
093054B00800CO
093054B00100CO
093054B00500CO
093054B00900CO
093054B00700CO
093054B00300CO
093054B01000CO
093054B01100CO
093054B01200CO
093054B00600CO
093054B00200CO

09305402100

09305402200

09305402300

09305013200

09305016000

09305016100

09305015800

09305015700

09305401900

093050A00200CO

09305440600

09305440500

093050A90000CO

093050B00300CO

09305402300