



**METROPOLITAN GOVERNMENT OF NASHVILLE
AND DAVIDSON COUNTY**

Metro Office Building
800 President Ronald Reagan Way
P.O. Box 196300
Nashville, TN 37219-6300

May 3, 2023

To: Stephanie James Metro Water Services

**Re: EDGE O LAKE SANITARY SEWER IMPROVEMENT
Planning Commission Mandatory Referral # 2023M-049ES-001
Council District #29 Delishia Porterfield, Council Member**

On behalf of the Metropolitan Planning Commission, the following item, referred to the Commission as required by the Metro Charter, has been recommended for *approval* to the Metropolitan Council:

A request for the acceptance of 788 linear feet of 15-inch sanitary sewer main (PVC) and the adjustment of four sanitary sewer manholes to serve the Edge O Lake Sanitary Sewer Improvement.

The relevant Metro agencies (Metro Parks, Metro Public Works, Metro Water Services, Metro Emergency Communications, the Nashville Electric Service, Metro Finance – Public Property and the Metro Historical Commission) have reviewed the proposal and concur in the recommendation for approval. This request must be approved by the Metro Council to become effective. A sketch showing the location of the request is attached to this letter.

Conditions that apply to this approval: none

This recommendation for approval is given as set forth in the Metropolitan Planning Commission Rules and Procedures. If you have any questions about this matter, please contact Delilah Rhodes at delilah.rhodes@nashville.gov or 615-862-7208.

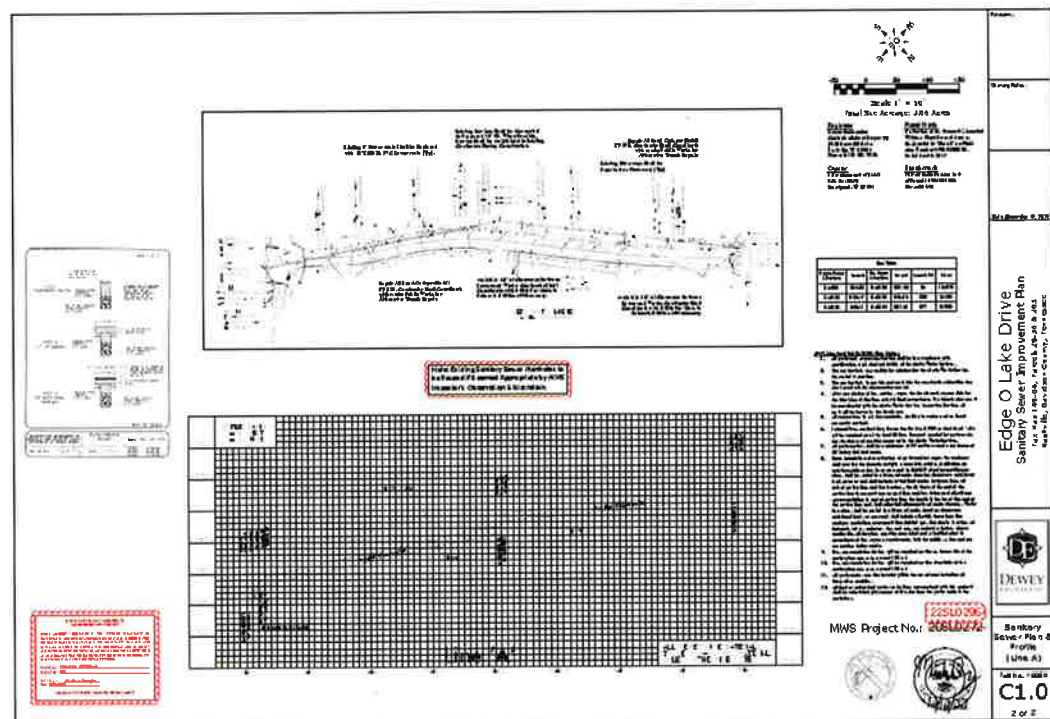
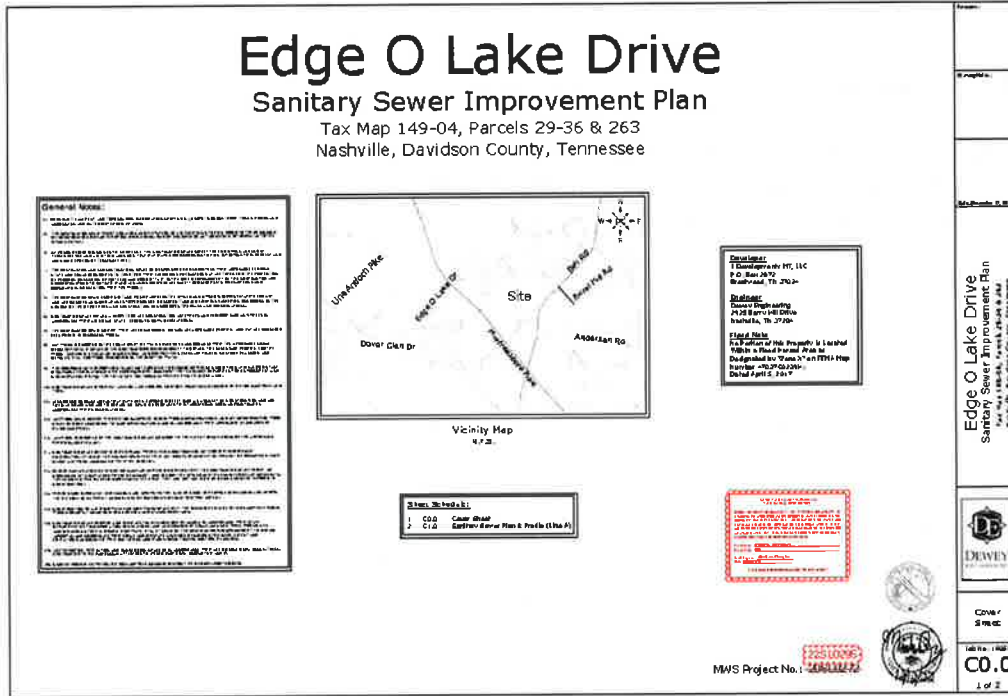
Sincerely,

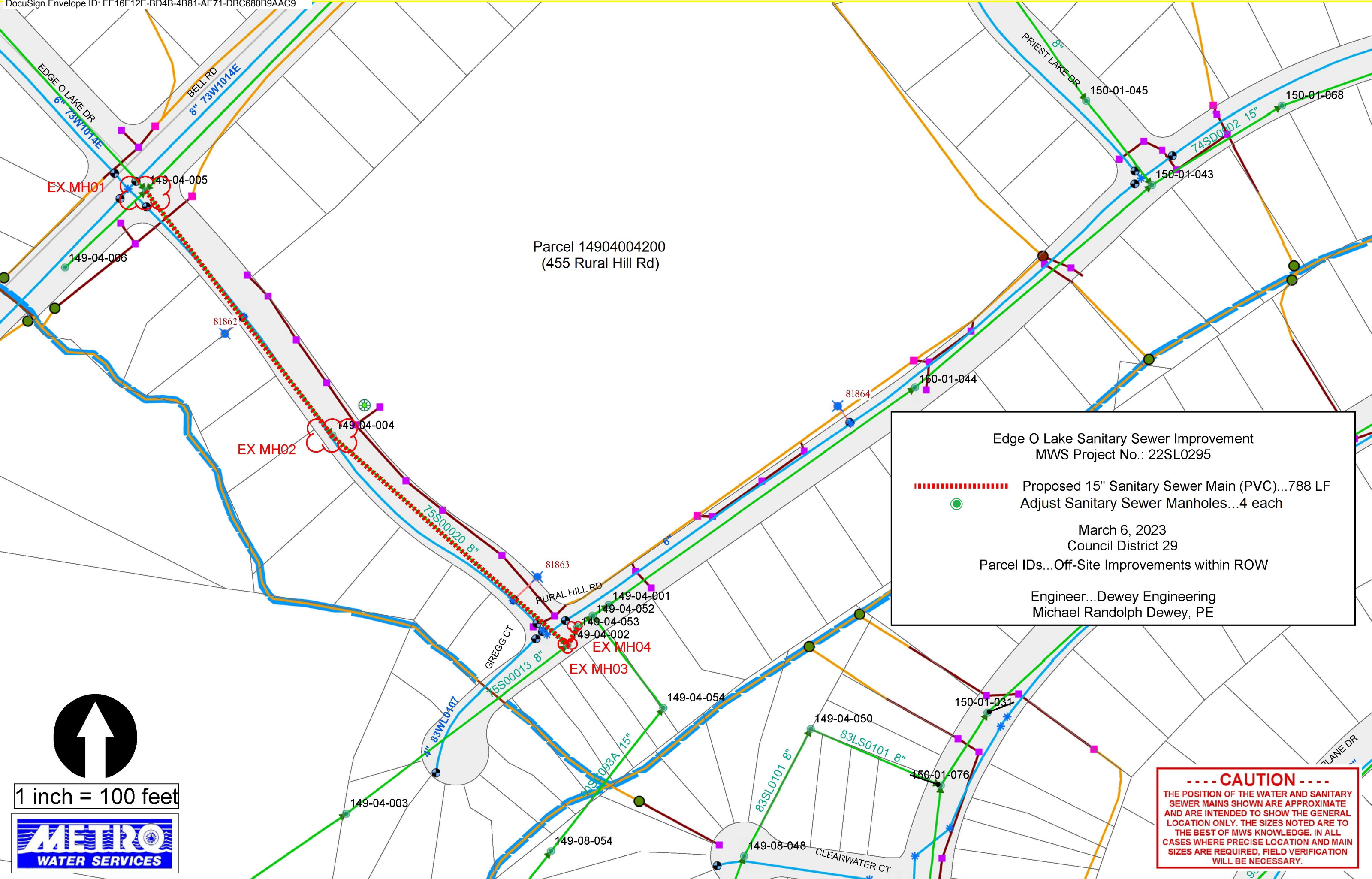
A handwritten signature in blue ink that reads 'Lisa Milligan'.

Lisa Milligan
Land Development Manager
Metro Planning Department
cc: *Metro Clerk*

**Re: EDGE O LAKE SANITARY SEWER IMPROVEMENT
 Planning Commission Mandatory Referral # 2023M-049ES-001
 Council District #29 Delishia Porterfield, Council Member**

A request for the acceptance of 788 linear feet of 15-inch sanitary sewer main (PVC) and the adjustment of four sanitary sewer manholes to serve the Edge O Lake Sanitary Sewer Improvement.





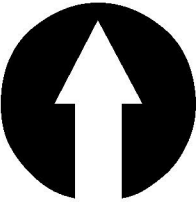
Parcel 14904004200
(455 Rural Hill Rd)

Edge O Lake Sanitary Sewer Improvement
MWS Project No.: 22SL0295

----- Proposed 15" Sanitary Sewer Main (PVC)...788 LF
Adjust Sanitary Sewer Manholes...4 each

March 6, 2023
Council District 29
Parcel IDs...Off-Site Improvements within ROW

Engineer...Dewey Engineering
Michael Randolph Dewey, PE



1 inch = 100 feet



-----CAUTION-----

THE POSITION OF THE WATER AND SANITARY SEWER MAINS SHOWN ARE APPROXIMATE AND ARE INTENDED TO SHOW THE GENERAL LOCATION ONLY. THE SIZES NOTED ARE TO THE BEST OF MWS KNOWLEDGE. IN ALL CASES WHERE PRECISE LOCATION AND MAIN SIZES ARE REQUIRED, FIELD VERIFICATION WILL BE NECESSARY.