



October 19, 2023

To: George Reagan Metro Water Services

Re: **50 MUSIC SQUARE WEST**  
**Planning Commission Mandatory Referral 2023M-161ES-001**  
**Council District #17 Terry Vo, Council Member**

On behalf of the Metropolitan Planning Commission, the following item, referred to the Commission as required by the Metro Charter, has been recommended for *approval* to the Metropolitan Council:

*A request for the acceptance of one sanitary sewer manhole to serve the 50 Music Square West development.*

The relevant Metro agencies (Metro Parks, Metro Public Works, Metro Water Services, Metro Emergency Communications, the Nashville Electric Service, Metro Finance – Public Property and the Metro Historical Commission) have reviewed the proposal and concur in the recommendation for approval. This request must be approved by the Metro Council to become effective. A sketch showing the location of the request is attached to this letter.

**Conditions that apply to this approval: none**

This recommendation for approval is given as set forth in the Metropolitan Planning Commission Rules and Procedures. If you have any questions about this matter, please contact Christopher Paulsen at [Christopher.paulsen@nashville.gov](mailto:Christopher.paulsen@nashville.gov) or 615-880-2452.

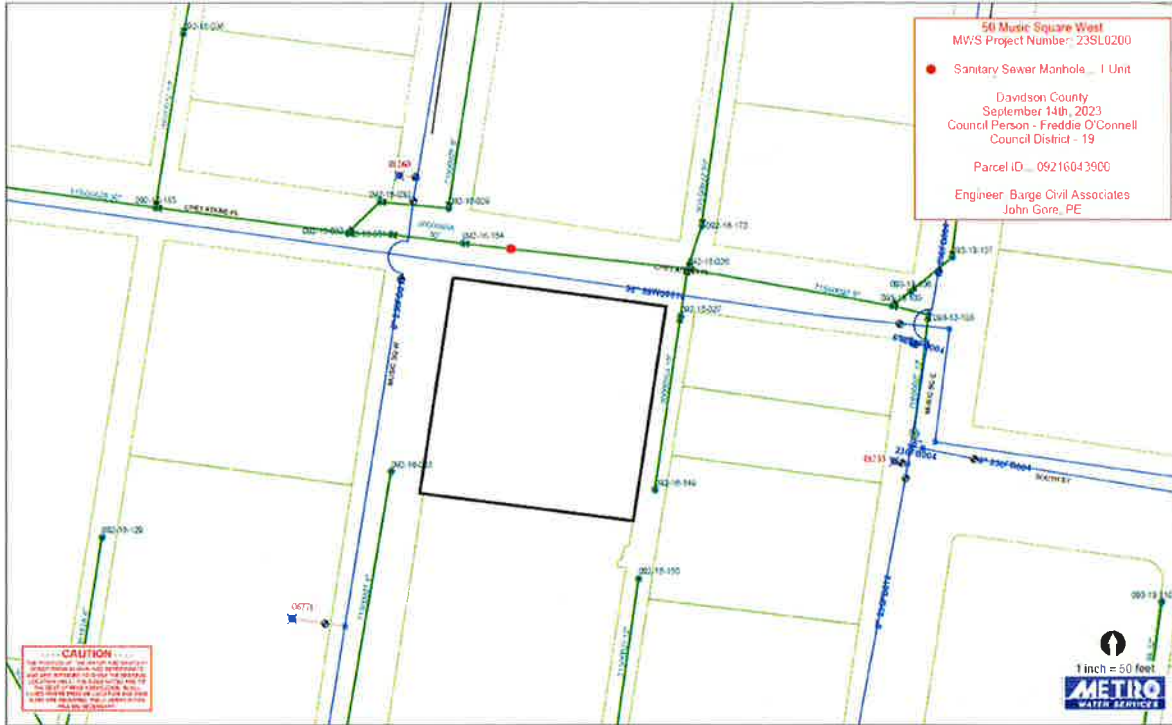
Sincerely,

A handwritten signature in blue ink, appearing to read "Lisa Milligan".

Lisa Milligan  
Assistant Director Land Development  
Metro Planning Department  
cc: *Metro Clerk*

**Re: 50 MUSIC SQUARE WEST**  
**Planning Commission Mandatory Referral 2023M-161ES-001**  
**Council District #17 Terry Vo, Council Member**

*A request for the acceptance of one sanitary sewer manhole to serve the 50 Music Square West development.*



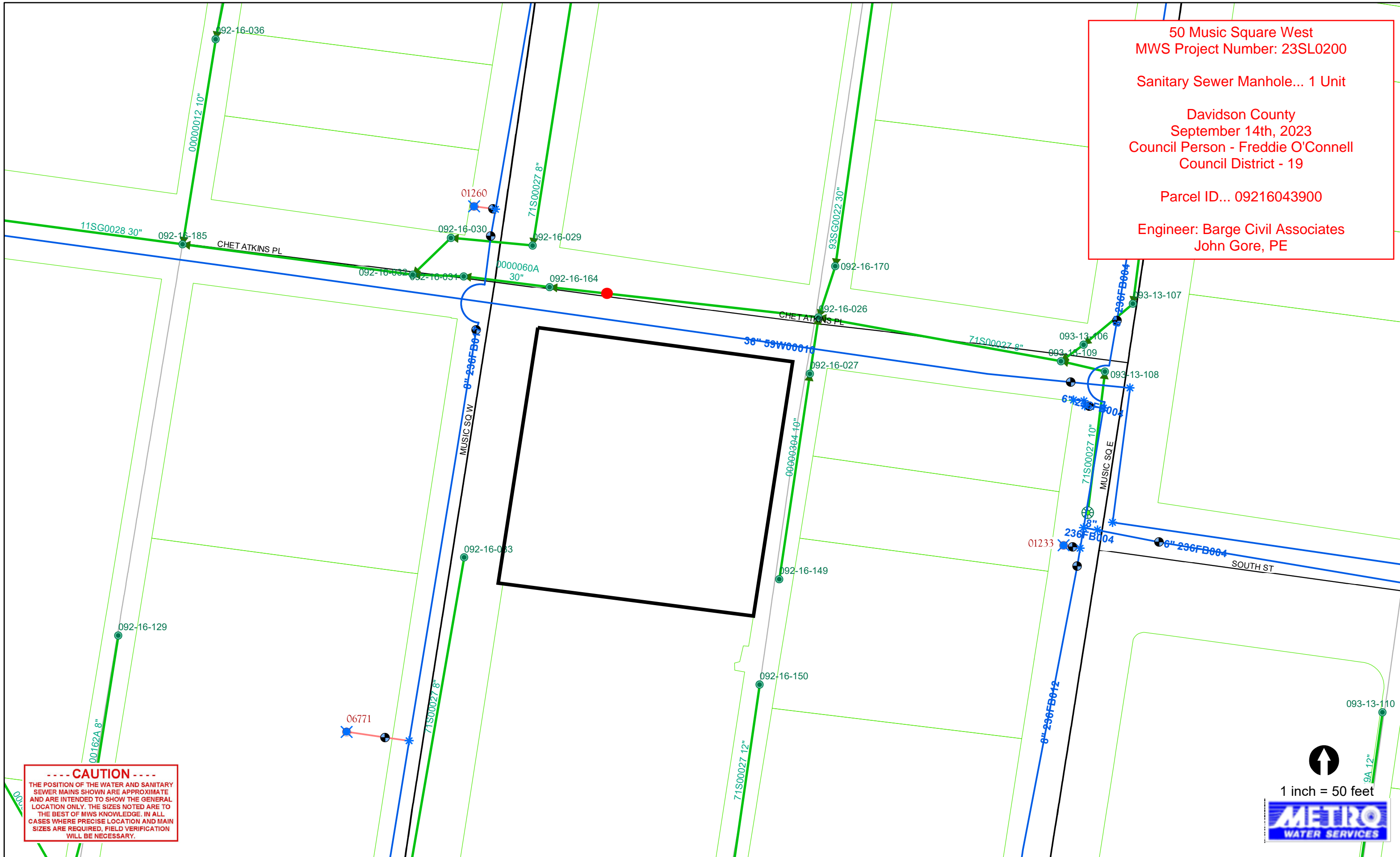
50 Music Square West  
 MWS Project Number: 23SL0200

Sanitary Sewer Manhole... 1 Unit

Davidson County  
 September 14th, 2023  
 Council Person - Freddie O'Connell  
 Council District - 19

Parcel ID... 09216043900

Engineer: Barge Civil Associates  
 John Gore, PE



----- CAUTION -----  
 THE POSITION OF THE WATER AND SANITARY SEWER MAINS SHOWN ARE APPROXIMATE AND ARE INTENDED TO SHOW THE GENERAL LOCATION ONLY. THE SIZES NOTED ARE TO THE BEST OF MWS KNOWLEDGE. IN ALL CASES WHERE PRECISE LOCATION AND MAIN SIZES ARE REQUIRED, FIELD VERIFICATION WILL BE NECESSARY.

1 inch = 50 feet