



December 12, 2023

To: Mike Atchison Metro Water Services

**Re: Clarendale West End  
Planning Commission Mandatory Referral 2023M-193ES-001  
Council District #24 Brenda Gadd, Council Member**

On behalf of the Metropolitan Planning Commission, the following item, referred to the Commission as required by the Metro Charter, has been recommended for *approval* to the Metropolitan Council:

*A request for the abandonment of approximately 81 linear feet of eight-inch sanitary sewer mains (PVC) and two sanitary sewer manholes and the acceptance of approximately 197 linear feet of eight-inch sanitary sewer mains (PVC) and 78 linear feet of eight-inch sanitary sewer mains (DIP), five sanitary sewer manholes, 834 linear feet of 8-inch water main (DIP), and one fire hydrant assembly for the Clarendale West End development. All construction will occur in public road rights of way.*

The relevant Metro agencies (Metro Parks, Metro Public Works, Metro Water Services, Metro Emergency Communications, the Nashville Electric Service, Metro Finance – Public Property and the Metro Historical Commission) have reviewed the proposal and concur in the recommendation for approval. This request must be approved by the Metro Council to become effective. A sketch showing the location of the request is attached to this letter.

**Conditions that apply to this approval: none**

This recommendation for approval is given as set forth in the Metropolitan Planning Commission Rules and Procedures. If you have any questions about this matter, please contact Delilah Rhodes at [Delilah.Rhodes@nashville.gov](mailto:Delilah.Rhodes@nashville.gov) or 615-862-7208

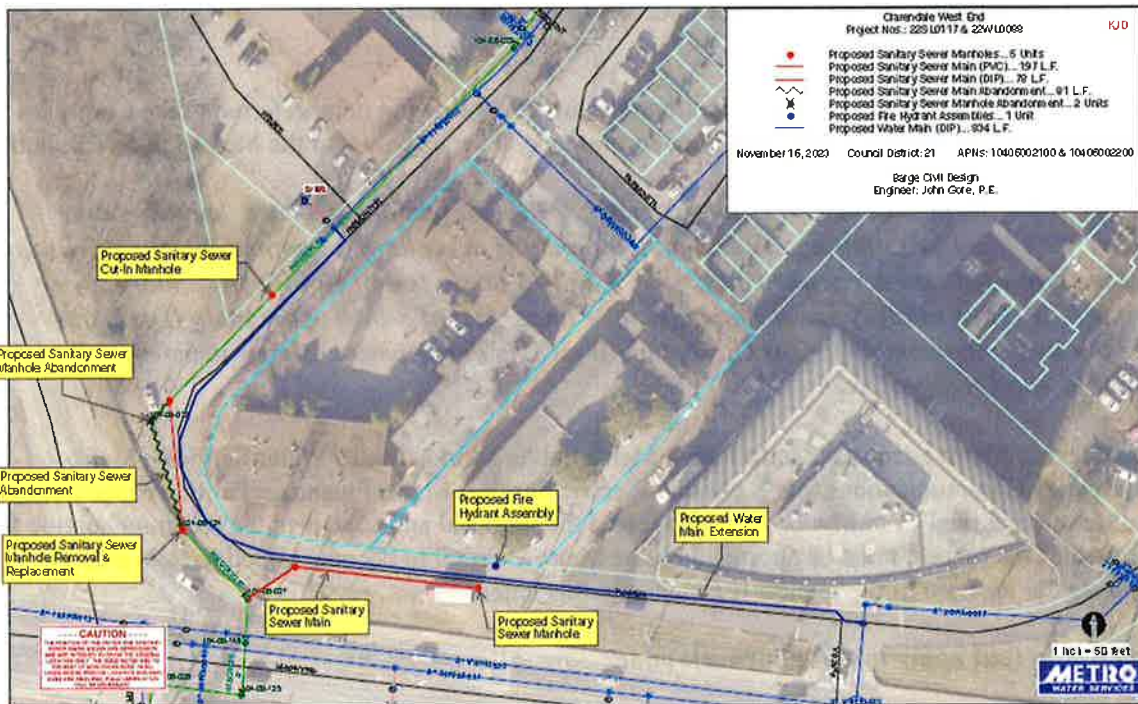
Sincerely,

A handwritten signature in blue ink that reads "Lisa Milligan".

Lisa Milligan  
Assistant Director Land Development  
Metro Planning Department  
cc: Metro Clerk

**Re: Clarendale West End  
Planning Commission Mandatory Referral 2023M-193ES-001  
Council District #24 Brenda Gadd, Council Member**

*A request for the abandonment of approximately 81 linear feet of eight-inch sanitary sewer mains (PVC) and two sanitary sewer manholes and the acceptance of approximately 197 linear feet of eight-inch sanitary sewer mains (PVC) and 78 linear feet of eight-inch sanitary sewer mains (DIP), five sanitary sewer manholes, 834 linear feet of 8-inch water main (DIP), and one fire hydrant assembly for the Clarendale West End development. All construction will occur in public road rights of way.*





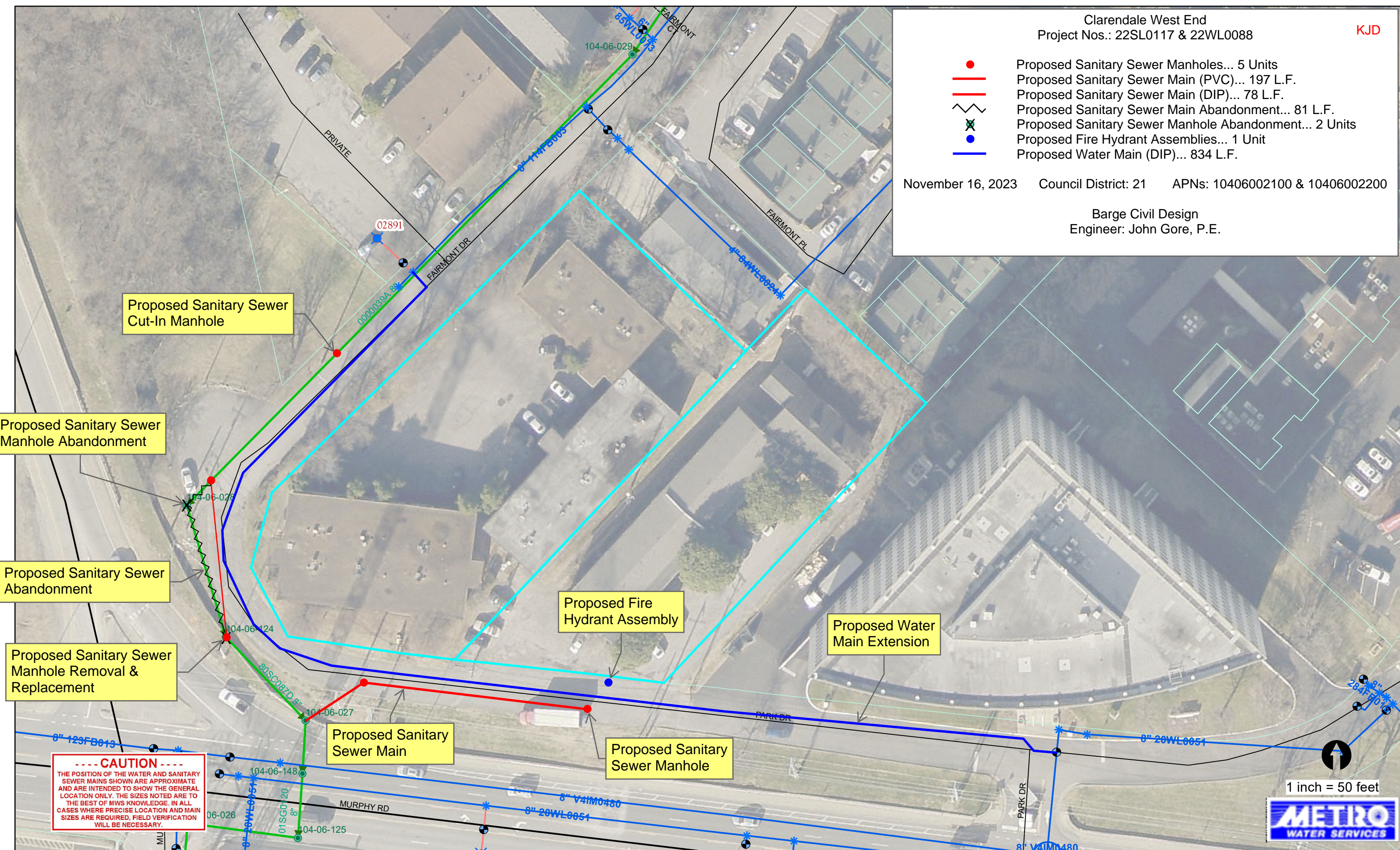
Clarendale West End  
Project Nos.: 22SL0117 & 22WL0088

KJD

- Proposed Sanitary Sewer Manholes... 5 Units
- Proposed Sanitary Sewer Main (PVC)... 197 L.F.
- Proposed Sanitary Sewer Main (DIP)... 78 L.F.
- - - Proposed Sanitary Sewer Main Abandonment... 81 L.F.
- ✕ Proposed Sanitary Sewer Manhole Abandonment... 2 Units
- Proposed Fire Hydrant Assemblies... 1 Unit
- Proposed Water Main (DIP)... 834 L.F.

November 16, 2023 Council District: 21 APNs: 10406002100 & 10406002200

Barge Civil Design  
Engineer: John Gore, P.E.



Proposed Sanitary Sewer Cut-In Manhole

Proposed Sanitary Sewer Manhole Abandonment

Proposed Sanitary Sewer Abandonment

Proposed Sanitary Sewer Manhole Removal & Replacement

Proposed Fire Hydrant Assembly

Proposed Water Main Extension

Proposed Sanitary Sewer Main

Proposed Sanitary Sewer Manhole

**----- CAUTION -----**  
 THE POSITION OF THE WATER AND SANITARY SEWER MAINS SHOWN ARE APPROXIMATE AND ARE INTENDED TO SHOW THE GENERAL LOCATION ONLY. THE SIZES NOTED ARE TO THE BEST OF MWS KNOWLEDGE. IN ALL CASES WHERE PRECISE LOCATION AND MAIN SIZES ARE REQUIRED, FIELD VERIFICATION WILL BE NECESSARY.

1 inch = 50 feet

