

**7-ELEVEN STORE  
PROJECT NO. 21-SL-238  
Parcel List**

<b><u>Address</u></b>	<b><u>Map/Parcels</u></b>	<b><u>Property Owners</u></b>
921 Lebanon Pike	09410000200	Octane Partners Lebfess, LLC
925 Lebanon Pike	09410000300	Octane Partners Lebfess, LLC
929 Lebanon Pike	09410000400	Octane Partners Lebfess, LLC
931 Lebanon Pike	09410000500	Octane Partners Lebfess, LLC
0 White Avenue	09410005100	Octane Partners Lebfess, LLC
0 White Avenue	09410005200	Octane Partners Lebfess, LLC
0 White Avenue	09414000200	Octane Partners Lebfess, LLC
110 Rucker Avenue	09410005300	Octane Partners Lebfess, LLC



**METROPOLITAN GOVERNMENT  
OF NASHVILLE AND DAVIDSON COUNTY**

Planning Department  
Metro Office Building  
800 Second Avenue South  
Nashville, Tennessee 37201

April 29, 2022

To: Mike Atchison, Public Metro Water

**Re: 7-ELEVEN STORE PROJECT NO. 21-SL-238  
Planning Commission Mandatory Referral #2022M-072ES-001  
Council District #19– Freddie O’Connell, Council Member**

On behalf of the Metropolitan Planning Commission, the following item, referred to the Commission as required by the Metro Charter, has been recommended for *approval* to the Metropolitan Council:

*A request for the abandonment of approximately 250 linear feet of 8-inch sanitary sewer main (VCP), one sanitary sewer manhole, and the easement rights of Alley #2058, previously retained by Ordinance BL2021-649. Also, the project includes the rehabilitation of approximately 175 linear feet of 8-inch sanitary sewer main (VCP) with inner pipe lining and rehabilitation of two sanitary sewer manholes. Requested by Metro Water, applicant; Octane Partners Lebfess, LLC, owner.*

The relevant Metro agencies (Metro Parks, Metro Public Works, Metro Water Services, Metro Emergency Communications, the Nashville Electric Service, Metro Finance – Public Property and the Metro Historical Commission) have reviewed the proposal and concur in the recommendation for approval. This request must be approved by the Metro Council to become effective. A sketch showing the location of the request is attached to this letter.

**Conditions that apply to this approval: none**

This recommendation for approval is given as set forth in the Metropolitan Planning Commission Rules and Procedures. If you have any questions about this matter, please contact Delilah Rhodes at [delilah.rhodes@nashville.gov](mailto:delilah.rhodes@nashville.gov) or 615-862-7208.

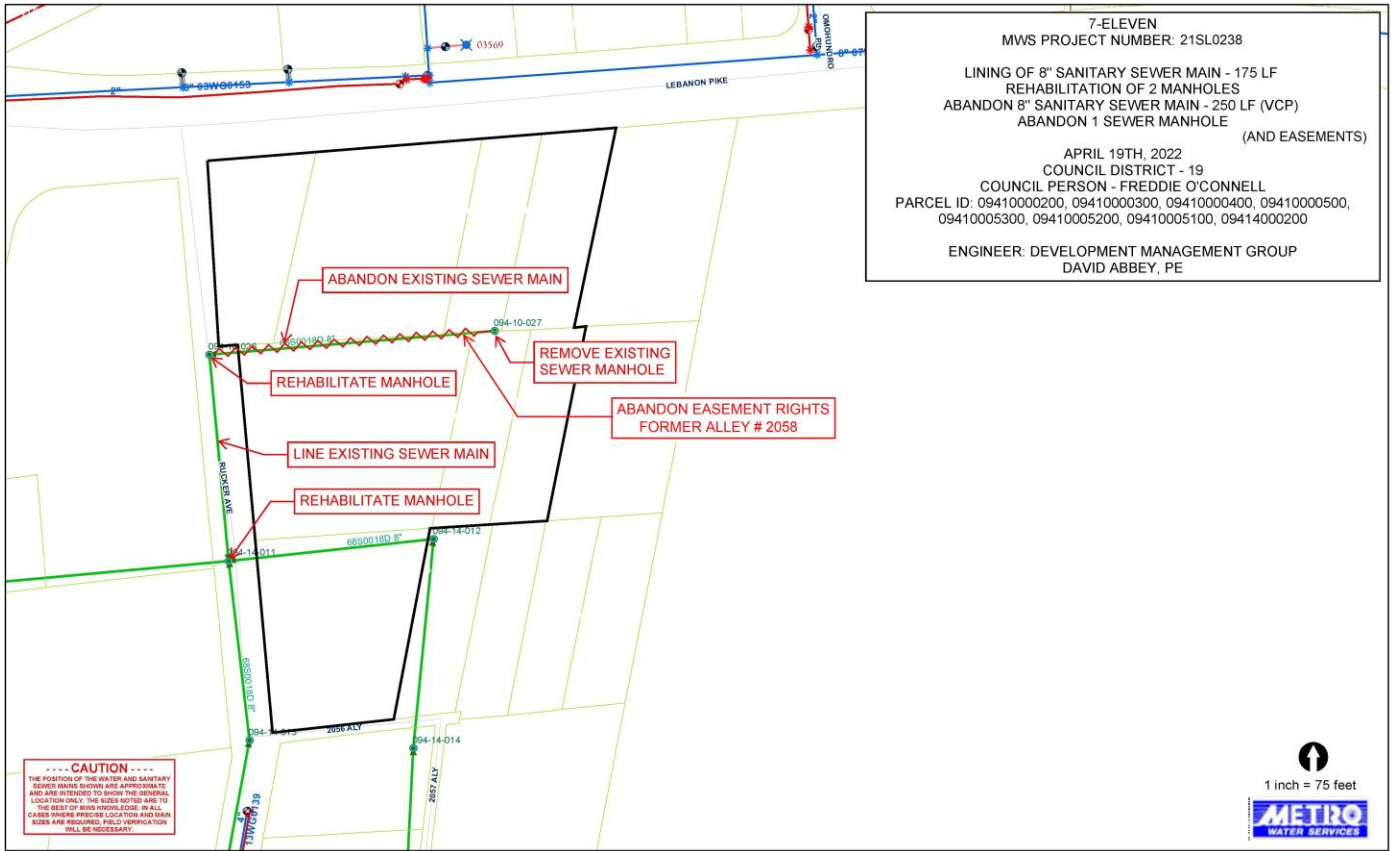
Sincerely,

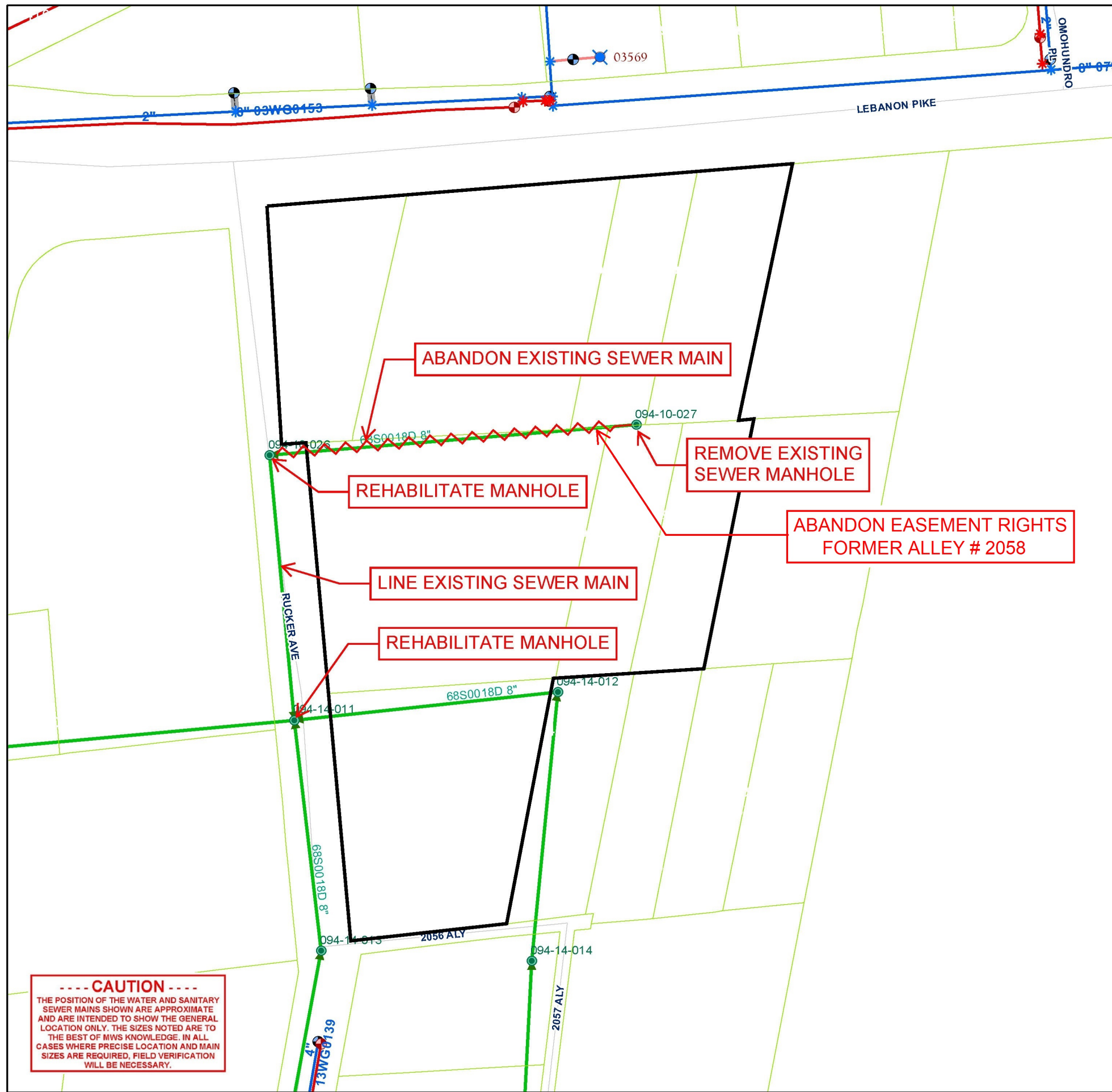
A handwritten signature in black ink that reads 'Robert Leeman'.

Robert Leeman  
Deputy Director  
Metro Planning Department  
cc: *Metro Clerk*

**Re: 7-ELEVEN STORE PROJECT NO. 21-SL-238**  
**Planning Commission Mandatory Referral #2022M-072ES-001**  
**Council District #19- Freddie O'Connell, Council Member**

A request for the abandonment of approximately 250 linear feet of 8-inch sanitary sewer main (VCP), one sanitary sewer manhole, and the easement rights of Alley #2058, previously retained by Ordinance BL2021-649. Also, the project includes the rehabilitation of approximately 175 linear feet of 8-inch sanitary sewer main (VCP) with inner pipe lining and rehabilitation of two sanitary sewer manholes. Requested by Metro Water, applicant; Octane Partners Lebfess, LLC, owner. ).





7-ELEVEN  
 MWS PROJECT NUMBER: 21SL0238

LINING OF 8" SANITARY SEWER MAIN - 175 LF  
 REHABILITATION OF 2 MANHOLES  
 ABANDON 8" SANITARY SEWER MAIN - 250 LF (VCP)  
 ABANDON 1 SEWER MANHOLE  
 (AND EASEMENTS)

APRIL 19TH, 2022  
 COUNCIL DISTRICT - 19  
 COUNCIL PERSON - FREDDIE O'CONNELL  
 PARCEL ID: 09410000200, 09410000300, 09410000400, 09410000500,  
 09410005300, 09410005200, 09410005100, 09414000200

ENGINEER: DEVELOPMENT MANAGEMENT GROUP  
 DAVID ABBEY, PE

ABANDON EXISTING SEWER MAIN

REHABILITATE MANHOLE

REMOVE EXISTING SEWER MANHOLE

ABANDON EASEMENT RIGHTS FORMER ALLEY # 2058

LINE EXISTING SEWER MAIN

REHABILITATE MANHOLE

----- CAUTION -----  
 THE POSITION OF THE WATER AND SANITARY SEWER MAINS SHOWN ARE APPROXIMATE AND ARE INTENDED TO SHOW THE GENERAL LOCATION ONLY. THE SIZES NOTED ARE TO THE BEST OF MWS KNOWLEDGE. IN ALL CASES WHERE PRECISE LOCATION AND MAIN SIZES ARE REQUIRED, FIELD VERIFICATION WILL BE NECESSARY.

