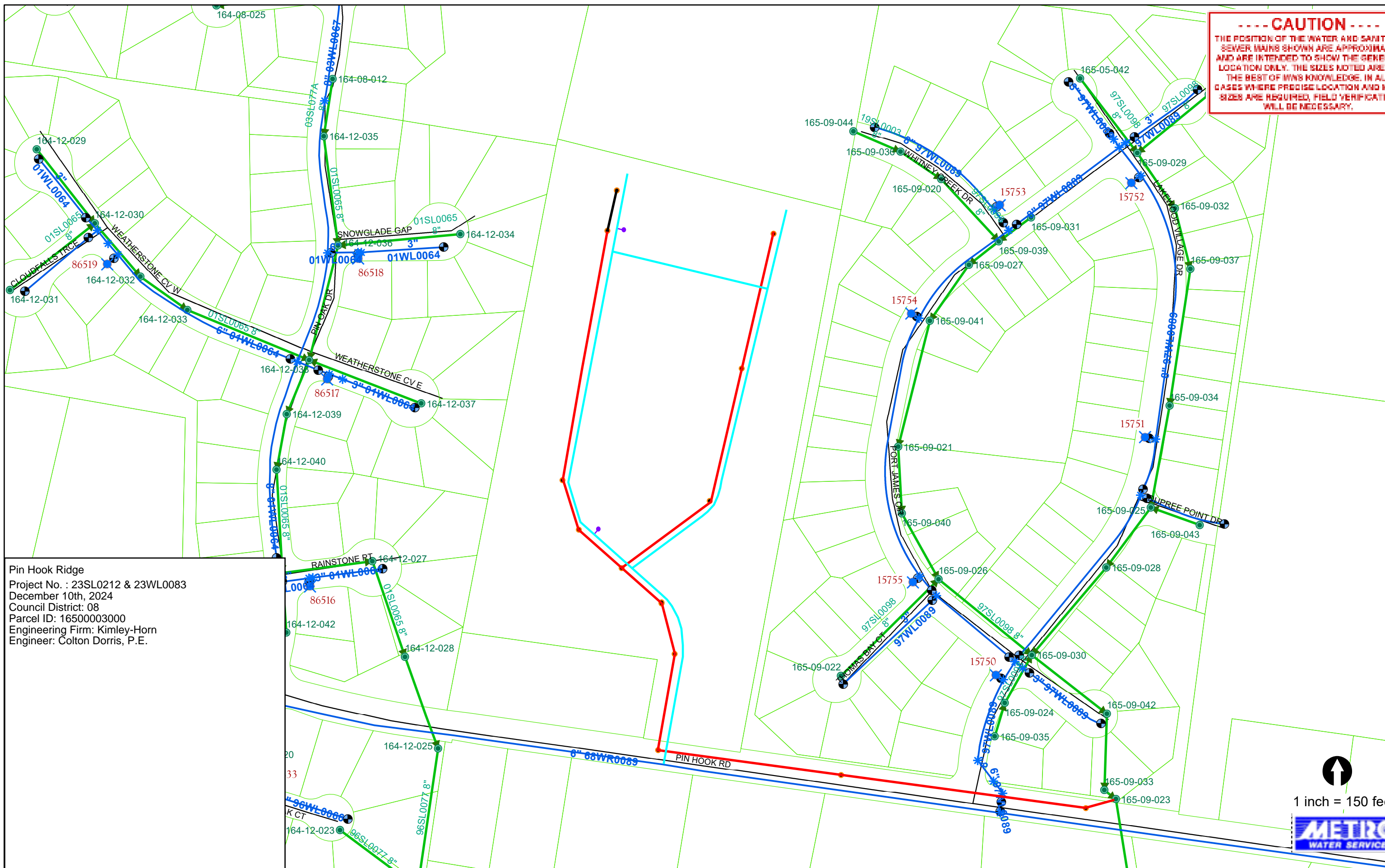


----- CAUTION -----
THE POSITION OF THE WATER AND SANITARY SEWER MAINS SHOWN ARE APPROXIMATE AND ARE INTENDED TO SHOW THE GENERAL LOCATION ONLY. THE SIZES NOTED ARE TO THE BEST OF MWS KNOWLEDGE. IN ALL CASES WHERE PRECISE LOCATION AND MAIN SIZES ARE REQUIRED, FIELD VERIFICATION WILL BE NECESSARY.



Pin Hook Ridge
Project No. : 23SL0212 & 23WL0083
December 10th, 2024
Council District: 08
Parcel ID: 16500003000
Engineering Firm: Kimley-Horn
Engineer: Colton Dorris, P.E.

1 inch = 150 feet

N A S H V I L L E
P L A N N I N G

January 7, 2025

To: George Reagan Metro Water Services

Re: **Pin Hook Ridge**
Planning Commission Mandatory Referral 2024M-155ES-001
Council District # 08 Deonté Harrell , Council Member

On behalf of the Metropolitan Planning Commission, the following item, referred to the Commission as required by the Metro Charter, has been recommended for *approval* to the Metropolitan Council:

A request for the acceptance of approximately 100 linear feet of 8-inch sanitary sewer line (DIP), 943 linear feet of 8-inch sanitary sewer line (PVC SDR-26), 1,377 linear feet of 8-inch sanitary sewer line (PVC SDR-36), 13 sanitary sewer manholes, 1,890 LF of 8-inch water main (DIP), and two fire hydrant assemblies; to serve the Pin Hook Ridge development.

The relevant Metro agencies (Metro Parks, Nashville Department of Transportation, Metro Water Services, Metro Emergency Communications, the Nashville Electric Service, Metro Finance – Public Property and the Metro Historical Commission) have reviewed the proposal and concur in the recommendation for approval. This request must be approved by the Metro Council to become effective. A sketch showing the location of the request is attached to this letter.

Conditions that apply to this approval: none

This recommendation for approval is given as set forth in the Metropolitan Planning Commission Rules and Procedures. If you have any questions about this matter, please contact Delilah Rhodes at Delilah.Rhodes@nashville.gov or 615-862-7208

Sincerely,



Lisa Milligan
Assistant Director Land Development
Metro Planning Department
cc: *Metro Clerk*

**Re: Pin Hook Ridge
Planning Commission Mandatory Referral 2024M-155ES-001
Council District # 08 Deonté Harrell, Council Member**

A request for the acceptance of approximately 100 linear feet of 8-inch sanitary sewer line (DIP), 943 linear feet of 8-inch sanitary sewer line (PVC SDR-26), 1,377 linear feet of 8-inch sanitary sewer line (PVC SDR-36), 13 sanitary sewer manholes, 1,890 LF of 8-inch water main (DIP), and two fire hydrant assemblies; to serve the Pin Hook Ridge development.

