

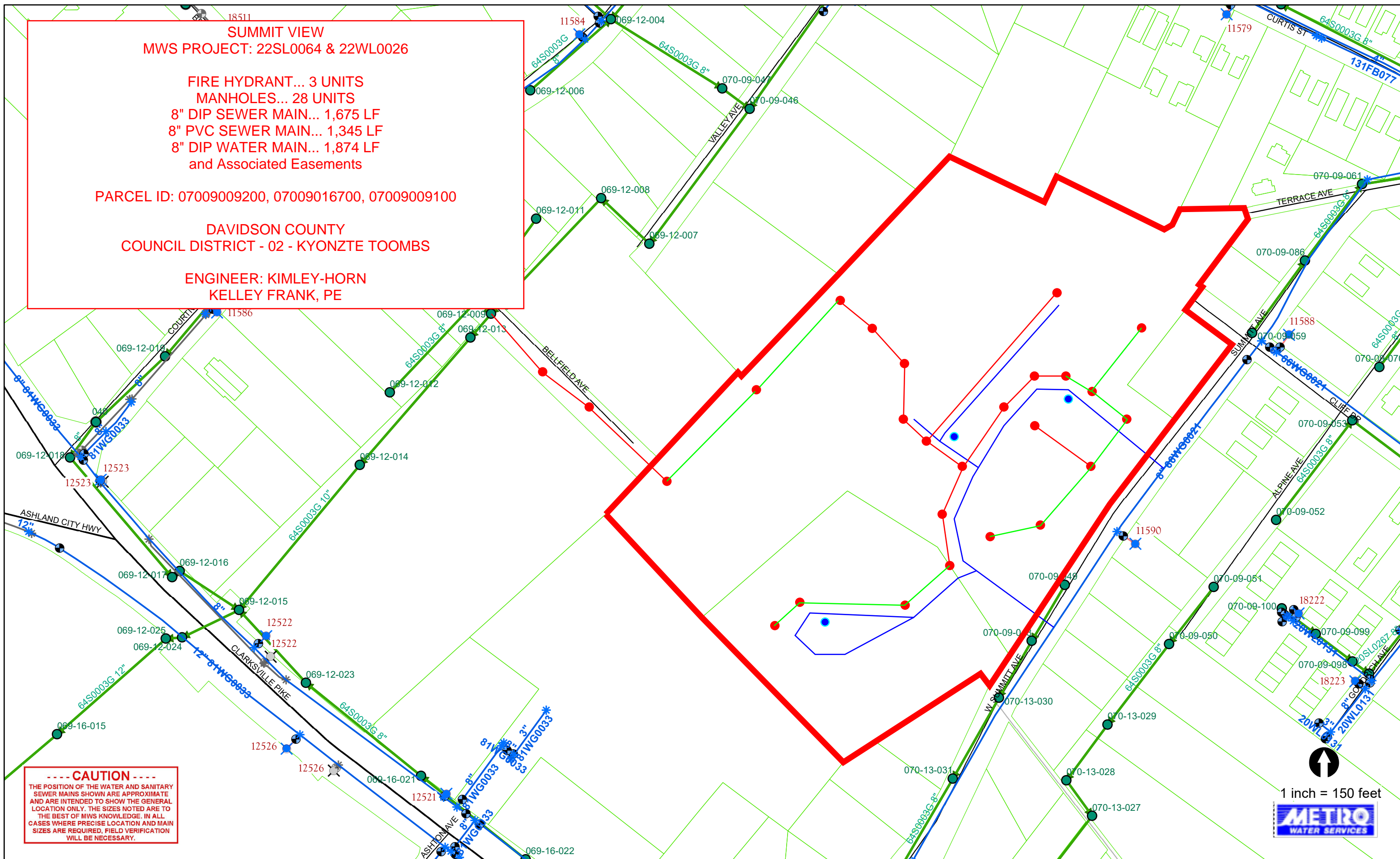
**SUMMIT VIEW
MWS PROJECT: 22SL0064 & 22WL0026**

**FIRE HYDRANT... 3 UNITS
MANHOLES... 28 UNITS
8" DIP SEWER MAIN... 1,675 LF
8" PVC SEWER MAIN... 1,345 LF
8" DIP WATER MAIN... 1,874 LF
and Associated Easements**

PARCEL ID: 07009009200, 07009016700, 07009009100

**DAVIDSON COUNTY
COUNCIL DISTRICT - 02 - KYONZTE TOOMBS**

**ENGINEER: KIMLEY-HORN
KELLEY FRANK, PE**



----- CAUTION -----
THE POSITION OF THE WATER AND SANITARY SEWER MAINS SHOWN ARE APPROXIMATE AND ARE INTENDED TO SHOW THE GENERAL LOCATION ONLY. THE SIZES NOTED ARE TO THE BEST OF MWS KNOWLEDGE. IN ALL CASES WHERE PRECISE LOCATION AND MAIN SIZES ARE REQUIRED, FIELD VERIFICATION WILL BE NECESSARY.

1 inch = 150 feet

METRO
WATER SERVICES



November 20, 2023

To: Mike Atchison Metro Water Services

Re: SUMMITT AVE. PROJECT
Planning Commission Mandatory Referral 2023M-181ES-001
Council District #02 Kyonzte Toombs, Council Member

On behalf of the Metropolitan Planning Commission, the following item, referred to the Commission as required by the Metro Charter, has been recommended for *approval* to the Metropolitan Council:

A request for the acceptance of approximately 1,874 linear feet of eight-inch water mains (DIP), three fire hydrant assemblies, 1,675 linear feet of eight-inch sewer mains (DIP), 1,345 linear feet of eight-inch sewer mains (PVC), 28 sanitary sewer manholes, and associated easements to serve the Summitt View development.

The relevant Metro agencies (Metro Parks, Metro Public Works, Metro Water Services, Metro Emergency Communications, the Nashville Electric Service, Metro Finance – Public Property and the Metro Historical Commission) have reviewed the proposal and concur in the recommendation for approval. This request must be approved by the Metro Council to become effective. A sketch showing the location of the request is attached to this letter.

Conditions that apply to this approval: none

This recommendation for approval is given as set forth in the Metropolitan Planning Commission Rules and Procedures. If you have any questions about this matter, please contact Delilah Rhodes at Delilah.Rhodes@nashville.gov or 615-862-7208

Sincerely,

A handwritten signature in blue ink that reads "Lisa Milligan".

Lisa Milligan
Assistant Director Land Development
Metro Planning Department
cc: *Metro Clerk*

Re: SUMMITT AVE. PROJECT
Planning Commission Mandatory Referral 2023M-181ES-001
Council District #02 Kyonzte Toombs, Council Member

A request for the acceptance of approximately 1,874 linear feet of eight-inch water mains (DIP), three fire hydrant assemblies, 1,675 linear feet of eight-inch sewer mains (DIP), 1,345 linear feet of eight-inch sewer mains (PVC), 28 sanitary sewer manholes, and associated easements to serve the Summitt View development.

