



**METROPOLITAN GOVERNMENT OF NASHVILLE
AND DAVIDSON COUNTY**

Metro Office Building
800 President Ronald Reagan Way
P.O. Box 196300
Nashville, TN 37219-6300

January 12, 2023

To: Edward Thurman Metro Water Services

**Re: THE CRESTMOOR
Planning Commission Mandatory Referral # 2023M-001ES-001
Council District #25 Russ Pulley, Council Member**

On behalf of the Metropolitan Planning Commission, the following item, referred to the Commission as required by the Metro Charter, has been recommended for *approval* to the Metropolitan Council:

A request or the replacement of approximately six linear feet of eight-inch water main (CIP) with six linear feet of water main (DIP) and the acceptance of one sanitary sewer manhole to serve The Crestmoor development.

The relevant Metro agencies (Metro Parks, Metro Public Works, Metro Water Services, Metro Emergency Communications, the Nashville Electric Service, Metro Finance – Public Property and the Metro Historical Commission) have reviewed the proposal and concur in the recommendation for approval. This request must be approved by the Metro Council to become effective. A sketch showing the location of the request is attached to this letter.

Conditions that apply to this approval: none

This recommendation for approval is given as set forth in the Metropolitan Planning Commission Rules and Procedures. If you have any questions about this matter, please contact Delilah Rhodes at delilah.rhodes@nashville.gov or 615-862-7208.

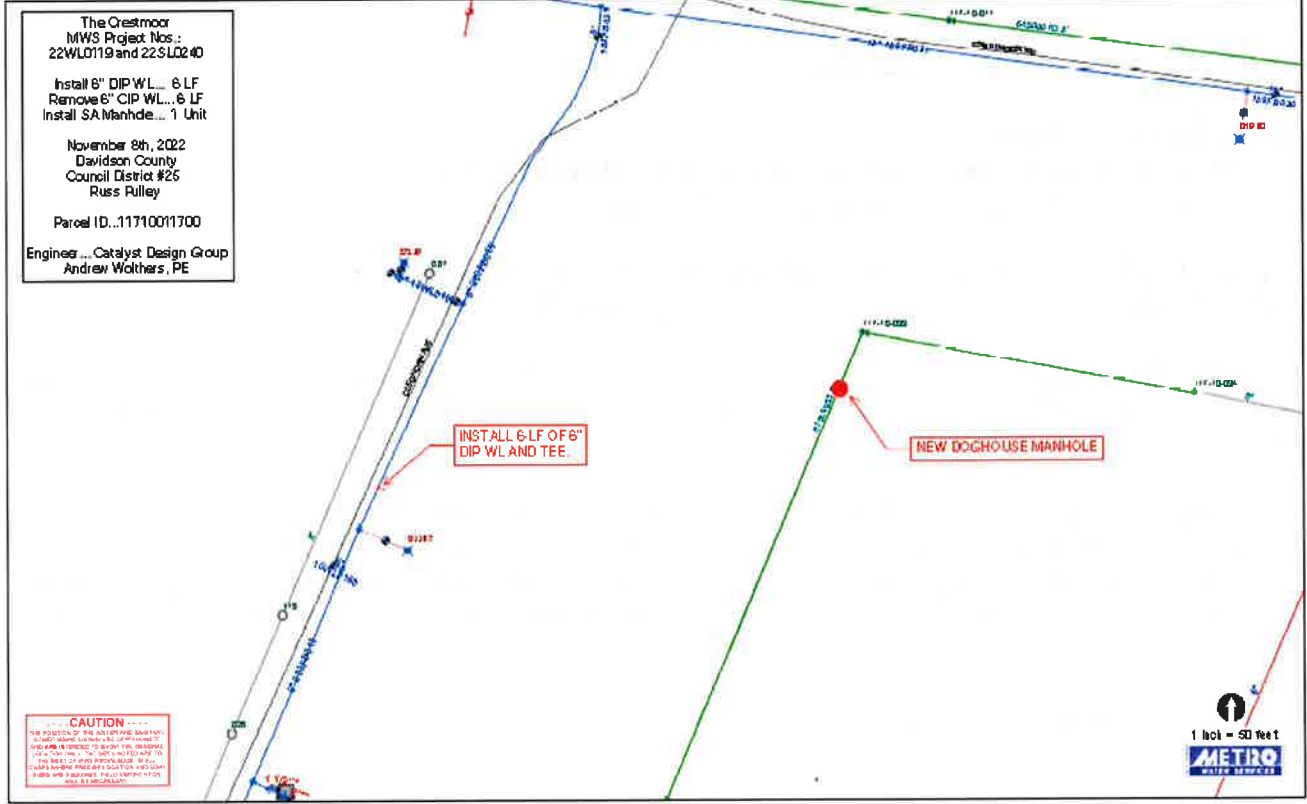
Sincerely,

A handwritten signature in blue ink that reads 'Lisa Milligan'.

Lisa Milligan
Land Development Manager
Metro Planning Department
cc: *Metro Clerk*

Re: THE CRESTMOOR
Planning Commission Mandatory Referral # 2023M-001ES-001
Council District #25 Russ Pulley, Council Member

A request for the replacement of approximately six linear feet of eight-inch water main (CIP) with six linear feet of water main (DIP) and the acceptance of one sanitary sewer manhole to serve The Crestmoor development.



The Crestmoor
 MWS Project Nos.:
 22WL0119 and 22SL0240

Install 6" DIP WL... 6 LF
 Remove 6" CIP WL... 6 LF
 Install SA Manhole... 1 Unit

November 8th, 2022
 Davidson County
 Council District #25
 Russ Pulley

Parcel ID...11710011700

Engineer... Catalyst Design Group
 Andrew Wolthers, PE

INSTALL 6-LF OF 6"
 DIP WL AND TEE.

NEW DOGHOUSE MANHOLE

----- CAUTION -----
 THE POSITION OF THE WATER AND SANITARY
 SEWER MAINS SHOWN ARE APPROXIMATE
 AND ARE INTENDED TO SHOW THE GENERAL
 LOCATION ONLY. THE SIZES NOTED ARE TO
 THE BEST OF MWS KNOWLEDGE. IN ALL
 CASES WHERE PRECISE LOCATION AND MAIN
 SIZES ARE REQUIRED, FIELD VERIFICATION
 WILL BE NECESSARY.

1 inch = 50 feet