

LEGEND

Nolensville Road Wawa
MWS Project No.: 24SL0249

- Proposed 8" Sanitary Sewer Main (PVC)... 560 LF
- Proposed Sanitary Sewer Manholes...5 Units and Associated Easement

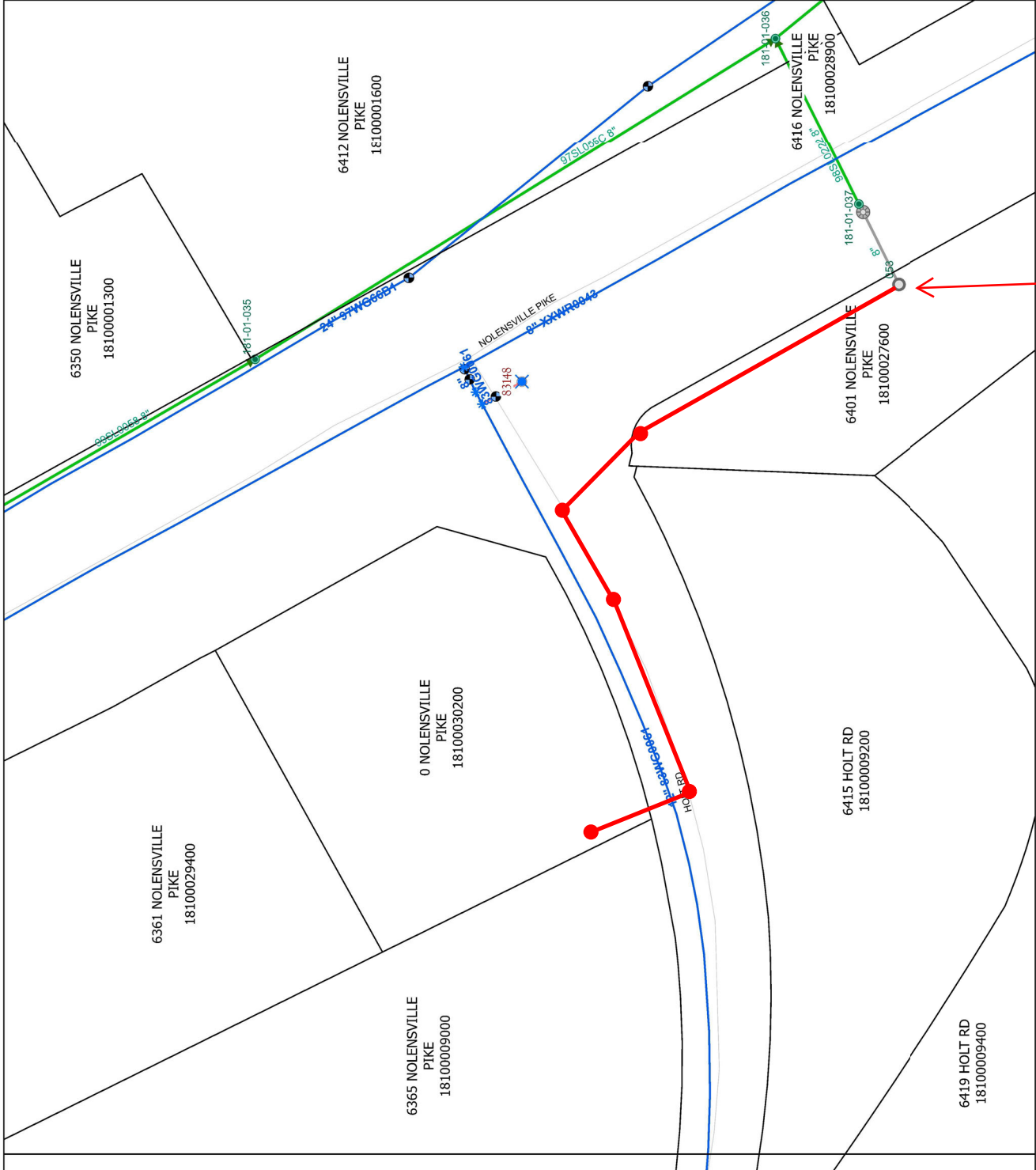
February 07, 2025
Council District 04
Mike Cortese

Parcel ID... 18100030200, 18100027600 & 18100029400

Engineer...Catalyst Design Group
John Reikken, PE

----- CAUTION -----

THE POSITION OF THE WATER AND SANITARY SEWER MAINS SHOWN ARE APPROXIMATE AND ARE INTENDED TO SHOW THE GENERAL LOCATION ONLY. THE SIZES NOTED ARE TO THE BEST OF MWS KNOWLEDGE. IN ALL CASES WHERE PRECISE LOCATION AND MAIN SIZES ARE REQUIRED, FIELD VERIFICATION WILL BE NECESSARY.



Connection location to be coordinated in field.

N A S H V I L L E
P L A N N I N G

March 21, 2025

To: Donnie Stevanus Metro Water Services

**Re: Nolensville Road Wawa
Planning Commission Mandatory Referral 2025M-036ES-001
Council District # 04 Mike Cortese, Council Member**

On behalf of the Metropolitan Planning Commission, the following item, referred to the Commission as required by the Metro Charter, has been recommended for *approval* to the Metropolitan Council:

A request for the acceptance of approximately 560 linear feet of new eight-inch sanitary sewer main (PVC), five new sanitary sewer manholes and any associated easements, to serve the Nolensville Road Wawa development.

The relevant Metro agencies (Metro Parks, Nashville Department of Transportation, Metro Water Services, Metro Emergency Communications, the Nashville Electric Service, General Services – Public Property and the Metro Historical Commission) have reviewed the proposal and concur in the recommendation for approval. This request must be approved by the Metro Council to become effective. A sketch showing the location of the request is attached to this letter.

Conditions that apply to this approval: none

This recommendation for approval is given as set forth in the Metropolitan Planning Commission Rules and Procedures. If you have any questions about this matter, please contact Delilah Rhodes at Delilah.Rhodes@nashville.gov or 615-862-7208

Sincerely,



Lisa Milligan
Assistant Director Land Development
Metro Planning Department
cc: *Metro Clerk*

**Re: Nolensville Road Wawa
Planning Commission Mandatory Referral 2025M-036ES-001
Council District # 04 Mike Cortese, Council Member**

A request for the acceptance of approximately 560 linear feet of new eight-inch sanitary sewer main (PVC), five new sanitary sewer manholes and any associated easements, to serve the Nolensville Road Wawa development.

