



**METROPOLITAN GOVERNMENT OF NASHVILLE
AND DAVIDSON COUNTY**

Metro Office Building
800 President Ronald Reagan Way
P.O. Box 196300
Nashville, TN 37219-6300

January 12, 2023

To: Stephanie James Metro Water Services

Re: **CLIFTON TRIANGLE**
Planning Commission Mandatory Referral # 2023M-003ES-001
Council District #21 Brandon Taylor, Council Member

On behalf of the Metropolitan Planning Commission, the following item, referred to the Commission as required by the Metro Charter, has been recommended for *approval* to the Metropolitan Council:

A request for the abandonment of 583 linear feet of six-inch water main and the acceptance of 583 linear feet of eight-inch water main (DIP) to serve the Clifton Triangle development.

The relevant Metro agencies (Metro Parks, Metro Public Works, Metro Water Services, Metro Emergency Communications, the Nashville Electric Service, Metro Finance – Public Property and the Metro Historical Commission) have reviewed the proposal and concur in the recommendation for approval. This request must be approved by the Metro Council to become effective. A sketch showing the location of the request is attached to this letter.

Conditions that apply to this approval: none

This recommendation for approval is given as set forth in the Metropolitan Planning Commission Rules and Procedures. If you have any questions about this matter, please contact Delilah Rhodes at delilah.rhodes@nashville.gov or 615-862-7208.

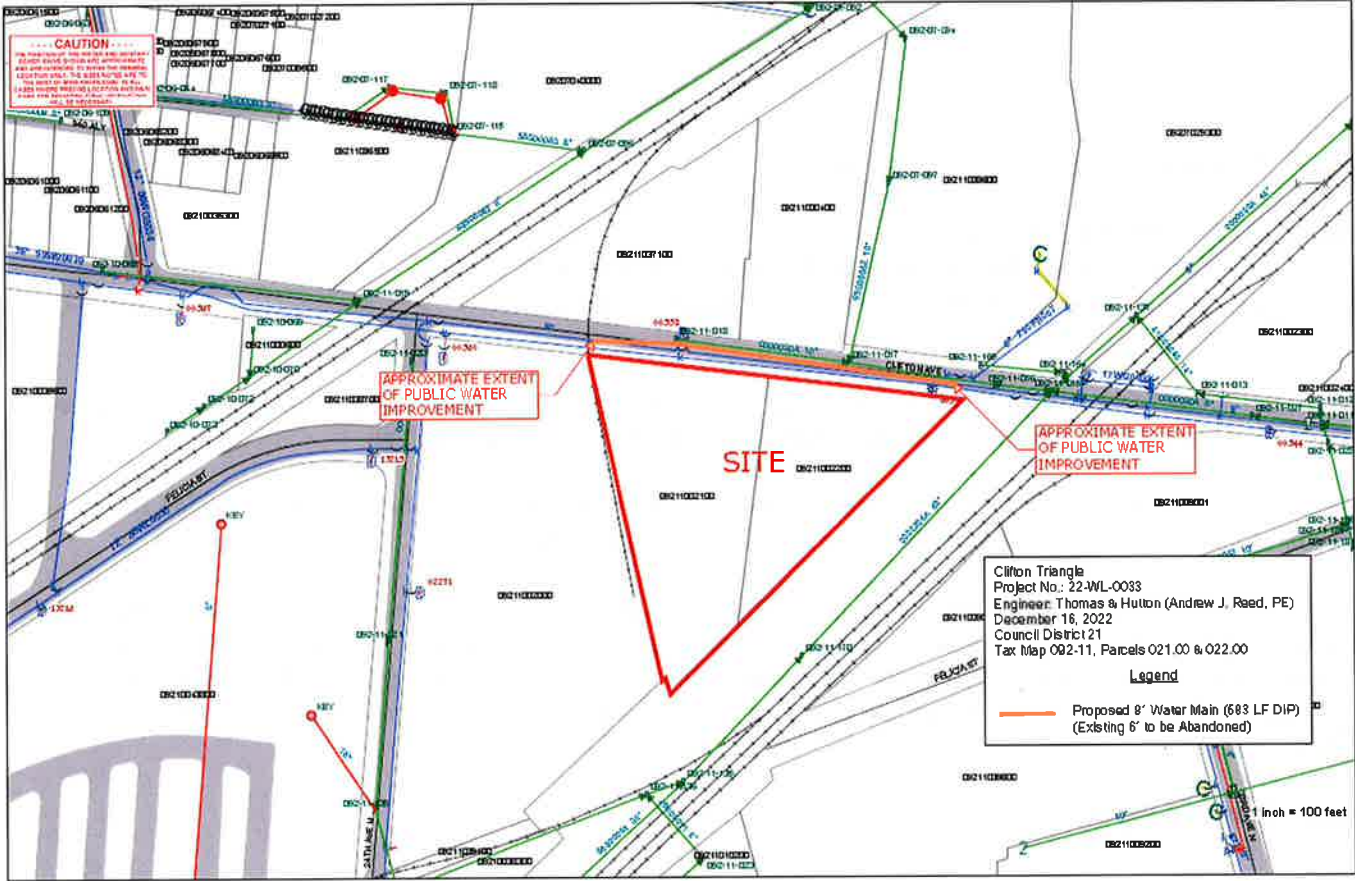
Sincerely,

A handwritten signature in blue ink, appearing to read 'Lisa Milligan'.

Lisa Milligan
Land Development Manager
Metro Planning Department
cc: *Metro Clerk*

Re: CLIFTON TRIANGLE
Planning Commission Mandatory Referral # 2023M-003ES-001
Council District #21 Brandon Taylor, Council Member

A request for the abandonment of 583 linear feet of six-inch water main and the acceptance of 583 linear feet of eight-inch water main (DIP) to serve the Clifton Triangle development.



----- CAUTION -----
THE POSITION OF THE WATER AND SANITARY SEWER MAINS SHOWN ARE APPROXIMATE AND ARE INTENDED TO SHOW THE GENERAL LOCATION ONLY. THE SIZES NOTED ARE TO THE BEST OF MWS KNOWLEDGE. IN ALL CASES WHERE PRECISE LOCATION AND MAIN SIZES ARE REQUIRED, FIELD VERIFICATION WILL BE NECESSARY.

APPROXIMATE EXTENT OF PUBLIC WATER IMPROVEMENT

APPROXIMATE EXTENT OF PUBLIC WATER IMPROVEMENT

SITE

1 inch = 100 feet

