



January 25, 2024

To: Mike Atchison Metro Water Services

Re: **Spring Branch Drive Subdivision**  
**Planning Commission Mandatory Referral 2024M-013ES-001**  
**Council District #10 Jennifer Webb, Council Member**

On behalf of the Metropolitan Planning Commission, the following item, referred to the Commission as required by the Metro Charter, has been recommended for *approval* to the Metropolitan Council:

*A request for the abandonment of approximately 201 linear feet of eight-inch sanitary sewer main (VCP-lined), 1,048 linear feet of eight-inch sanitary sewer main (PVC), six sanitary sewer manholes, and associated easement, and the acceptance of approximately 100 linear feet of eight-inch sanitary sewer main (DIP), 2,065 linear feet of eight-inch sanitary sewer main (PVC), and 18 sanitary sewer manholes to serve the Spring Branch Drive Subdivision.*

The relevant Metro agencies (Metro Parks, Metro Public Works, Metro Water Services, Metro Emergency Communications, the Nashville Electric Service, Metro Finance – Public Property and the Metro Historical Commission) have reviewed the proposal and concur in the recommendation for approval. This request must be approved by the Metro Council to become effective. A sketch showing the location of the request is attached to this letter.

**Conditions that apply to this approval: none**

This recommendation for approval is given as set forth in the Metropolitan Planning Commission Rules and Procedures. If you have any questions about this matter, please contact Delilah Rhodes at [Delilah.Rhodes@nashville.gov](mailto:Delilah.Rhodes@nashville.gov) or 615-862-7208

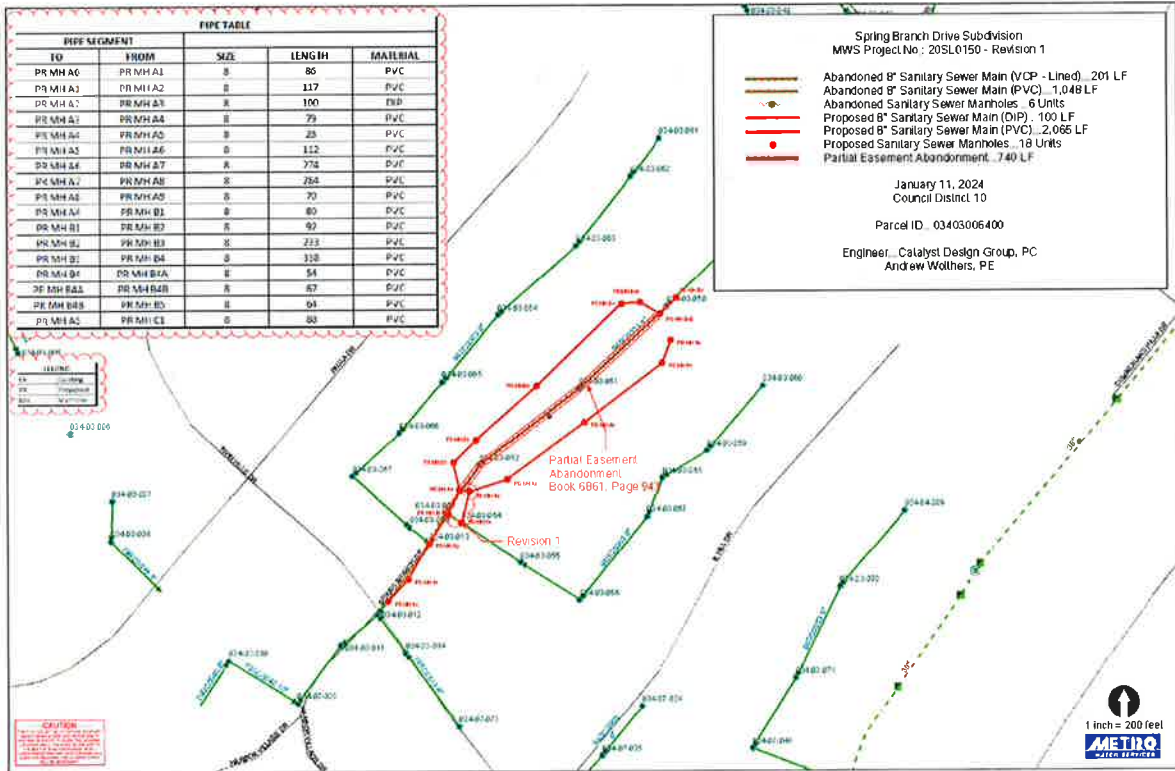
Sincerely,

A handwritten signature in blue ink that reads "Lisa Milligan".

Lisa Milligan  
Assistant Director Land Development  
Metro Planning Department  
cc: Metro Clerk

**Re: Spring Branch Drive Subdivision  
 Planning Commission Mandatory Referral 2024M-013ES-001  
 Council District #10 Jennifer Webb, Council Member**

*A request for the abandonment of approximately 201 linear feet of eight-inch sanitary sewer main (VCP-lined), 1,048 linear feet of eight-inch sanitary sewer main (PVC), six sanitary sewer manholes, and associated easement, and the acceptance of approximately 100 linear feet of eight-inch sanitary sewer main (DIP), 2,065 linear feet of eight-inch sanitary sewer main (PVC), and 18 sanitary sewer manholes to serve the Spring Branch Drive Subdivision.*



**PIPE TABLE**

PIPE SEGMENT				
TO	FROM	SIZE	LENGTH	MATERIAL
PR MH A0	PR MH A1	8	86	PVC
PR MH A1	PR MH A2	8	117	PVC
PR MH A2	PR MH A3	8	100	DIP
PR MH A3	PR MH A4	8	79	PVC
PR MH A4	PR MH A5	8	28	PVC
PR MH A5	PR MH A6	8	112	PVC
PR MH A6	PR MH A7	8	274	PVC
PR MH A7	PR MH A8	8	284	PVC
PR MH A8	PR MH A9	8	70	PVC
PR MH A4	PR MH B1	8	80	PVC
PR MH B1	PR MH B2	8	92	PVC
PR MH B2	PR MH B3	8	233	PVC
PR MH B3	PR MH B4	8	338	PVC
PR MH B4	PR MH B4A	8	54	PVC
PR MH B4A	PR MH B4B	8	67	PVC
PR MH B4B	PR MH B5	8	64	PVC
PR MH A5	PR MH C1	8	88	PVC

Spring Branch Drive Subdivision  
MWS Project No.: 20SL0150 - Revision 1

Abandoned 8" Sanitary Sewer Main (VCP - Lined)...201 LF  
Abandoned 8" Sanitary Sewer Main (PVC)...1,048 LF  
Abandoned Sanitary Sewer Manholes...6 Units  
Proposed 8" Sanitary Sewer Main (DIP)...100 LF  
Proposed 8" Sanitary Sewer Main (PVC)...2,065 LF  
Proposed Sanitary Sewer Manholes...18 Units  
Partial Easement Abandonment...740 LF

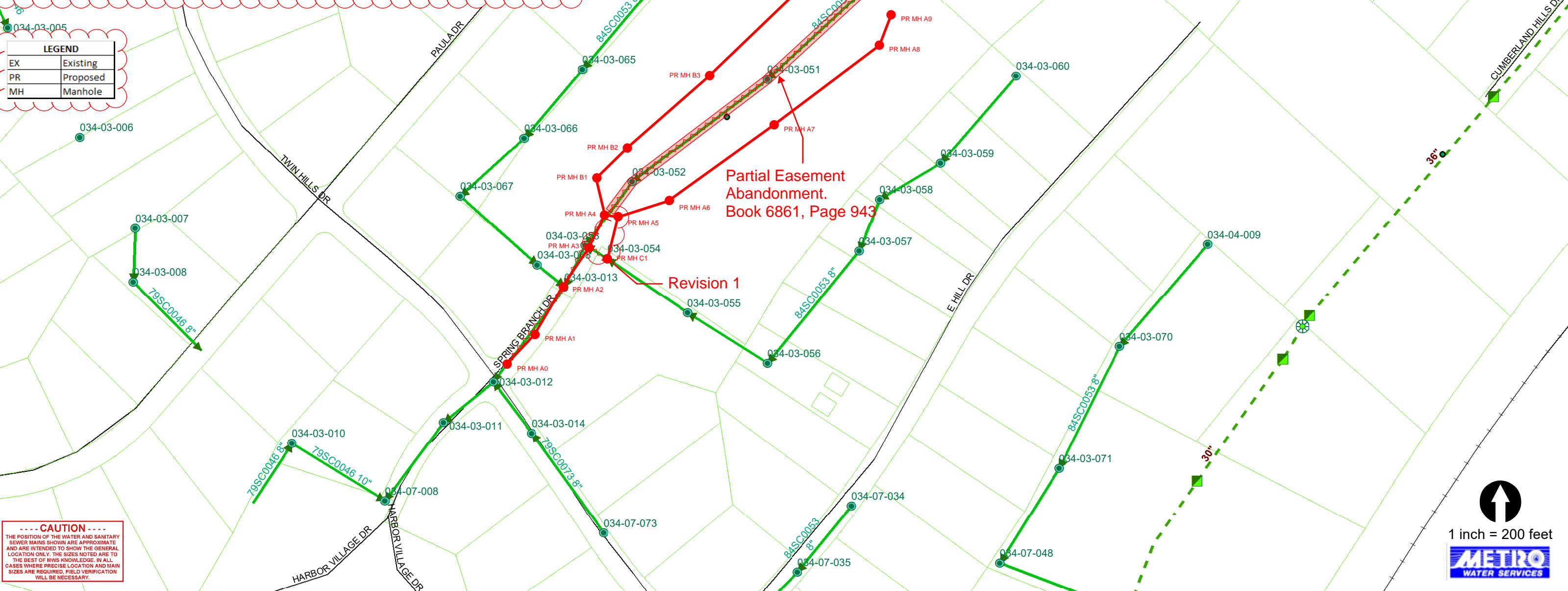
January 11, 2024  
Council District 10

Parcel ID...03403006400

Engineer...Catalyst Design Group, PC  
Andrew Wolthers, PE

**LEGEND**

EX	Existing
PR	Proposed
MH	Manhole



**CAUTION**  
THE POSITION OF THE WATER AND SANITARY SEWER MAINS SHOWN ARE APPROXIMATE AND ARE INTENDED TO SHOW THE GENERAL LOCATION ONLY. THE SIZES NOTED ARE TO THE BEST OF MWS KNOWLEDGE. IN ALL CASES WHERE PRECISE LOCATION AND MAIN SIZES ARE REQUIRED, FIELD VERIFICATION WILL BE NECESSARY.