



March 5, 2024

To: Mike Atchison Metro Water Services

Re: **1106 Waller Road Development (Brentwood)**
Planning Commission Mandatory Referral 2024M-033ES-001

On behalf of the Metropolitan Planning Commission, the following item, referred to the Commission as required by the Metro Charter, has been recommended for *approval* to the Metropolitan Council:

A request for the acceptance of approximately 405 linear feet of eight-inch sanitary sewer mains (PVC), three sanitary sewer manholes, and easements to serve the development at 1106 Waller Road.

The relevant Metro agencies (Metro Parks, Metro Public Works, Metro Water Services, Metro Emergency Communications, the Nashville Electric Service, Metro Finance – Public Property and the Metro Historical Commission) have reviewed the proposal and concur in the recommendation for approval. This request must be approved by the Metro Council to become effective. A sketch showing the location of the request is attached to this letter.

Conditions that apply to this approval: none

This recommendation for approval is given as set forth in the Metropolitan Planning Commission Rules and Procedures. If you have any questions about this matter, please contact Delilah Rhodes at Delilah.Rhodes@nashville.gov or 615-862-7208

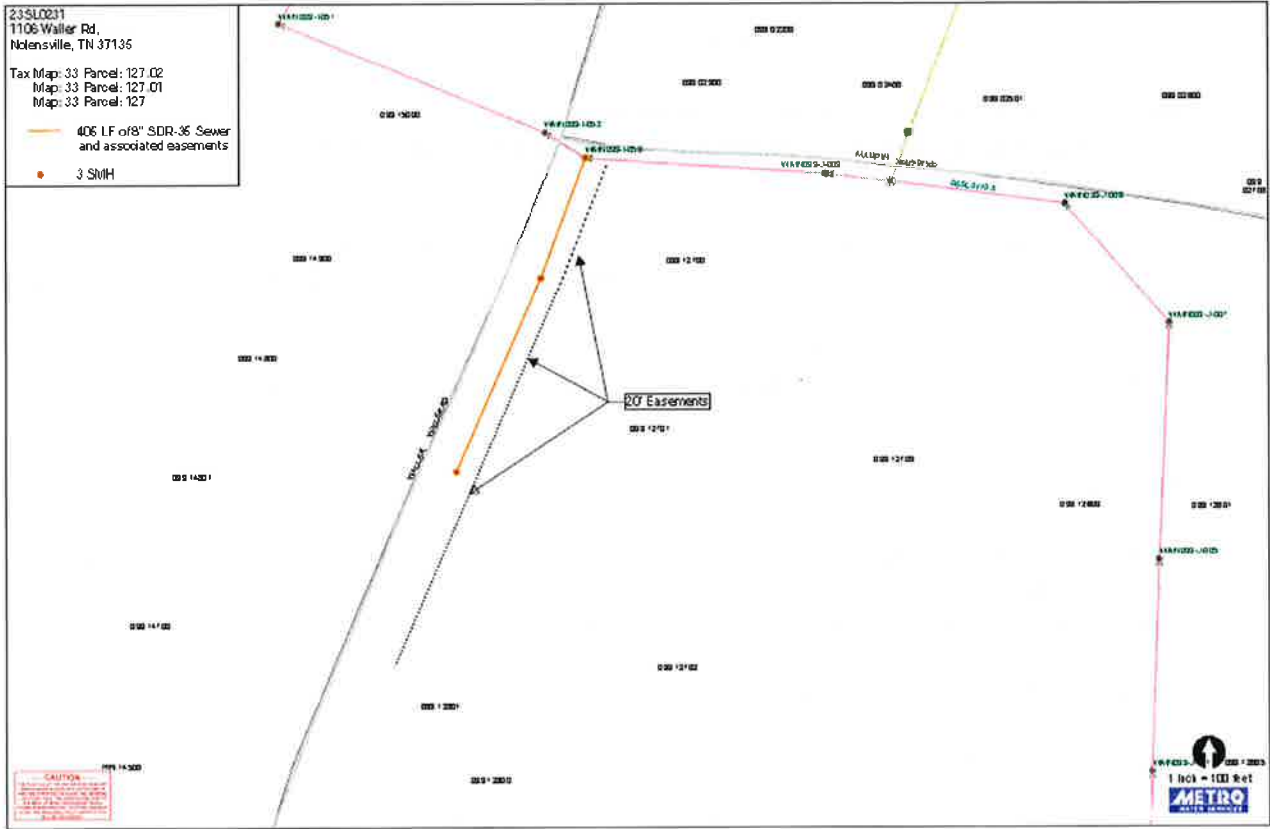
Sincerely,

A handwritten signature in blue ink that reads "Lisa Milligan".

Lisa Milligan
Assistant Director Land Development
Metro Planning Department
cc: *Metro Clerk*

**Re: 1106 Waller Road Development (Brentwood)
Planning Commission Mandatory Referral 2024M-033ES-001**

A request for the acceptance of approximately 405 linear feet of eight-inch sanitary sewer mains (PVC), three sanitary sewer manholes, and easements to serve the development at 1106 Waller Road.

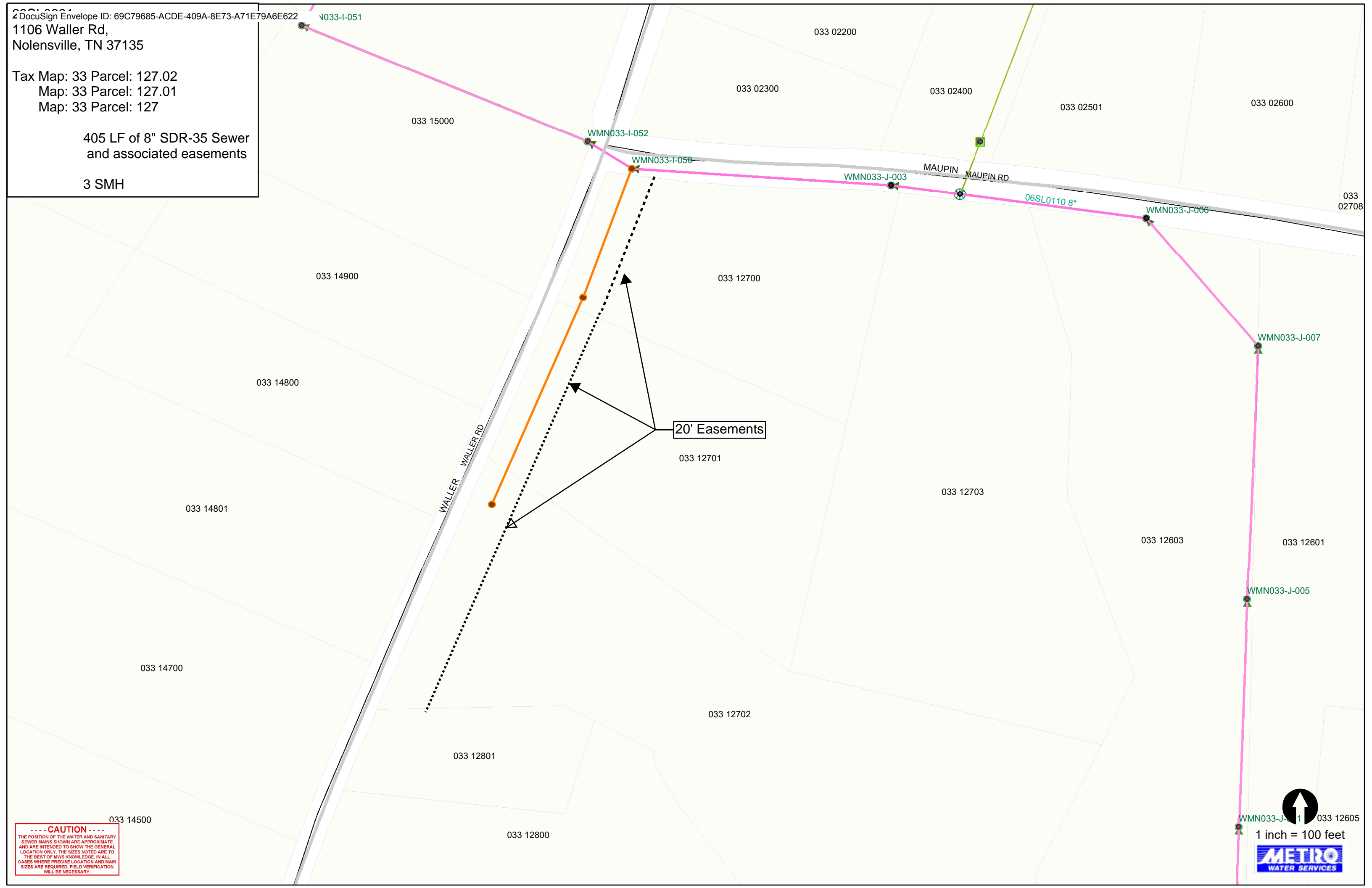


1106 Waller Rd,
Nolensville, TN 37135

Tax Map: 33 Parcel: 127.02
Map: 33 Parcel: 127.01
Map: 33 Parcel: 127

405 LF of 8" SDR-35 Sewer
and associated easements

3 SMH



----- CAUTION -----
 THE POSITION OF THE WATER AND SANITARY SEWER MAINS SHOWN ARE APPROXIMATE AND ARE INTENDED TO SHOW THE GENERAL LOCATION ONLY. THE SIZES NOTED ARE TO THE BEST OF MWS KNOWLEDGE. IN ALL CASES WHERE PRECISE LOCATION AND MAIN SIZES ARE REQUIRED, FIELD VERIFICATION WILL BE NECESSARY.

1 inch = 100 feet

METRO
WATER SERVICES