



February 20, 2024

To: Stephanie James Metro Water Services

**Re: Canyon Ridge Phase 4 & 6  
Planning Commission Mandatory Referral 2024M-029ES-001  
Council District #32 Joy Styles, Council Member**

On behalf of the Metropolitan Planning Commission, the following item, referred to the Commission as required by the Metro Charter, has been recommended for *approval* to the Metropolitan Council:

*A request for the acceptance of approximately 1,351 linear feet of eight-inch water main (DIP), 166 linear feet of four-inch water main (DIP), three fire hydrant assemblies and approximately 695 linear feet of eight-inch sanitary sewer main (PVC), 1,107 linear feet of eight-inch sanitary sewer main (DIP), 14 sanitary sewer manholes and any associated easements to serve the Canyon Ridge Phase 4 and 6 development.*

The relevant Metro agencies (Metro Parks, Metro Public Works, Metro Water Services, Metro Emergency Communications, the Nashville Electric Service, Metro Finance – Public Property and the Metro Historical Commission) have reviewed the proposal and concur in the recommendation for approval. This request must be approved by the Metro Council to become effective. A sketch showing the location of the request is attached to this letter.

**Conditions that apply to this approval: none**

This recommendation for approval is given as set forth in the Metropolitan Planning Commission Rules and Procedures. If you have any questions about this matter, please contact Delilah Rhodes at [Delilah.Rhodes@nashville.gov](mailto:Delilah.Rhodes@nashville.gov) or 615-862-7208

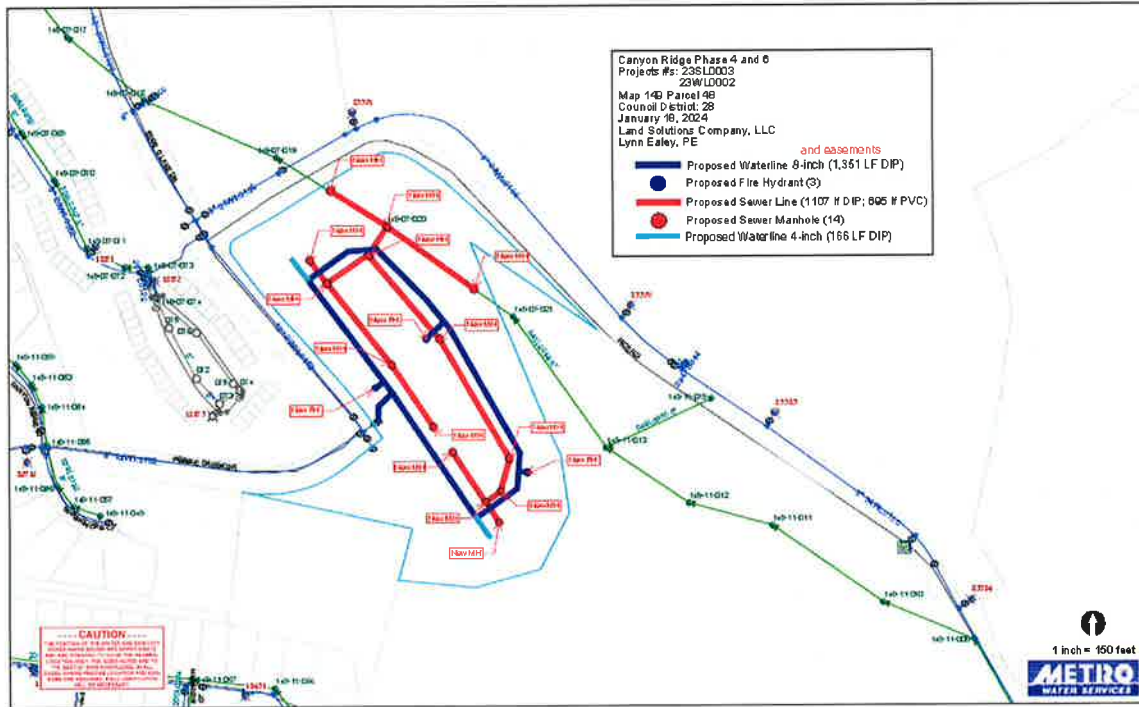
Sincerely,

A handwritten signature in black ink that reads "Lisa Milligan". The signature is written in a cursive, flowing style.

Lisa Milligan  
Assistant Director Land Development  
Metro Planning Department  
cc: *Metro Clerk*

**Re: Canyon Ridge Phase 4 & 6  
Planning Commission Mandatory Referral 2024M-029ES-001  
Council District #32 Joy Styles, Council Member**

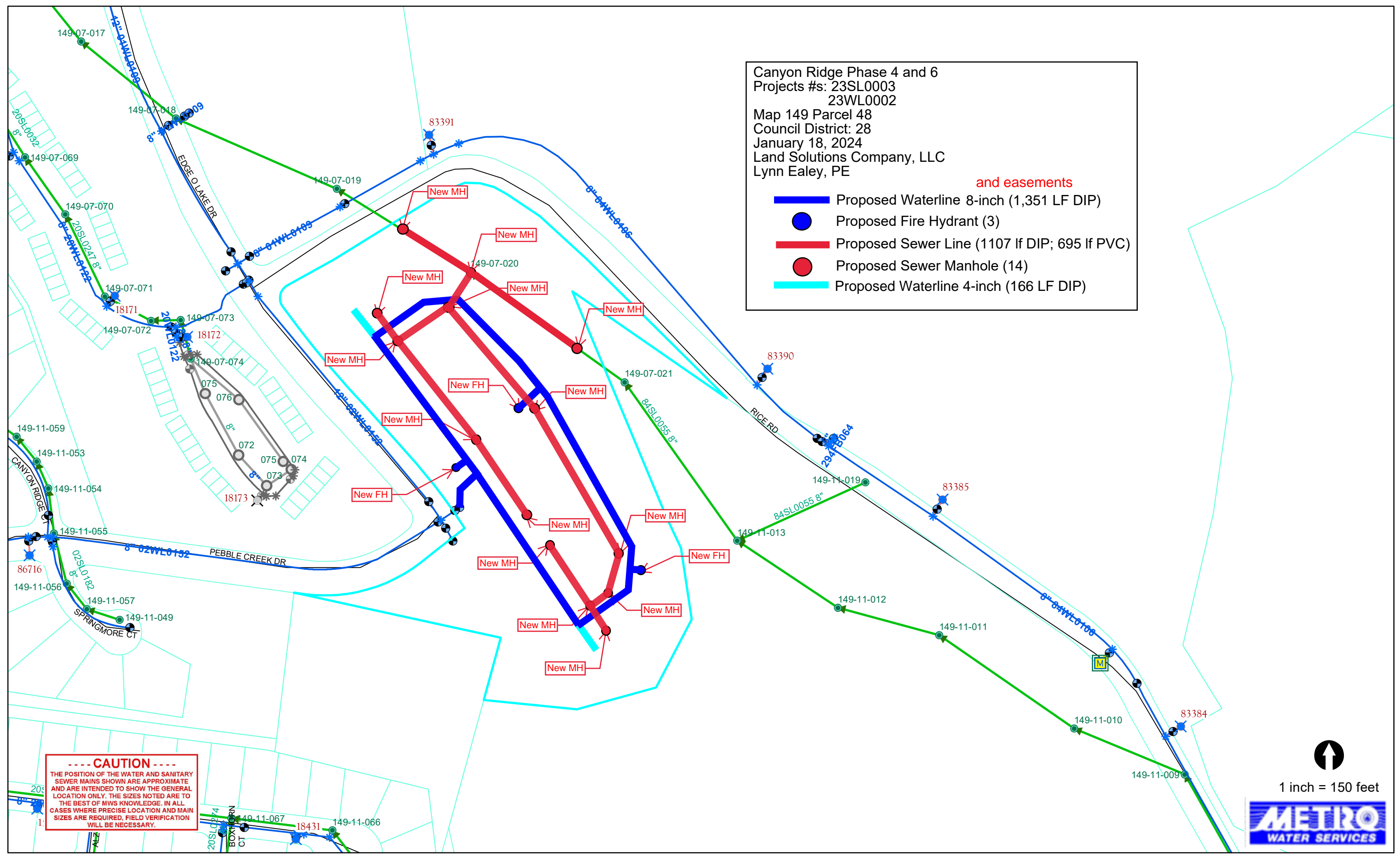
*A request for the acceptance of approximately 1,351 linear feet of eight-inch water main (DIP), 166 linear feet of four-inch water main (DIP), three fire hydrant assemblies and approximately 695 linear feet of eight-inch sanitary sewer main (PVC), 1,107 linear feet of eight-inch sanitary sewer main (DIP), 14 sanitary sewer manholes and any associated easements to serve the Canyon Ridge Phase 4 and 6 development.*



Canyon Ridge Phase 4 and 6  
 Projects #: 23SL0003  
 23WL0002  
 Map 149 Parcel 48  
 Council District: 28  
 January 18, 2024  
 Land Solutions Company, LLC  
 Lynn Ealey, PE

**and easements**

- Proposed Waterline 8-inch (1,351 LF DIP)
- Proposed Fire Hydrant (3)
- Proposed Sewer Line (1107 lf DIP; 695 lf PVC)
- Proposed Sewer Manhole (14)
- Proposed Waterline 4-inch (166 LF DIP)



**----- CAUTION -----**  
 THE POSITION OF THE WATER AND SANITARY SEWER MAINS SHOWN ARE APPROXIMATE AND ARE INTENDED TO SHOW THE GENERAL LOCATION ONLY. THE SIZES NOTED ARE TO THE BEST OF MWS KNOWLEDGE. IN ALL CASES WHERE PRECISE LOCATION AND MAIN SIZES ARE REQUIRED, FIELD VERIFICATION WILL BE NECESSARY.



1 inch = 150 feet

