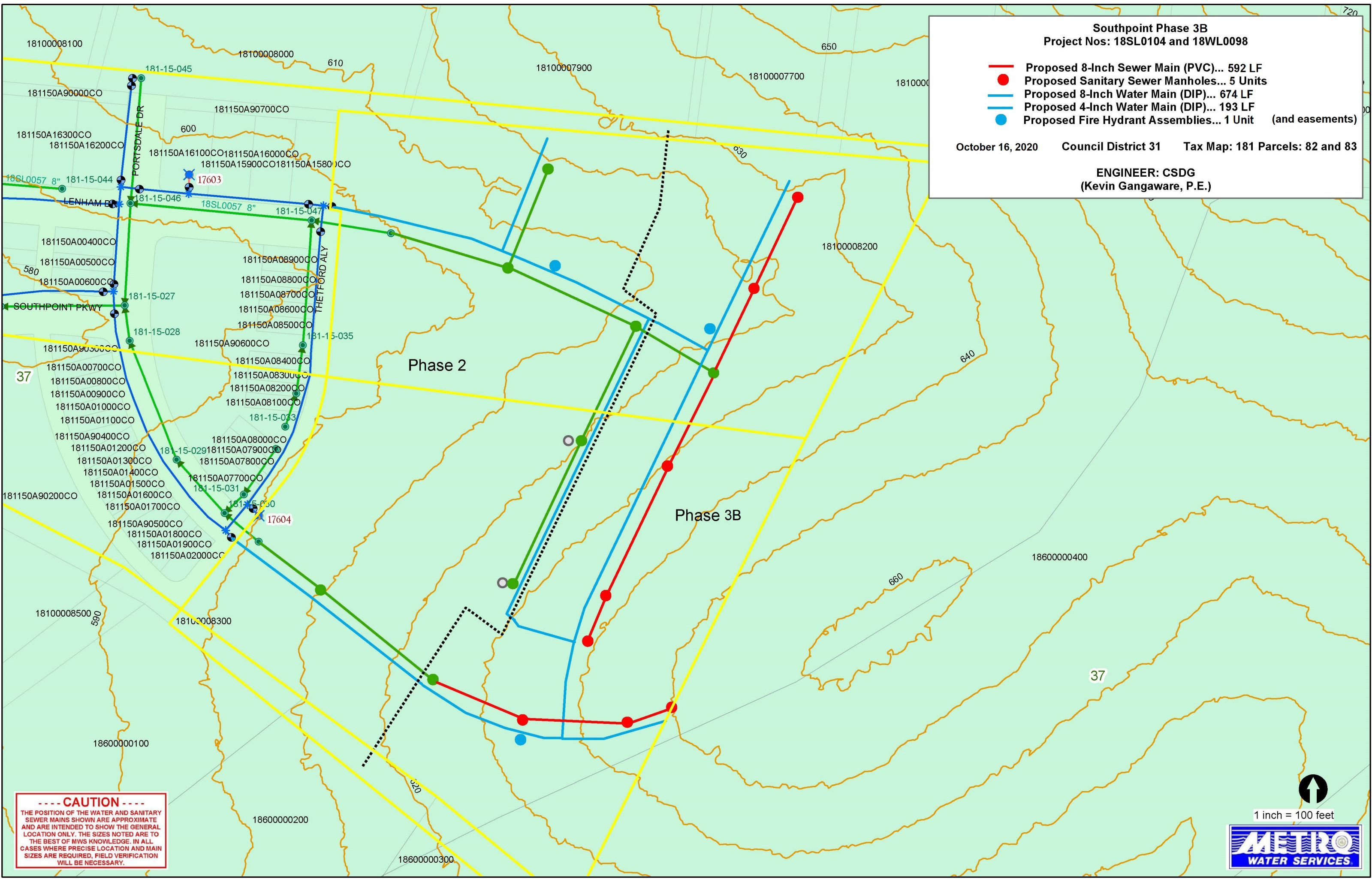


**Southpoint Phase 3B**  
**Project Nos: 18SL0104 and 18WL0098**

- Proposed 8-Inch Sewer Main (PVC)... 592 LF
- Proposed Sanitary Sewer Manholes... 5 Units
- Proposed 8-Inch Water Main (DIP)... 674 LF
- Proposed 4-Inch Water Main (DIP)... 193 LF
- Proposed Fire Hydrant Assemblies... 1 Unit (and easements)

October 16, 2020 Council District 31 Tax Map: 181 Parcels: 82 and 83

**ENGINEER: CSDG**  
**(Kevin Gangaware, P.E.)**



**----- CAUTION -----**  
 THE POSITION OF THE WATER AND SANITARY SEWER MAINS SHOWN ARE APPROXIMATE AND ARE INTENDED TO SHOW THE GENERAL LOCATION ONLY. THE SIZES NOTED ARE TO THE BEST OF MWS KNOWLEDGE. IN ALL CASES WHERE PRECISE LOCATION AND MAIN SIZES ARE REQUIRED, FIELD VERIFICATION WILL BE NECESSARY.

1 inch = 100 feet