



**METROPOLITAN GOVERNMENT
OF NASHVILLE AND DAVIDSON COUNTY**

Planning Department
Metro Office Building
800 Second Avenue South
Nashville, Tennessee 37201

April 7, 2021

To: Mike Atchison, Metro Water Services

**Re: Ashton Park Water Mains
Planning Commission Mandatory Referral #2021M-026ES-001
Council District #12 – Erin Evans, Council Member**

On behalf of the Metropolitan Planning Commission, the following item, referred to the Commission as required by the Metro Charter, has been recommended for *approval* to the Metropolitan Council:

A request for the relocation of approximately 228 linear feet of 8-inch water main (DIP) and 8 linear feet of 6-inch water main (DIP) accommodate stormwater infrastructure and adjusted road grade profiles on Earhart Road (see sketch for details) to serve the Ashton Park development (MWS proj. no. 21-WL-25).

The relevant Metro agencies (Metro Parks, Metro Public Works, Metro Water Services, Metro Emergency Communications, the Nashville Electric Service, Metro Finance – Public Property and the Metro Historical Commission) have reviewed the proposal and concur in the recommendation for approval. This request must be approved by the Metro Council to become effective. A sketch showing the location of the request is attached to this letter.

Conditions that apply to this approval: None.

This recommendation for approval is given as set forth in the Metropolitan Planning Commission Rules and Procedures. If you have any questions about this matter, please contact Sharon O’Conner at Sharon.oconner@nashville.gov or 615-862-7208.

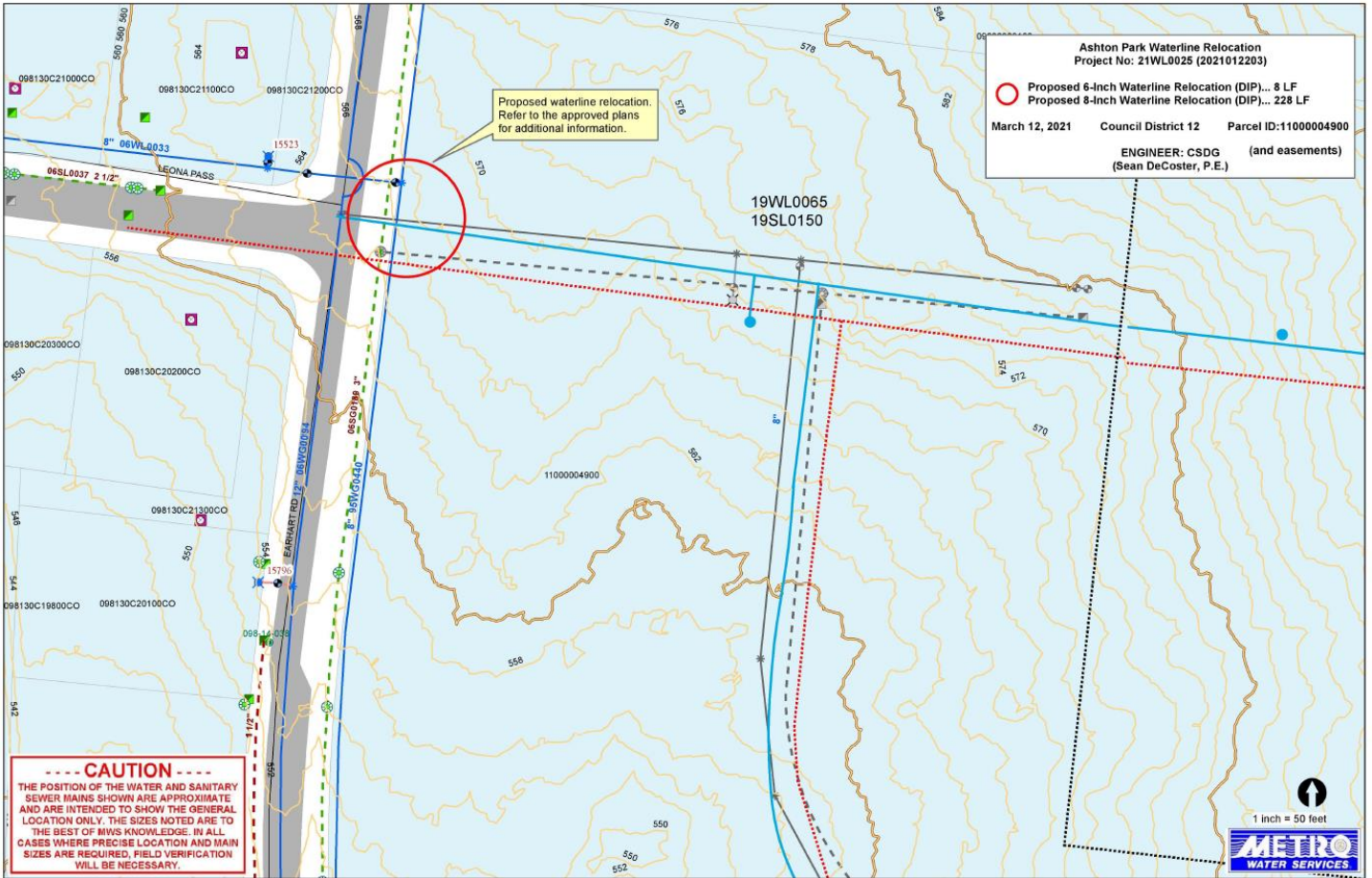
Sincerely,

A handwritten signature in black ink that reads 'Robert Leeman'.

Robert Leeman, AICP
Deputy Director
Metro Planning Department
cc: Metro Clerk, Elizabeth Waites

Re: Ashton Park Water Mains
Planning Commission Mandatory Referral #2021M-026ES-001
Council District #12 – Erin Evans, Council Member

A request for the relocation of approximately 228 linear feet of 8-inch water main (DIP) and 8 linear feet of 6-inch water main (DIP) accommodate stormwater infrastructure and adjusted road grade profiles on Earhart Road (see sketch for details) to serve the Ashton Park development (MWS proj. no. 21-WL-25).



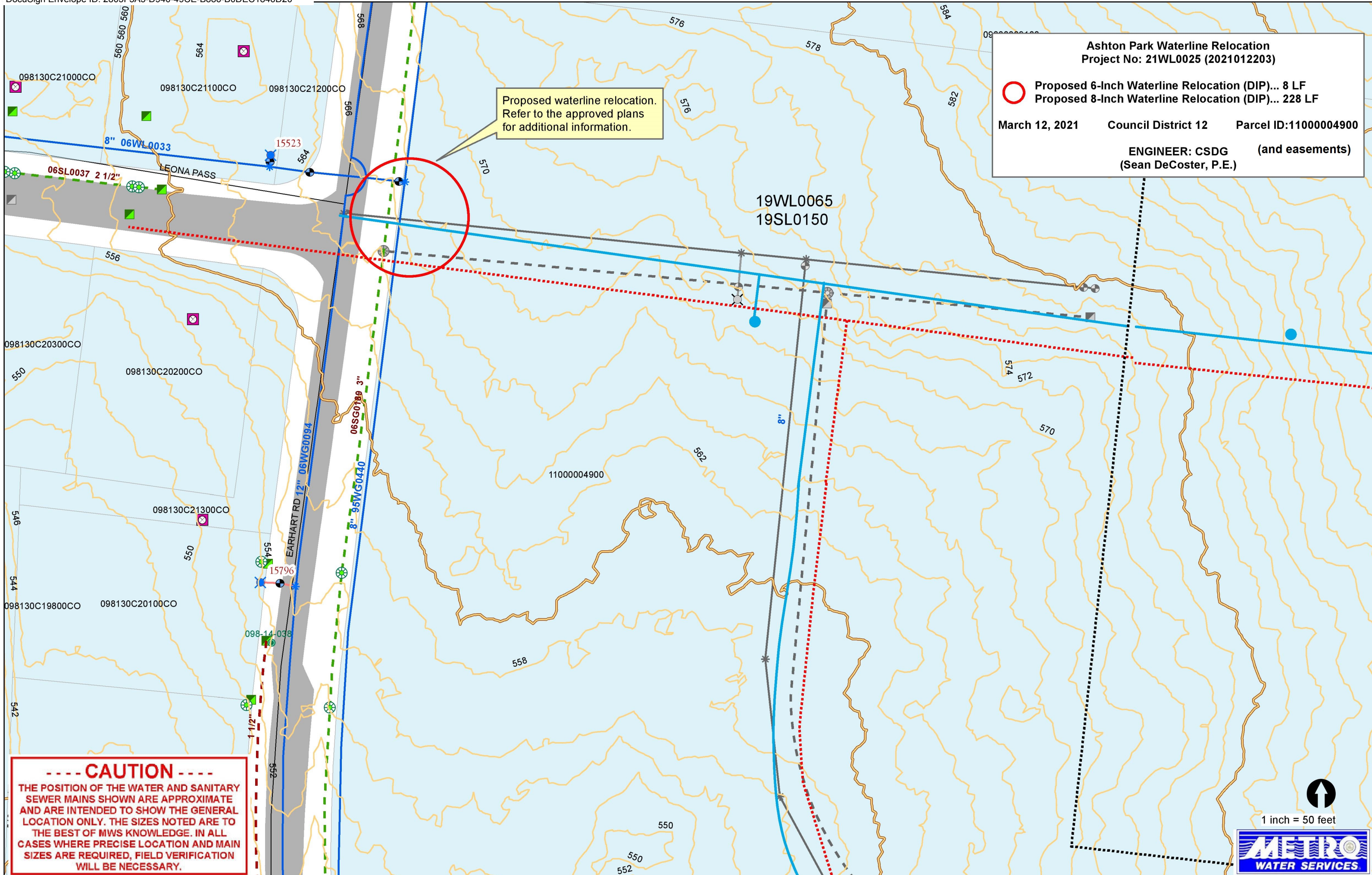
Ashton Park Waterline Relocation
Project No: 21WL0025 (2021012203)

 Proposed 6-Inch Waterline Relocation (DIP)... 8 LF
Proposed 8-Inch Waterline Relocation (DIP)... 228 LF

March 12, 2021 Council District 12 Parcel ID:11000004900

ENGINEER: CSDG (and easements)
(Sean DeCoster, P.E.)

Proposed waterline relocation.
Refer to the approved plans
for additional information.



----- CAUTION -----
THE POSITION OF THE WATER AND SANITARY
SEWER MAINS SHOWN ARE APPROXIMATE
AND ARE INTENDED TO SHOW THE GENERAL
LOCATION ONLY. THE SIZES NOTED ARE TO
THE BEST OF MWS KNOWLEDGE. IN ALL
CASES WHERE PRECISE LOCATION AND MAIN
SIZES ARE REQUIRED, FIELD VERIFICATION
WILL BE NECESSARY.

1 inch = 50 feet

