



**METROPOLITAN GOVERNMENT OF NASHVILLE
AND DAVIDSON COUNTY**
Metro Office Building
800 President Ronald Reagan Way
P.O. Box 196300
Nashville, TN 37219-6300

June 30, 2023

To: Mike Atchison Metro Water Services

**Re: 4307 CENTRAL PIKE PHASE 1
Planning Commission Mandatory Referral 2023M-104ES-001
Council District #12 Erin Evans, Council Member**

On behalf of the Metropolitan Planning Commission, the following item, referred to the Commission as required by the Metro Charter, has been recommended for *approval* to the Metropolitan Council:

A request for the acceptance of approximately 1,964 linear feet of 8-inch water main (DIP), two fire hydrant assemblies, 2,267 linear feet of 8-inch sanitary sewer mains (PVC), 283 linear feet of 8-inch sanitary sewer mains (DIP), 17 sanitary sewer manholes, and associated easements to serve the 4307 Central Pike Phase 1 development.

The relevant Metro agencies (Metro Parks, Metro Public Works, Metro Water Services, Metro Emergency Communications, the Nashville Electric Service, Metro Finance – Public Property and the Metro Historical Commission) have reviewed the proposal and concur in the recommendation for approval. This request must be approved by the Metro Council to become effective. A sketch showing the location of the request is attached to this letter.

Conditions that apply to this approval: none

This recommendation for approval is given as set forth in the Metropolitan Planning Commission Rules and Procedures. If you have any questions about this matter, please contact Delilah Rhodes at delilah.rhodes@nashville.gov or 615-862-7208.

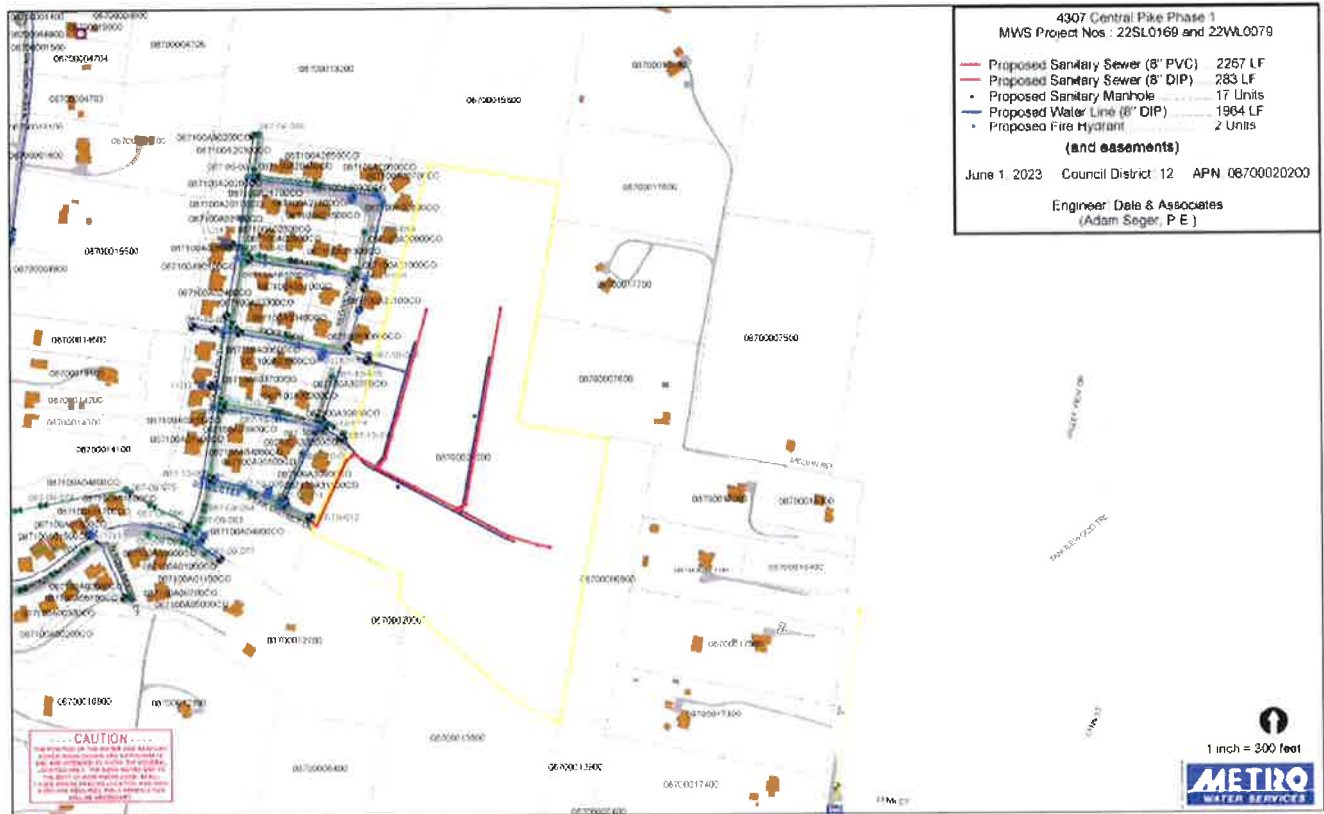
Sincerely,

A handwritten signature in blue ink that reads "Lisa Milligan".

Lisa Milligan
Land Development Manager
Metro Planning Department
cc: *Metro Clerk*

**Re: 4307 CENTRAL PIKE PHASE 1
Planning Commission Mandatory Referral # 2023M-104ES-001
Council District #12 Erin Evans, Council Member**

A request for the acceptance of approximately 1,964 linear feet of 8-inch water main (DIP), two fire hydrant assemblies, 2,267 linear feet of 8-inch sanitary sewer mains (PVC), 283 linear feet of 8-inch sanitary sewer mains (DIP), 17 sanitary sewer manholes, and associated easements to serve the 4307 Central Pike Phase 1 development.



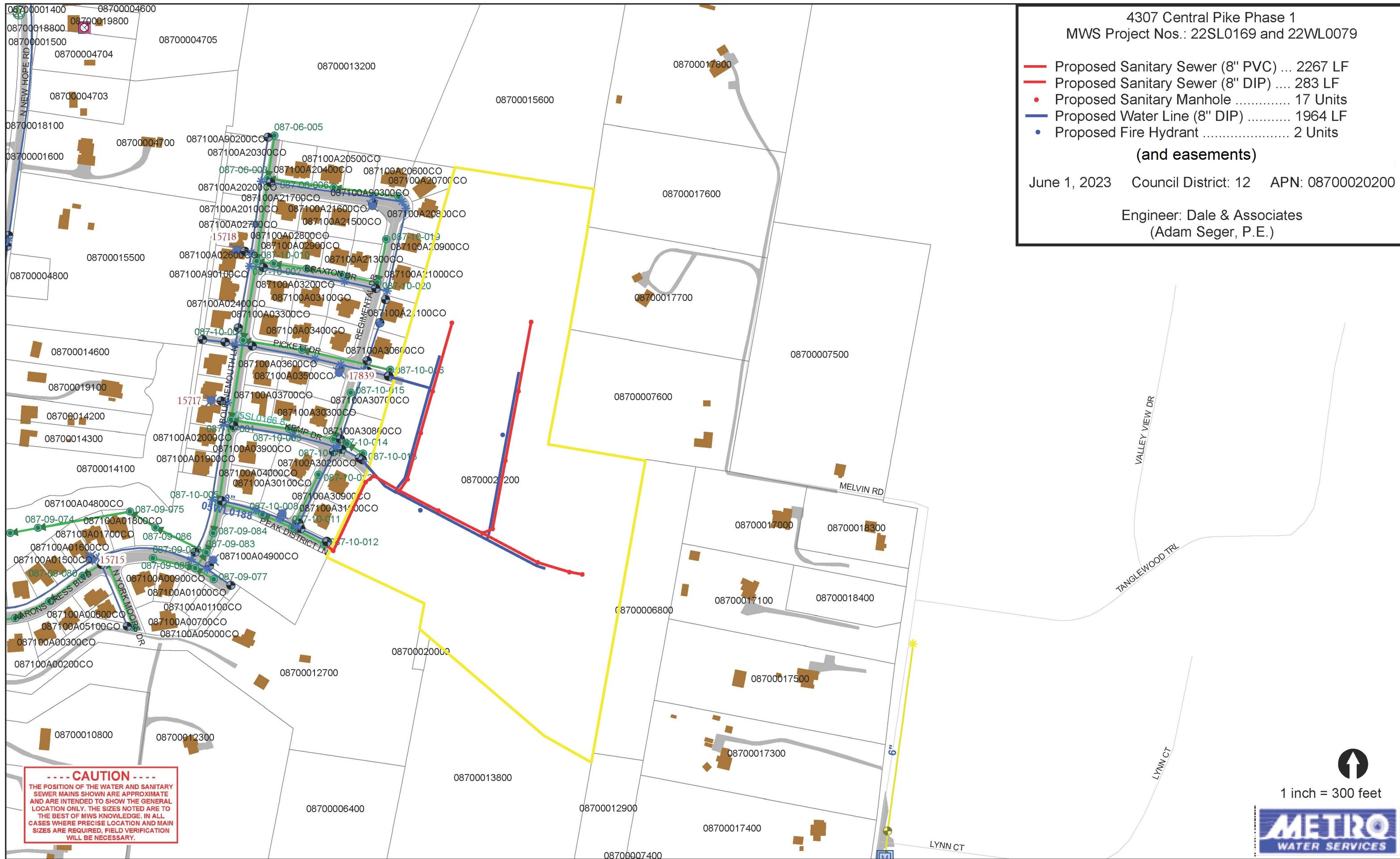
4307 Central Pike Phase 1
MWS Project Nos.: 22SL0169 and 22WL0079

- Proposed Sanitary Sewer (8" PVC) ... 2267 LF
- Proposed Sanitary Sewer (8" DIP) 283 LF
- Proposed Sanitary Manhole 17 Units
- Proposed Water Line (8" DIP) 1964 LF
- Proposed Fire Hydrant 2 Units

(and easements)

June 1, 2023 Council District: 12 APN: 08700020200

Engineer: Dale & Associates
(Adam Seger, P.E.)



----- CAUTION -----
 THE POSITION OF THE WATER AND SANITARY SEWER MAINS SHOWN ARE APPROXIMATE AND ARE INTENDED TO SHOW THE GENERAL LOCATION ONLY. THE SIZES NOTED ARE TO THE BEST OF MWS KNOWLEDGE. IN ALL CASES WHERE PRECISE LOCATION AND MAIN SIZES ARE REQUIRED, FIELD VERIFICATION WILL BE NECESSARY.

1 inch = 300 feet

