



**METROPOLITAN GOVERNMENT
OF NASHVILLE AND DAVIDSON COUNTY**

Planning Department
Metro Office Building
800 Second Avenue South
Nashville, Tennessee 37201

June 10, 2022

To: Edward Thurman, Public Metro Water

**Re: VANDERBILT ATHLETICS PHASE 1
Planning Commission Mandatory Referral #2022M-087ES-001
Council District #18 Tom Cash, Council Member**

On behalf of the Metropolitan Planning Commission, the following item, referred to the Commission as required by the Metro Charter, has been recommended for *approval* to the Metropolitan Council:

A request for approval for the abandonment of approximately 47 linear feet of 10-inch water main (DIP), 75 linear feet of 16-inch water main (DIP), 210 linear feet of 87-inch combination sewer main (brick), 151 linear feet of 8 feet x 8 feet combination sewer main (RCBC), two combination sewer manholes and easements, and the acceptance of approximately 71 linear feet of 10-inch water main (DIP), 87 linear feet of 16-inch water main (DIP), relocation of one fire hydrant assembly, 347 linear feet of 8 feet x 8 feet combination sewer main (RCBC), four combination sewer manholes, and easements to serve the Vanderbilt Athletics Phase 1 development.

The relevant Metro agencies (Metro Parks, Metro Public Works, Metro Water Services, Metro Emergency Communications, the Nashville Electric Service, Metro Finance – Public Property and the Metro Historical Commission) have reviewed the proposal and concur in the recommendation for approval. This request must be approved by the Metro Council to become effective. A sketch showing the location of the request is attached to this letter.

Conditions that apply to this approval: none

This recommendation for approval is given as set forth in the Metropolitan Planning Commission Rules and Procedures. If you have any questions about this matter, please contact Delilah Rhodes at delilah.rhodes@nashville.gov or 615-862-7208.

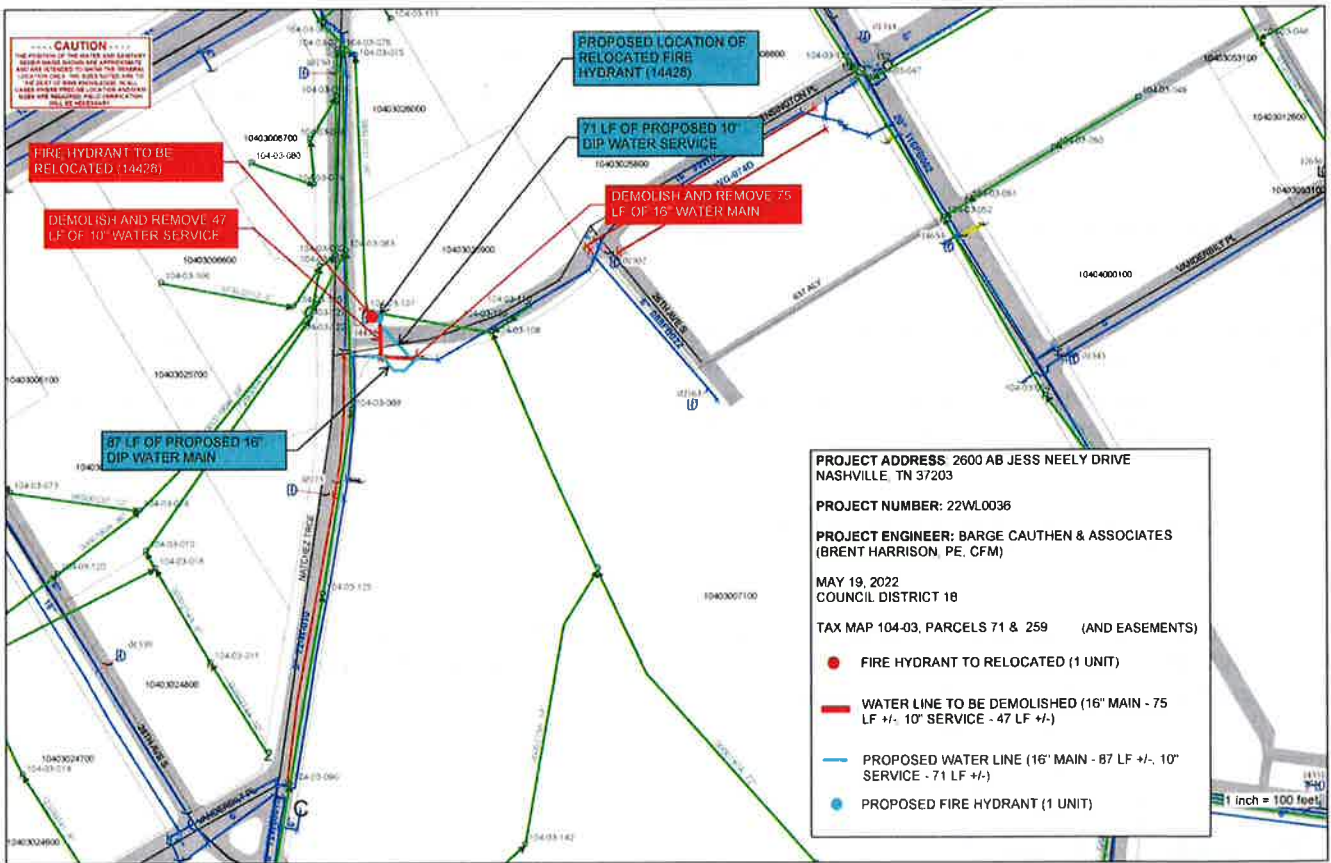
Sincerely,

A handwritten signature in blue ink, appearing to read "Lisa Milligan".

Lisa Milligan
Land Development Manager
Metro Planning Department
cc: *Metro Clerk*

Re: VANDERBILT ATHLETICS PHASE 1
Planning Commission Mandatory Referral #2022M-087ES-001
Council District #18 Tom Cash, Council Member

A request for approval for the abandonment of approximately 47 linear feet of 10-inch water main (DIP), 75 linear feet of 16-inch water main (DIP), 210 linear feet of 87-inch combination sewer main (brick), 151 linear feet of 8 feet x 8 feet combination sewer main (RCBC), two combination sewer manholes and easements, and the acceptance of approximately 71 linear feet of 10- inch water main (DIP), 87 linear feet of 16-inch water main (DIP), relocation of one fire hydrant assembly, 347 linear feet of 8 feet x 8 feet combination sewer main (RCBC), four combination sewer manholes, and easements to serve the Vanderbilt Athletics Phase 1 development.



----- CAUTION -----
THE POSITION OF THE WATER AND SANITARY SEWER MAINS SHOWN ARE APPROXIMATE AND ARE INTENDED TO SHOW THE GENERAL LOCATION ONLY. THE SIZES NOTED ARE TO THE BEST OF MWS KNOWLEDGE. IN ALL CASES WHERE PRECISE LOCATION AND MAIN SIZES ARE REQUIRED, FIELD VERIFICATION WILL BE NECESSARY.

**DEMOLISH AND REMOVE
151 LF OF 8' X 8'
CONCRETE
BOX CULVERT
COMBINATION SEWER**

**115 LF OF PROPOSED 8' X 8'
CONCRETE BOX CULVERT
COMBINATION SEWER**

**DEMOLISH AND REMOVE
210 LF OF 87" BRICK
COMBINATION SEWER**

**101 LF OF PROPOSED 8' X 8'
CONCRETE BOX CULVERT
COMBINATION SEWER**

**131 LF OF PROPOSED 8' X 8'
CONCRETE BOX CULVERT
COMBINATION SEWER**

PROJECT ADDRESS: 2600 AB JESS NEELY DRIVE
NASHVILLE, TN 37203

PROJECT NUMBER: 22SL0080

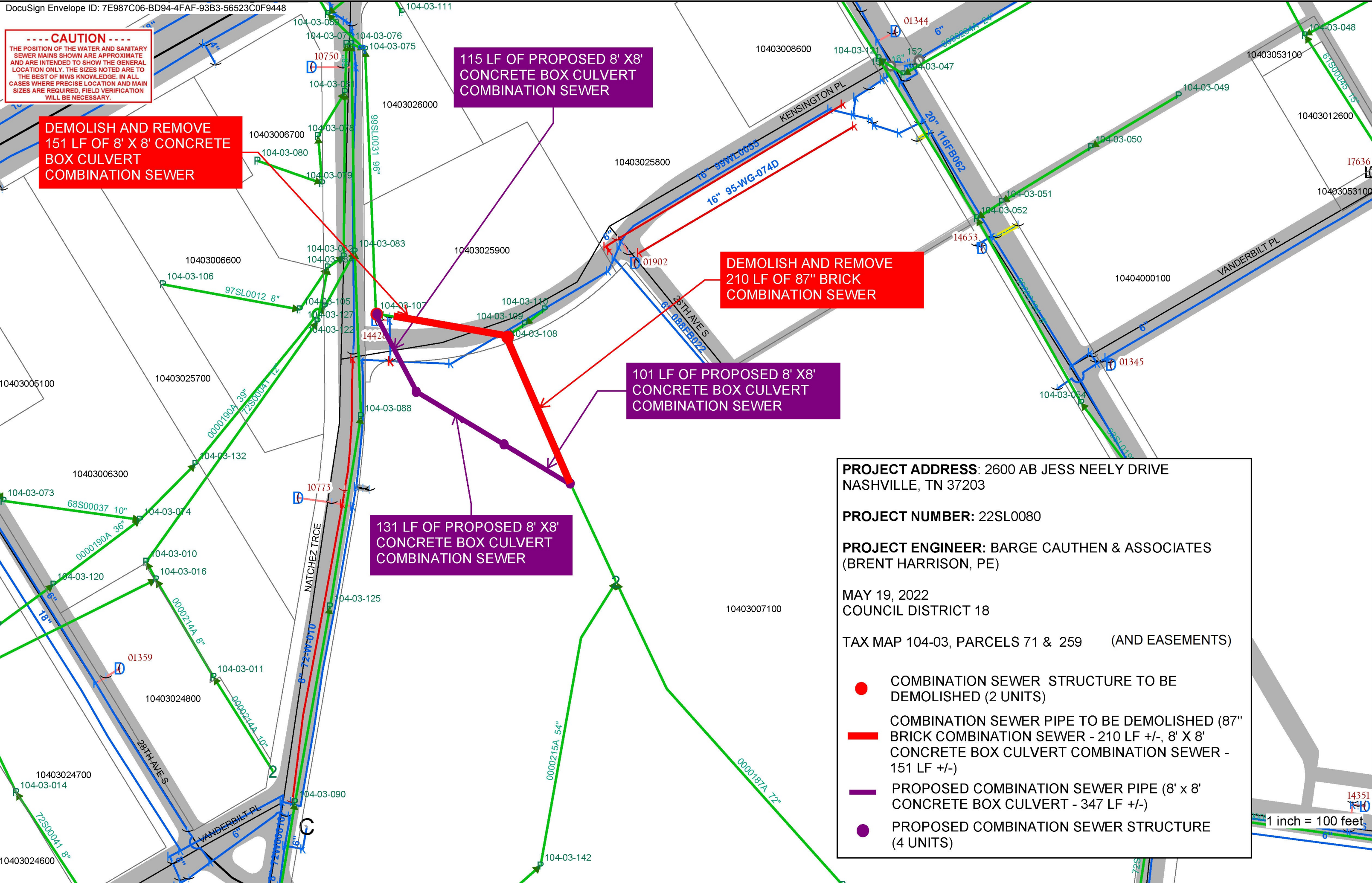
PROJECT ENGINEER: BARGE CAUTHEN & ASSOCIATES
(BRENT HARRISON, PE)

MAY 19, 2022
COUNCIL DISTRICT 18

TAX MAP 104-03, PARCELS 71 & 259 (AND EASEMENTS)

- COMBINATION SEWER STRUCTURE TO BE DEMOLISHED (2 UNITS)
- COMBINATION SEWER PIPE TO BE DEMOLISHED (87" BRICK COMBINATION SEWER - 210 LF +/-, 8' X 8' CONCRETE BOX CULVERT COMBINATION SEWER - 151 LF +/-)
- PROPOSED COMBINATION SEWER PIPE (8' x 8' CONCRETE BOX CULVERT - 347 LF +/-)
- PROPOSED COMBINATION SEWER STRUCTURE (4 UNITS)

1 inch = 100 feet



----- CAUTION -----
THE POSITION OF THE WATER AND SANITARY SEWER MAINS SHOWN ARE APPROXIMATE AND ARE INTENDED TO SHOW THE GENERAL LOCATION ONLY. THE SIZES NOTED ARE TO THE BEST OF MWS KNOWLEDGE. IN ALL CASES WHERE PRECISE LOCATION AND MAIN SIZES ARE REQUIRED, FIELD VERIFICATION WILL BE NECESSARY.

FIRE HYDRANT TO BE RELOCATED (14428)

DEMOLISH AND REMOVE 47 LF OF 10" WATER SERVICE

87 LF OF PROPOSED 16" DIP WATER MAIN

PROPOSED LOCATION OF RELOCATED FIRE HYDRANT (14428)

71 LF OF PROPOSED 10" DIP WATER SERVICE

DEMOLISH AND REMOVE 75 LF OF 16" WATER MAIN

PROJECT ADDRESS: 2600 AB JESS NEELY DRIVE
NASHVILLE, TN 37203

PROJECT NUMBER: 22WL0036

PROJECT ENGINEER: BARGE CAUTHEN & ASSOCIATES
(BRENT HARRISON, PE, CFM)

MAY 19, 2022
COUNCIL DISTRICT 18

TAX MAP 104-03, PARCELS 71 & 259 (AND EASEMENTS)

- FIRE HYDRANT TO RELOCATED (1 UNIT)
- WATER LINE TO BE DEMOLISHED (16" MAIN - 75 LF +/-, 10" SERVICE - 47 LF +/-)
- PROPOSED WATER LINE (16" MAIN - 87 LF +/-, 10" SERVICE - 71 LF +/-)
- PROPOSED FIRE HYDRANT (1 UNIT)

1 inch = 100 feet

