



**METROPOLITAN GOVERNMENT OF NASHVILLE
AND DAVIDSON COUNTY**

Metro Office Building
800 President Ronald Reagan Way
P.O. Box 196300
Nashville, TN 37219-6300

March 20, 2023

To: Mike Atchison Metro Water Services

Re: **CUMBERLAND VIEW VILLAS**
Planning Commission Mandatory Referral # 2023M-043ES-001
Council District #02 Kyonzte Toombs, Council Member

On behalf of the Metropolitan Planning Commission, the following item, referred to the Commission as required by the Metro Charter, has been recommended for *approval* to the Metropolitan Council:

A request for the acceptance of approximately 23 linear feet of 12-inch (PVC) sanitary sewer main, one sanitary sewer manhole, and the rehabilitation (epoxy coating) of three sanitary sewer manholes to serve the Cumberland View Villas development.

The relevant Metro agencies (Metro Parks, Metro Public Works, Metro Water Services, Metro Emergency Communications, the Nashville Electric Service, Metro Finance – Public Property and the Metro Historical Commission) have reviewed the proposal and concur in the recommendation for approval. This request must be approved by the Metro Council to become effective. A sketch showing the location of the request is attached to this letter.

Conditions that apply to this approval: none

This recommendation for approval is given as set forth in the Metropolitan Planning Commission Rules and Procedures. If you have any questions about this matter, please contact Delilah Rhodes at delilah.rhodes@nashville.gov or 615-862-7208.

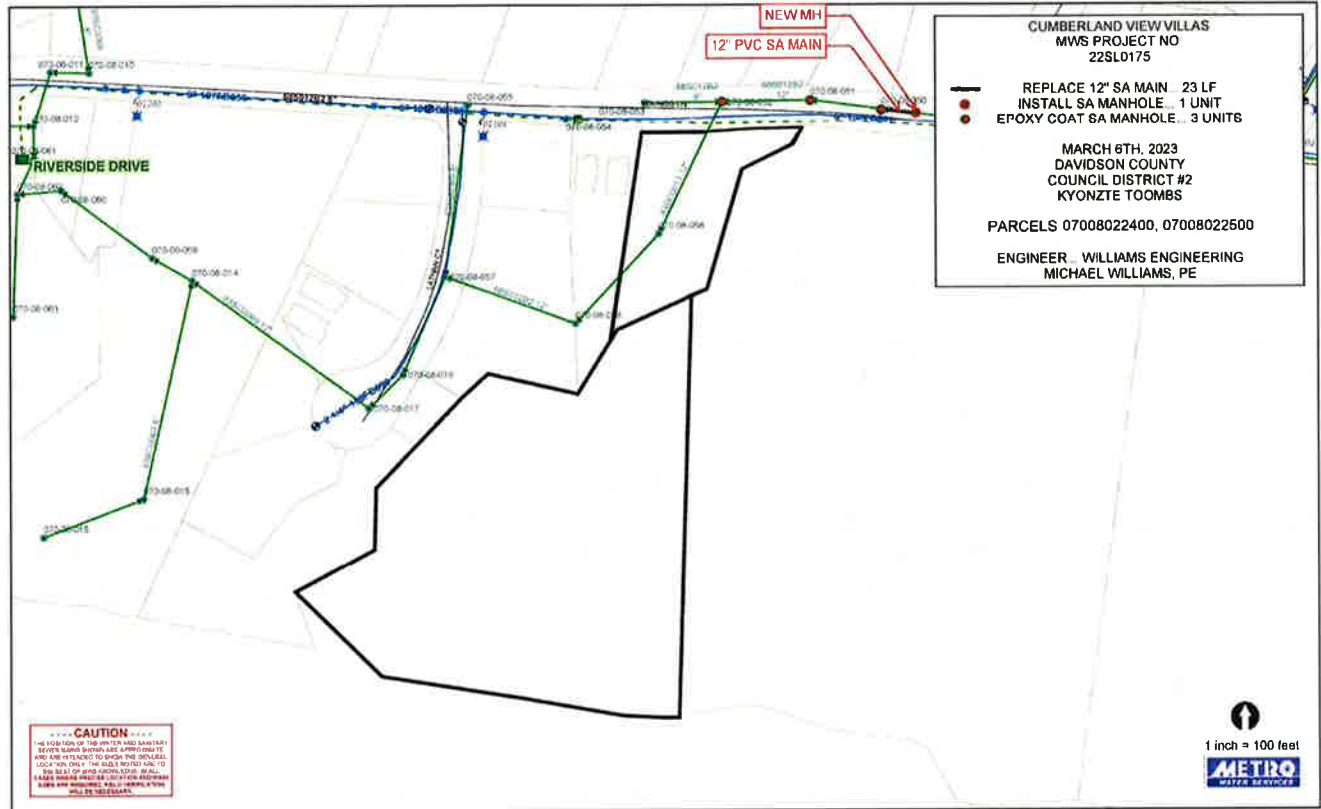
Sincerely,

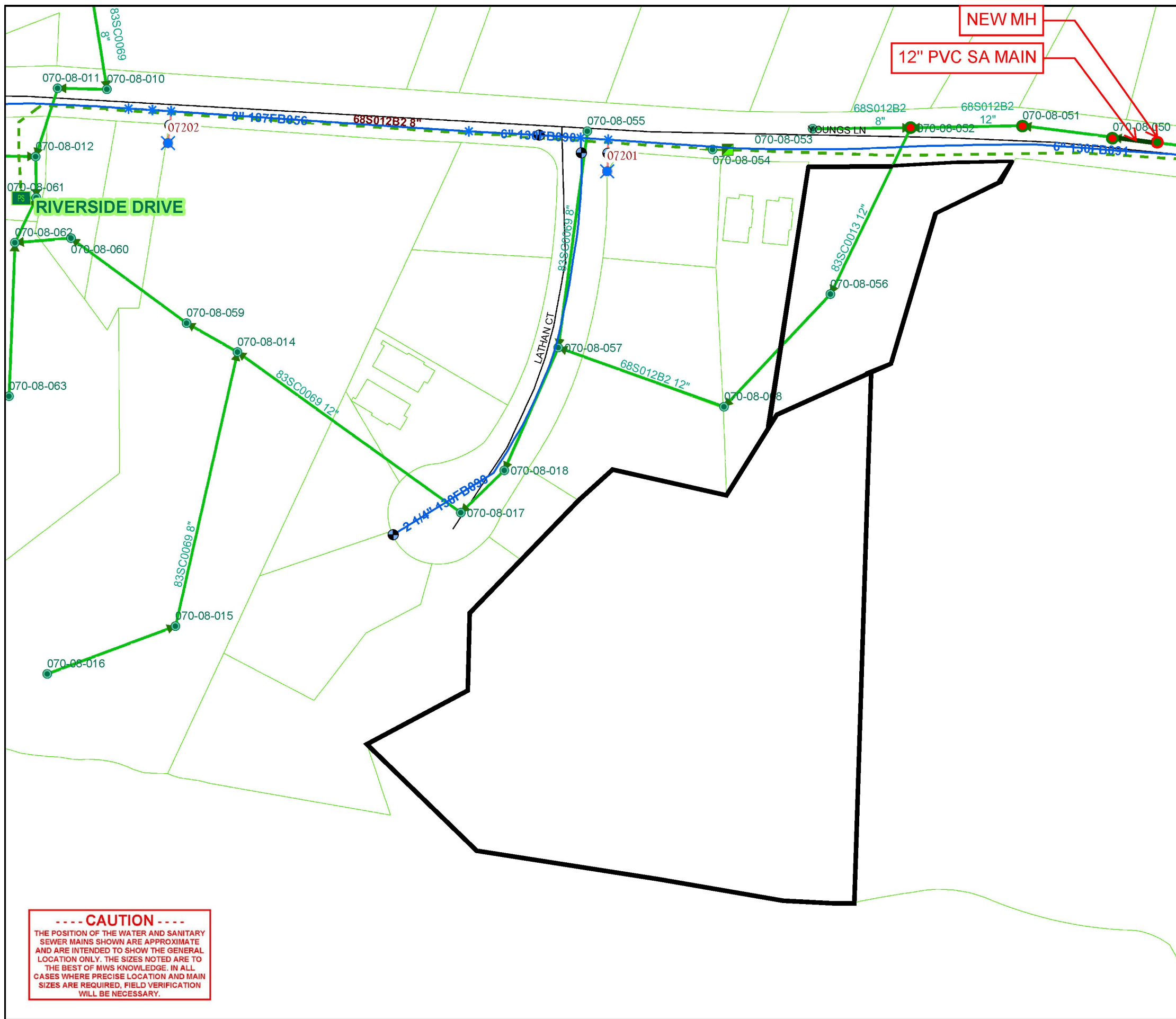
A handwritten signature in blue ink, appearing to read "Lisa Milligan".

Lisa Milligan
Land Development Manager
Metro Planning Department
cc: Metro Clerk

Re: CUMBERLAND VIEW VILLAS
Planning Commission Mandatory Referral # 2023M-043ES-001
Council District #02 Kyonzte Toombs, Council Member

A request for the acceptance of approximately 23 linear feet of 12-inch (PVC) sanitary sewer main, one sanitary sewer manhole, and the rehabilitation (epoxy coating) of three sanitary sewer manholes to serve the Cumberland View Villas development.





CUMBERLAND VIEW VILLAS
 MWS PROJECT NO:
 22SL0175

REPLACE 12" SA MAIN... 23 LF
 INSTALL SA MANHOLE... 1 UNIT
 EPOXY COAT SA MANHOLE... 3 UNITS

MARCH 6TH, 2023
 DAVIDSON COUNTY
 COUNCIL DISTRICT #2
 KYONZTE TOOMBS

PARCELS 07008022400, 07008022500

ENGINEER... WILLIAMS ENGINEERING
 MICHAEL WILLIAMS, PE

----- CAUTION -----
 THE POSITION OF THE WATER AND SANITARY
 SEWER MAINS SHOWN ARE APPROXIMATE
 AND ARE INTENDED TO SHOW THE GENERAL
 LOCATION ONLY. THE SIZES NOTED ARE TO
 THE BEST OF MWS KNOWLEDGE. IN ALL
 CASES WHERE PRECISE LOCATION AND MAIN
 SIZES ARE REQUIRED, FIELD VERIFICATION
 WILL BE NECESSARY.

↑
 1 inch = 100 feet
METRO
 WATER SERVICES