



**METROPOLITAN GOVERNMENT OF NASHVILLE
AND DAVIDSON COUNTY**

Metro Office Building
800 President Ronald Reagan Way
P.O. Box 196300
Nashville, TN 37219-6300

December 16, 2022

To: Stephanie James Metro Water Services

**Re: MODERA SOBRO
Planning Commission Mandatory Referral #2022M-188ES-001
Council District #19 Freddie O'Connell, Council Member**

On behalf of the Metropolitan Planning Commission, the following item, referred to the Commission as required by the Metro Charter, has been recommended for *approval* to the Metropolitan Council:

A request for the acceptance of approximately 20 linear feet of six-inch water main (DIP), one fire hydrant assembly, approximately 40 linear feet of sanitary sewer main, and one sanitary sewer manhole to serve the Modera SoBro Phase 1 development.

The relevant Metro agencies (Metro Parks, Metro Public Works, Metro Water Services, Metro Emergency Communications, the Nashville Electric Service, Metro Finance – Public Property and the Metro Historical Commission) have reviewed the proposal and concur in the recommendation for approval. This request must be approved by the Metro Council to become effective. A sketch showing the location of the request is attached to this letter.

Conditions that apply to this approval: none

This recommendation for approval is given as set forth in the Metropolitan Planning Commission Rules and Procedures. If you have any questions about this matter, please contact Delilah Rhodes at delilah.rhodes@nashville.gov or 615-862-7208.

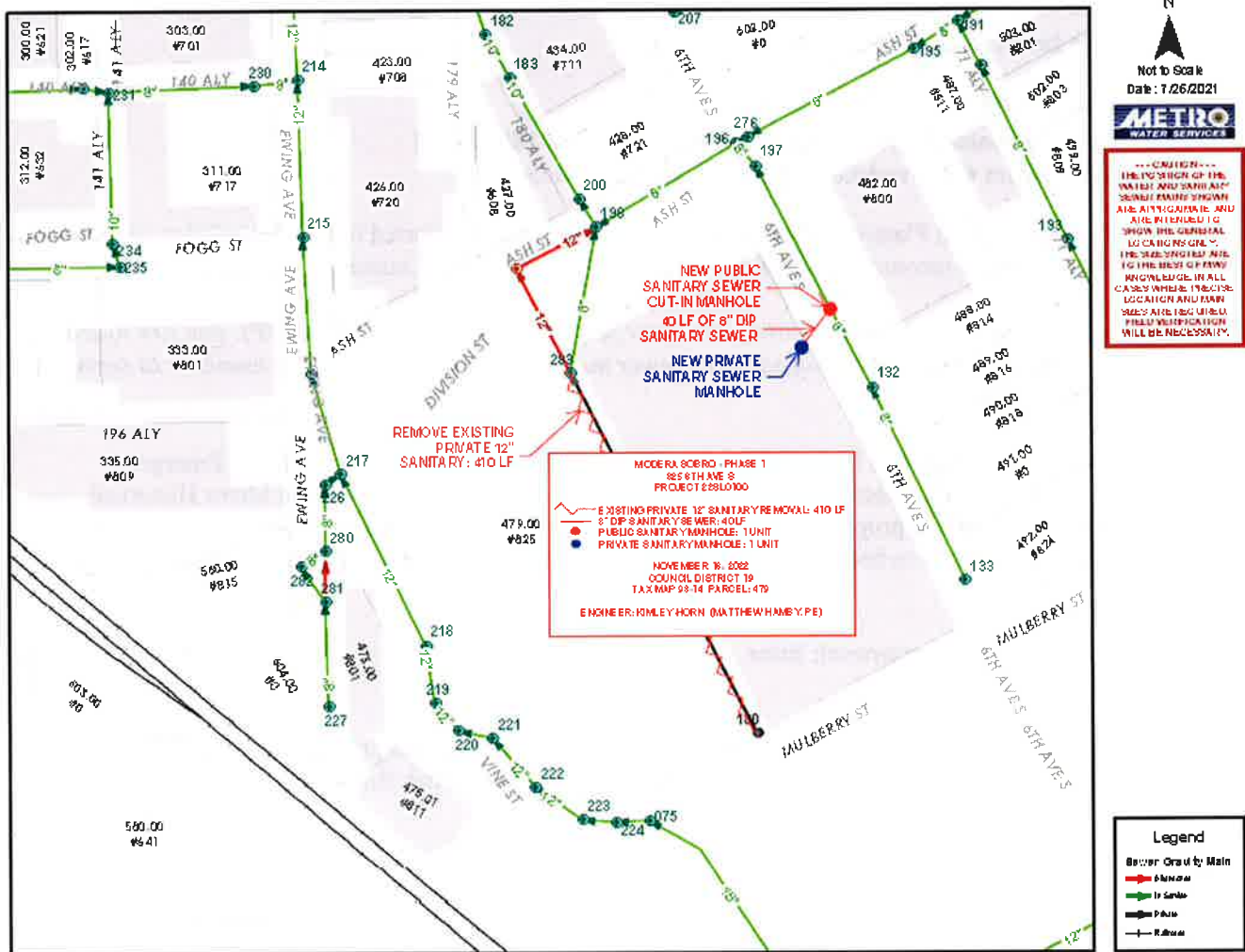
Sincerely,

A handwritten signature in blue ink that reads "Lisa Milligan".

Lisa Milligan
Land Development Manager
Metro Planning Department
cc: *Metro Clerk*

Re: MODERA SOBRO
Planning Commission Mandatory Referral #2022M-188ES-001
Council District #19 Freddie O'Connell, Council Member

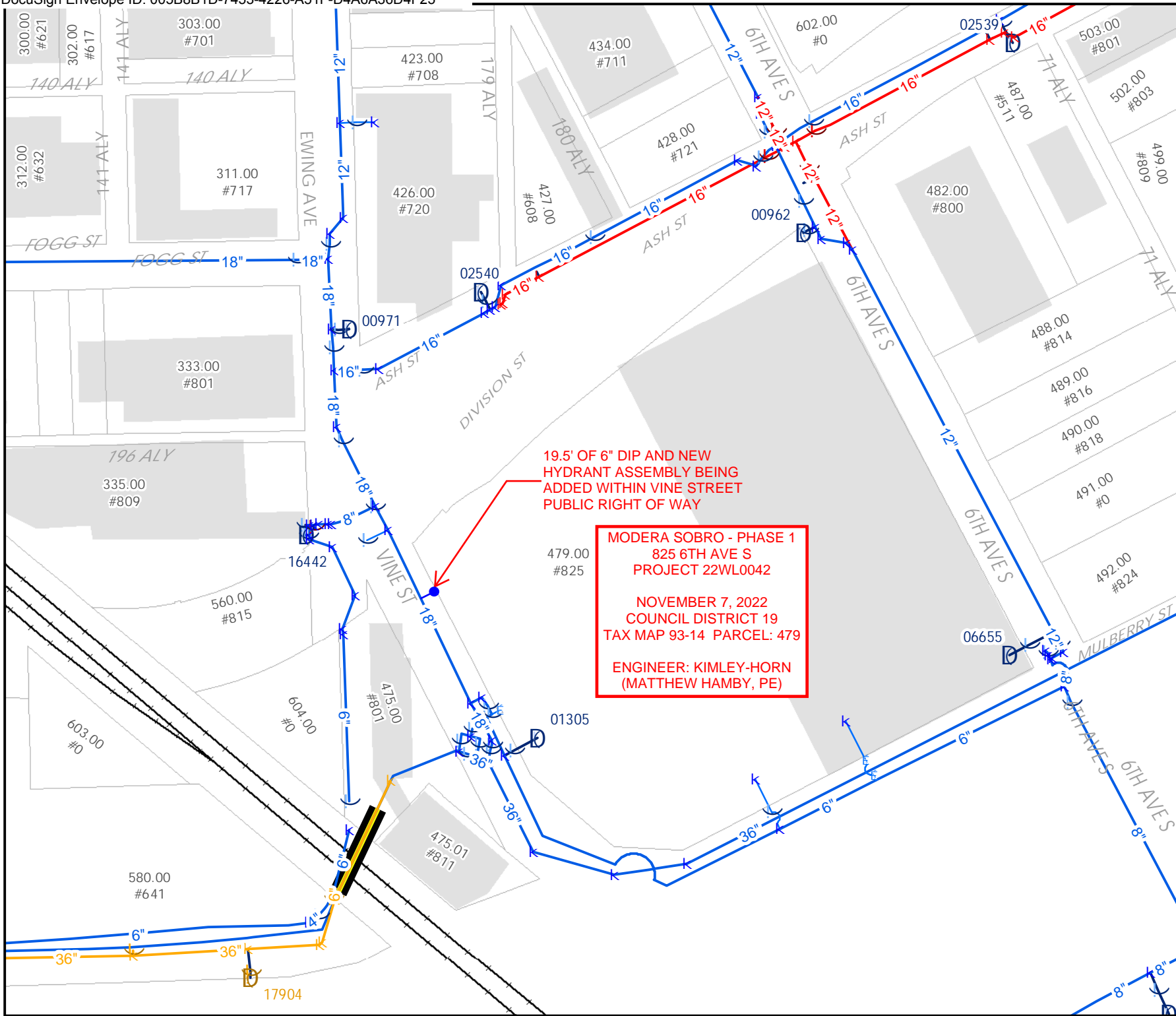
A request for the acceptance of approximately 20 linear feet of six-inch water main (DIP), one fire hydrant assembly, approximately 40 linear feet of sanitary sewer main, and one sanitary sewer manhole to serve the Modera SoBro Phase 1 development.



Not to Scale
Date: 7/26/2021



--- CAUTION ---
THE POSITION OF THE WATER AND SANITARY SEWER MAINS SHOWN ARE APPROXIMATE AND ARE INTENDED TO SHOW THE GENERAL LOCATIONS ONLY. THE SIZES NOTED ARE TO THE BEST OF MWS KNOWLEDGE. IN ALL CASES WHERE PRECISE LOCATION AND MAIN SIZES ARE REQUIRED, FIELD VERIFICATION WILL BE NECESSARY.



19.5' OF 6" DIP AND NEW HYDRANT ASSEMBLY BEING ADDED WITHIN VINE STREET PUBLIC RIGHT OF WAY

MODERA SOBRO - PHASE 1
825 6TH AVE S
PROJECT 22WL0042

NOVEMBER 7, 2022
COUNCIL DISTRICT 19
TAX MAP 93-14 PARCEL: 479

ENGINEER: KIMLEY-HORN
(MATTHEW HAMBY, PE)

Legend

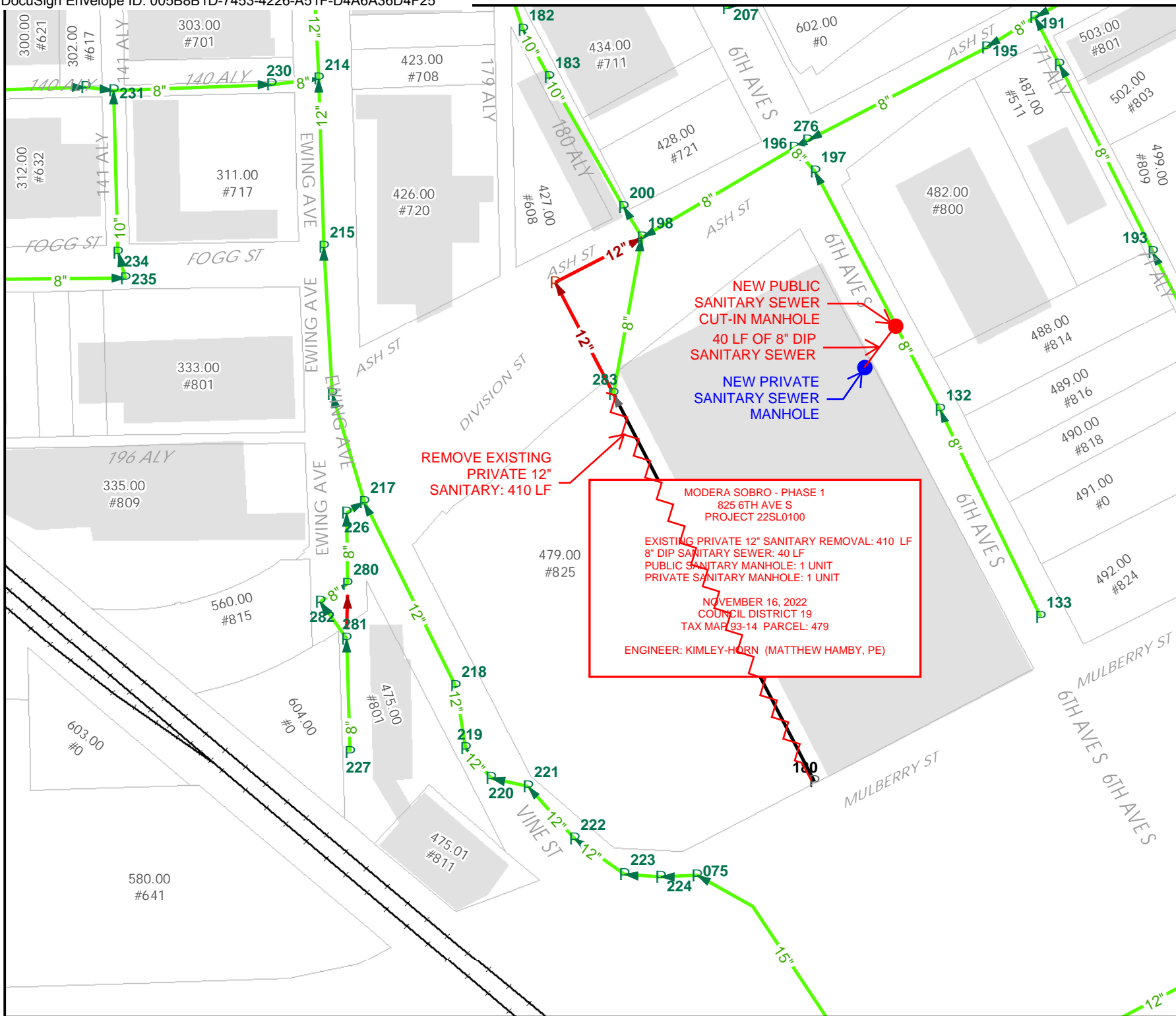
Water Main

- Abandoned
- In Service
- Under Construction
- Railroads

Not to Scale
Date: 7/26/2021



--- CAUTION ---
THE POSITION OF THE WATER AND SANITARY SEWER MAINS SHOWN ARE APPROXIMATE AND ARE INTENDED TO SHOW THE GENERAL LOCATIONS ONLY. THE SIZES NOTED ARE TO THE BEST OF MWS KNOWLEDGE. IN ALL CASES WHERE PRECISE LOCATION AND MAIN SIZES ARE REQUIRED, FIELD VERIFICATION WILL BE NECESSARY.



Legend

Sewer Gravity Main

- Abandoned
- In Service
- Private
- Railroads