



**METROPOLITAN GOVERNMENT OF NASHVILLE
AND DAVIDSON COUNTY**

Metro Office Building
800 President Ronald Reagan Way
P.O. Box 196300
Nashville, TN 37219-6300

October 19, 2022

To: Stephanie James, Metro Water Services

**Re: 101 FACTORY STREET
Planning Commission Mandatory Referral #2022M-158ES-001
Council District #17 Colby Sledge, Council Member**

On behalf of the Metropolitan Planning Commission, the following item, referred to the Commission as required by the Metro Charter, has been recommended for *approval* to the Metropolitan Council:

A request for the acceptance of approximately 26 linear feet of eight-inch water main (DIP) to serve the development at 101 Factory Street.

The relevant Metro agencies (Metro Parks, Metro Public Works, Metro Water Services, Metro Emergency Communications, the Nashville Electric Service, Metro Finance – Public Property and the Metro Historical Commission) have reviewed the proposal and concur in the recommendation for approval. This request must be approved by the Metro Council to become effective. A sketch showing the location of the request is attached to this letter.

Conditions that apply to this approval: none

This recommendation for approval is given as set forth in the Metropolitan Planning Commission Rules and Procedures. If you have any questions about this matter, please contact Delilah Rhodes at delilah.rhodes@nashville.gov or 615-862-7208.

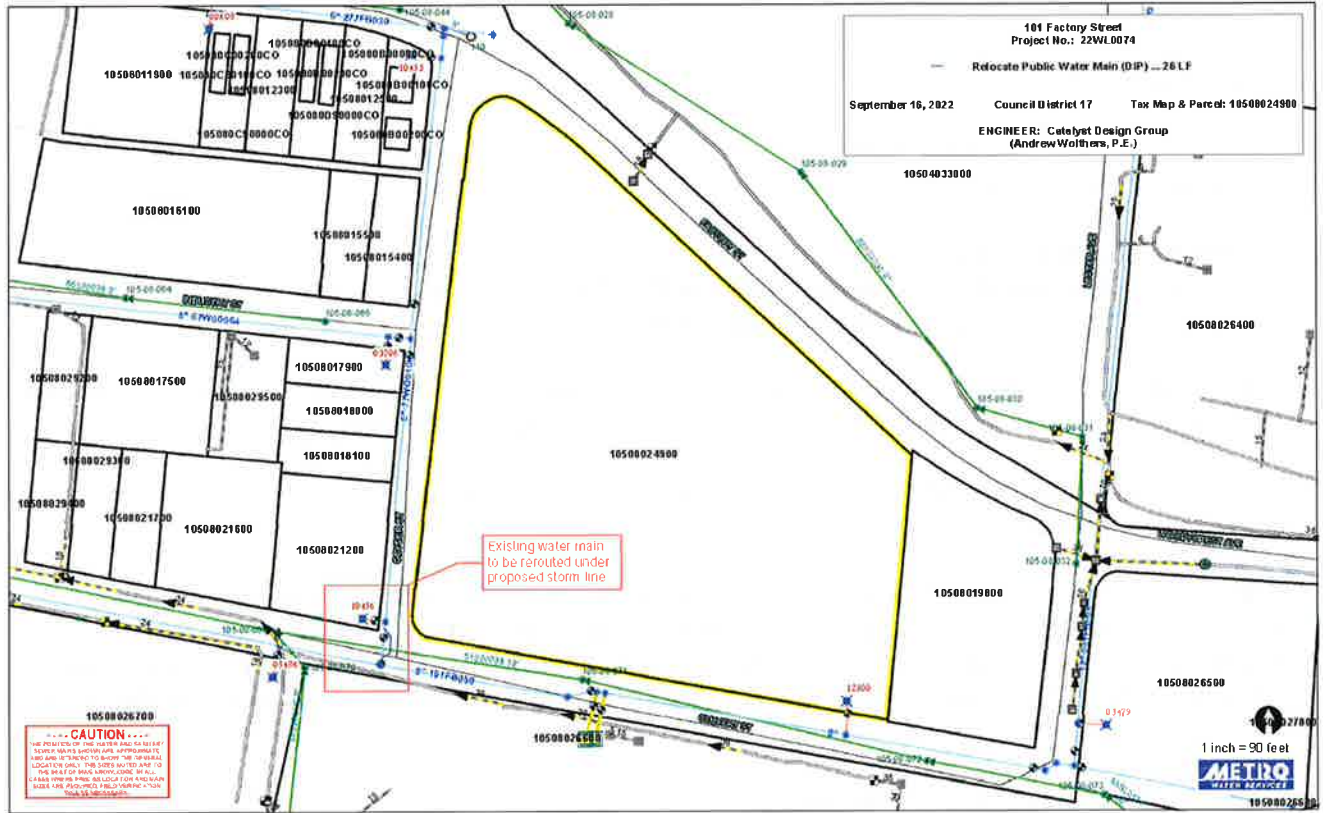
Sincerely,

A handwritten signature in blue ink that reads "Lisa Milligan".

Lisa Milligan
Land Development Manager
Metro Planning Department
cc: *Metro Clerk*

Re: 101 FACTORY STREET
Planning Commission Mandatory Referral #2022M-158ES-001
Council District #17 Colby Sledge, Council Member

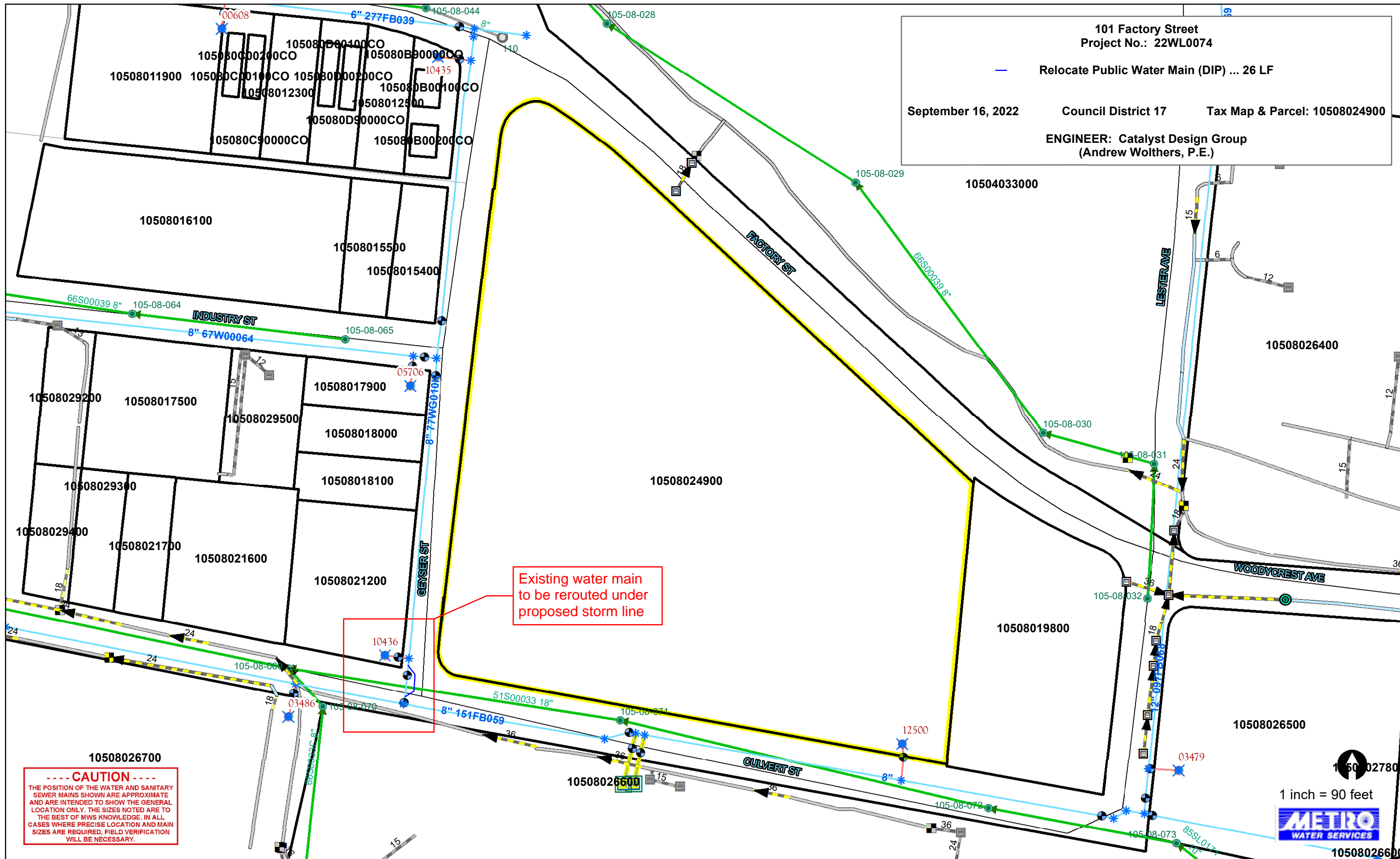
A request for the acceptance of approximately 26 linear feet of eight-inch water main (DIP) to serve the development at 101 Factory Street.



101 Factory Street
Project No.: 22WL0074

September 16, 2022 Council District 17 Tax Map & Parcel: 10508024900

ENGINEER: Catalyst Design Group
(Andrew Wolthers, P.E.)



Existing water main to be rerouted under proposed storm line

----- CAUTION -----
THE POSITION OF THE WATER AND SANITARY SEWER MAINS SHOWN ARE APPROXIMATE AND ARE INTENDED TO SHOW THE GENERAL LOCATION ONLY. THE SIZES NOTED ARE TO THE BEST OF MWS KNOWLEDGE. IN ALL CASES WHERE PRECISE LOCATION AND MAIN SIZES ARE REQUIRED, FIELD VERIFICATION WILL BE NECESSARY.

1 inch = 90 feet

10508027800