



November 7, 2023

To: George Reagan Metro Water Services

Re: **4TH AND MCCANN**
Planning Commission Mandatory Referral 2023M-165ES-001
Council District #17 Terry Vo, Council Member

On behalf of the Metropolitan Planning Commission, the following item, referred to the Commission as required by the Metro Charter, has been recommended for *approval* to the Metropolitan Council:

A request for the abandonment of approximately 222 linear feet of 10-inch public sanitary sewer, two public sanitary sewer manholes, and associated easements for the 4th and McCann development.

The relevant Metro agencies (Metro Parks, Metro Public Works, Metro Water Services, Metro Emergency Communications, the Nashville Electric Service, Metro Finance – Public Property and the Metro Historical Commission) have reviewed the proposal and concur in the recommendation for approval. This request must be approved by the Metro Council to become effective. A sketch showing the location of the request is attached to this letter.

Conditions that apply to this approval: none

This recommendation for approval is given as set forth in the Metropolitan Planning Commission Rules and Procedures. If you have any questions about this matter, please contact Delilah Rhodes at Delilah.Rhodes@nashville.gov or 615-862-7208.

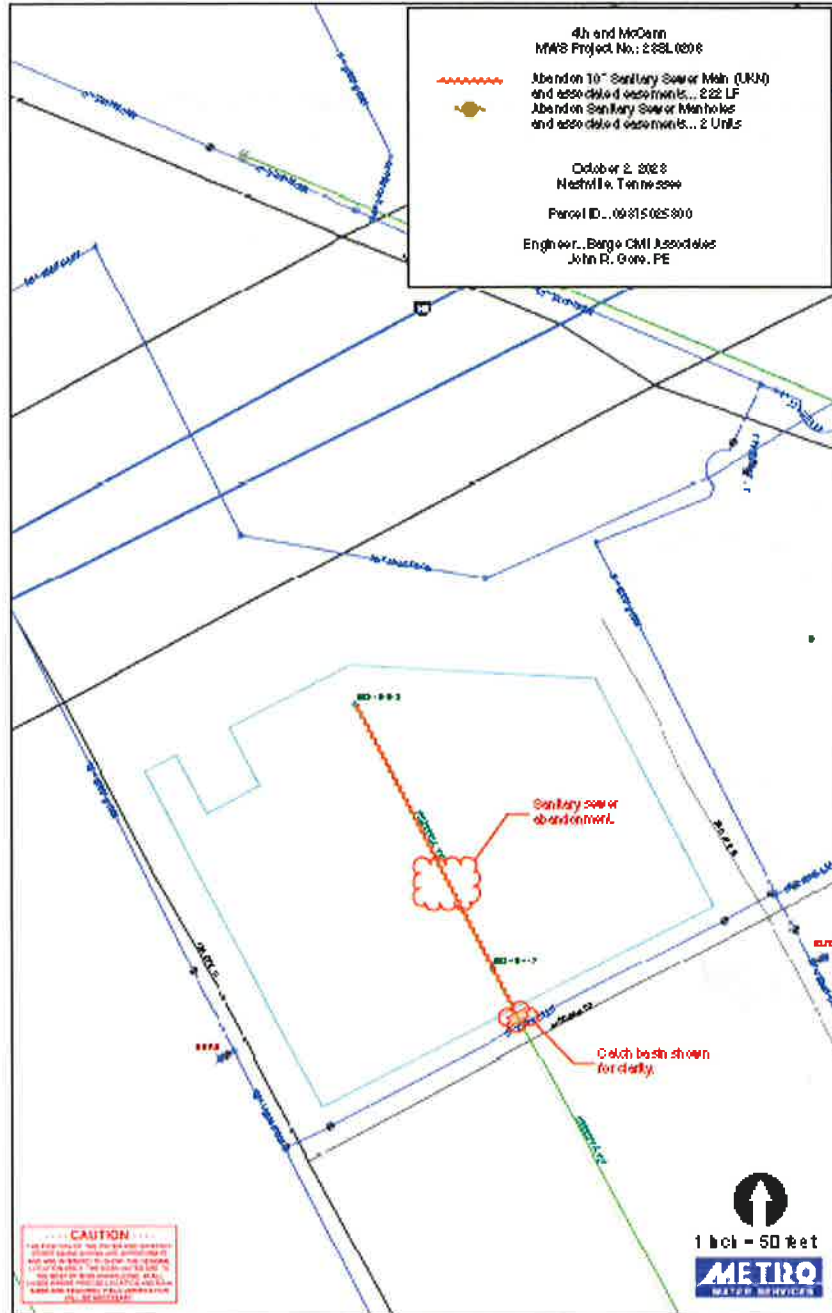
Sincerely,

A handwritten signature in blue ink that reads "Lisa Milligan". The signature is fluid and cursive, written over a light blue horizontal line.

Lisa Milligan
Assistant Director Land Development
Metro Planning Department
cc: *Metro Clerk*

**Re: 4TH AND MCCANN
Planning Commission Mandatory Referral 2023M-165ES-001
Council District #17 Terry Vo, Council Member**

A request for the abandonment of approximately 222 linear feet of 10-inch public sanitary sewer, two public sanitary sewer manholes, and associated easements for the 4th and McCann development.



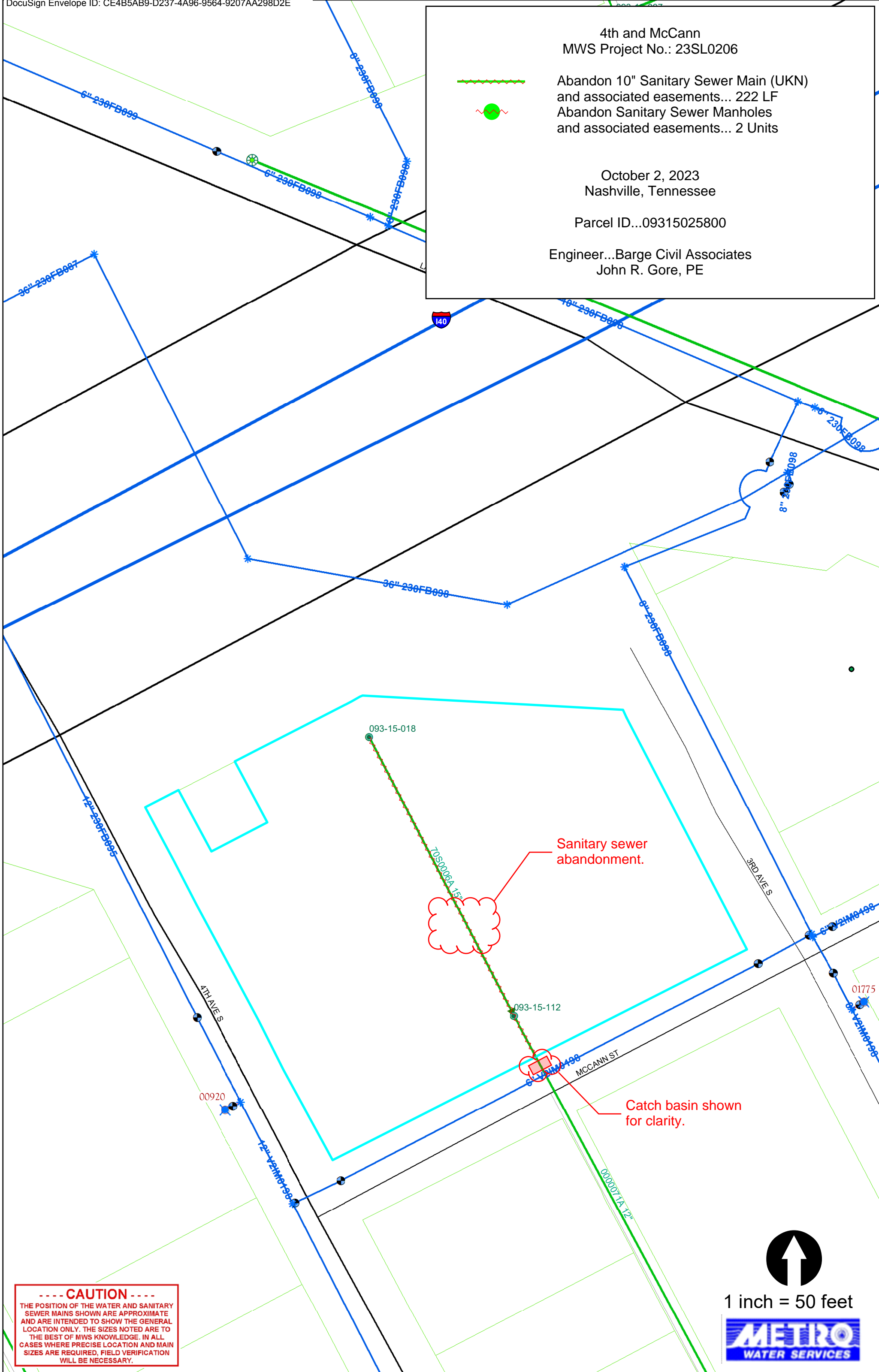
4th and McCann
MWS Project No.: 23SL0206

Abandon 10" Sanitary Sewer Main (UKN)
and associated easements... 222 LF
Abandon Sanitary Sewer Manholes
and associated easements... 2 Units

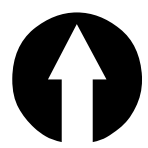
October 2, 2023
Nashville, Tennessee

Parcel ID...09315025800

Engineer...Barge Civil Associates
John R. Gore, PE



----- CAUTION -----
THE POSITION OF THE WATER AND SANITARY SEWER MAINS SHOWN ARE APPROXIMATE AND ARE INTENDED TO SHOW THE GENERAL LOCATION ONLY. THE SIZES NOTED ARE TO THE BEST OF MWS KNOWLEDGE. IN ALL CASES WHERE PRECISE LOCATION AND MAIN SIZES ARE REQUIRED, FIELD VERIFICATION WILL BE NECESSARY.



1 inch = 50 feet

