








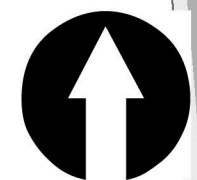
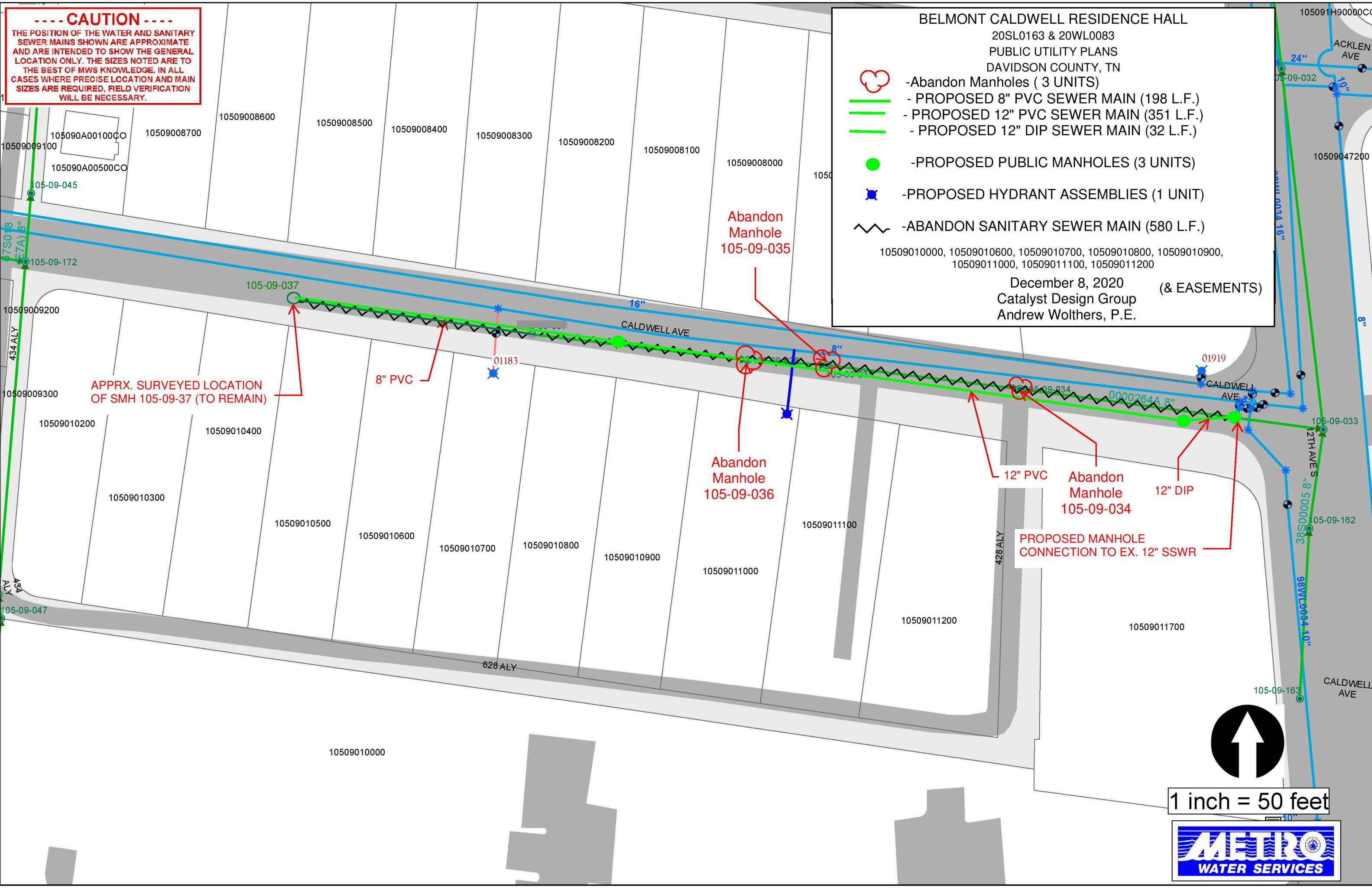
----- CAUTION -----
 THE POSITION OF THE WATER AND SANITARY SEWER MAINS SHOWN ARE APPROXIMATE AND ARE INTENDED TO SHOW THE GENERAL LOCATION ONLY. THE SIZES NOTED ARE TO THE BEST OF MWS KNOWLEDGE. IN ALL CASES WHERE PRECISE LOCATION AND MAIN SIZES ARE REQUIRED, FIELD VERIFICATION WILL BE NECESSARY.

BELMONT CALDWELL RESIDENCE HALL
 20SL0163 & 20WL0083
 PUBLIC UTILITY PLANS
 DAVIDSON COUNTY, TN

-  - Abandon Manholes (3 UNITS)
-  - PROPOSED 8" PVC SEWER MAIN (198 L.F.)
-  - PROPOSED 12" PVC SEWER MAIN (351 L.F.)
-  - PROPOSED 12" DIP SEWER MAIN (32 L.F.)
-  - PROPOSED PUBLIC MANHOLES (3 UNITS)
-  - PROPOSED HYDRANT ASSEMBLIES (1 UNIT)
-  - ABANDON SANITARY SEWER MAIN (580 L.F.)

10509010000, 10509010600, 10509010700, 10509010800, 10509010900, 10509011000, 10509011100, 10509011200

December 8, 2020 (& EASEMENTS)
 Catalyst Design Group
 Andrew Wolthers, P.E.



1 inch = 50 feet

